

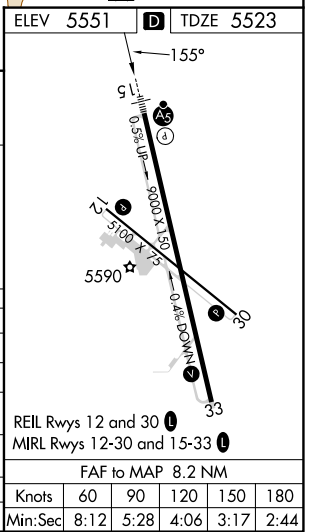
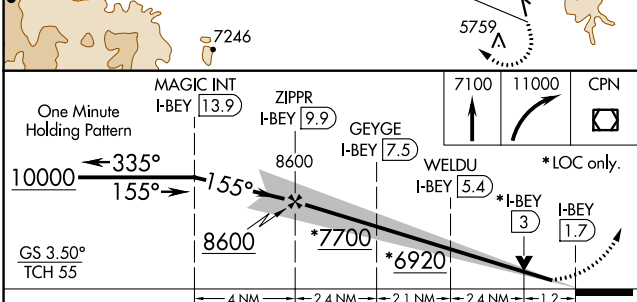
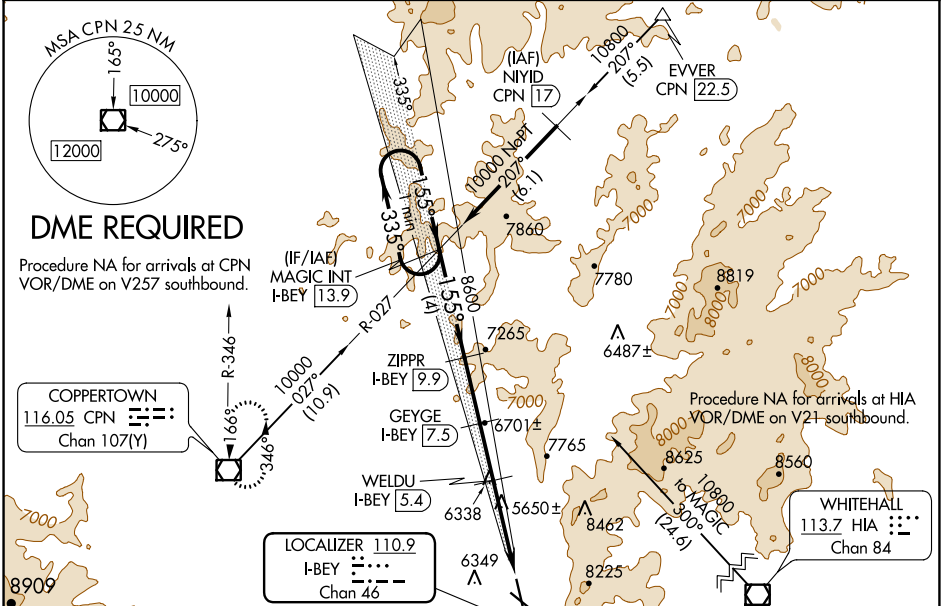
LOC/DME I-BEY 110.9 Chan 46	APP CRS 155°	Rwy Idg TDZE Apt Elev	9000 5523 5551
---	------------------------	-----------------------------	---

ILS or LOC RWY 15

BERT MOONEY (BTM)

<p>NA Circling NA northeast of Rwy 15-33. DME required. S-ILS 15 for inop ALS, increase all Cats visibility to 2½ SM. #S-ILS 15 for inop ALS, increase Cat C/D visibility to 1 SM. #S-LOC 15 for inop ALS, increase Cat C/D visibility to 1½ SM.</p>	<p>MALSR</p>	<p>MISSED APPROACH: (Do not exceed 190K until 7100) Climb to 7100 then climbing right turn to 11000 direct CPN VOR/DME and hold, continue climb-in-hold to 11000. #Missed approach requires minimum climb of 365 feet per NM to 8700s.</p>
---	---------------------	---

ASOS 135.175	SALT LAKE CENTER 132.4 338.3	UNICOM 123.0 (CTAF) 0
------------------------	--	---------------------------------



CATEGORY	A	B	C	D
S-ILS 15#	5778-½	255 (300-½)	5848-½	325 (300-½)
S-ILS 15	6280-1⅞ 757 (800-1⅞)			
S-LOC 15	6500-¾ 977 (1000-¾)	6500-1 977 (1000-1)	6500-2½	977 (1000-2½)
C CIRCLING	6660-1¼ 1109 (1200-1¼)	6660-1½ 1109 (1200-1½)	7060-3 1509 (1600-3)	7120-3 1569 (1600-3)
WELDU FIX MINIMUMS				
S-LOC 15#	6020-½	497 (500-½)	6020-1	497 (500-1)

REIL Rwy 12 and 30 MRL Rwy 12-30 and 15-33	FAC TO MAP 8.2 NM
Knots	60 90 120 150 180
Min:Sec	8:12 5:28 4:06 3:17 2:44

NW-1, 22 FEB 2024 to 21 MAR 2024

NW-1, 22 FEB 2024 to 21 MAR 2024