

# RNAV (GPS) RWY 9

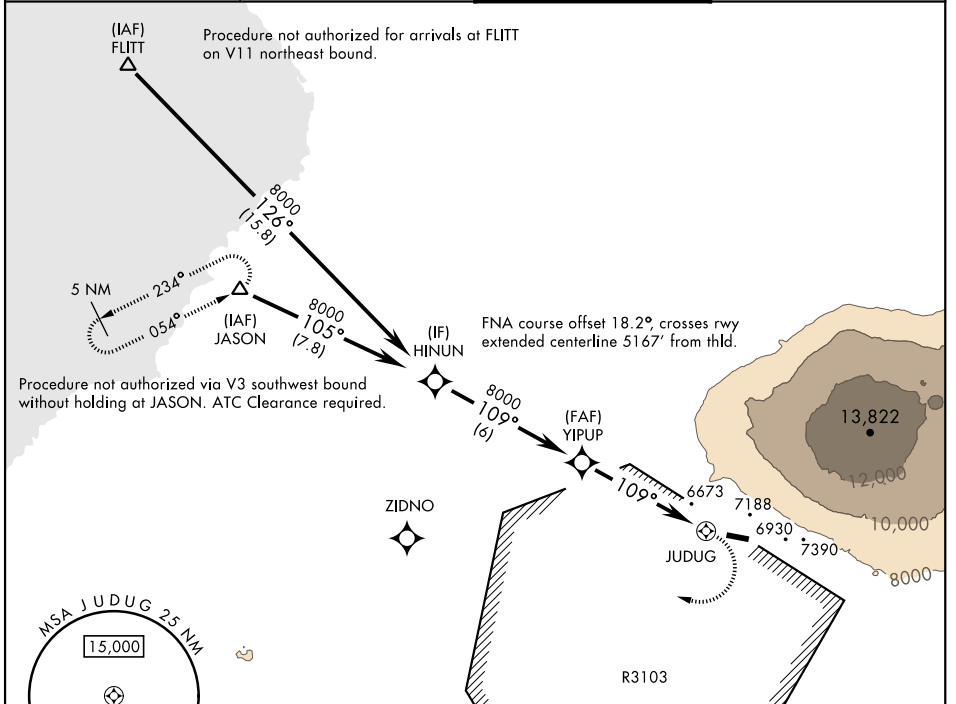
APCH CRS	Rwy Idg	3696
109°	TDZE	6168
	Arpt Elev	6190

AL-17449 [USA]

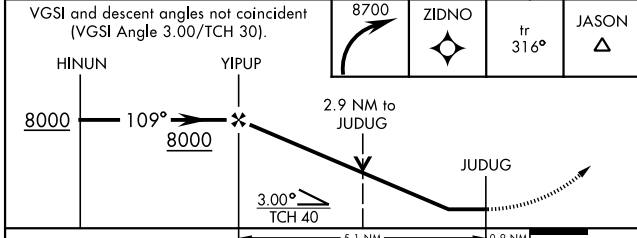
BRADSHAW AAF (PHSF)

RNP APCH - GFS	<ul style="list-style-type: none"> <li>* Circling not authorized at night.</li> <li>* Circling not authorized N of Rwy 09-27.</li> </ul>	MISSED APPROACH: Climbing right turn to 8700 direct ZIDNO and on track 316° to JASON and hold.
	<ul style="list-style-type: none"> <li>⚠ NA Helicopter visibility reduction below ¾ SM not authorized.</li> </ul>	

ATIS ★ <b>124.7 293.225</b>	HONOLULU CENTER ★ <b>118.45 278.3</b>	TOWER ★ <b>119.275 (CTAF) 236.6</b>	GND CON ★ <b>121.7 0 226.675</b>
--------------------------------	--	--	-------------------------------------

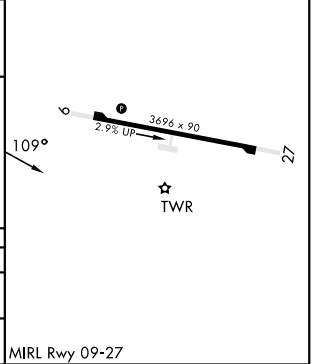


VGSI and descent angles not coincident (VGSI Angle 3.00/TCH 30).	8700	ZIDNO	tr 316°	JASON
--	------	-------	---------	-------



CATEGORY	A	B	C	D
LNAV MDA	7300-1¼ 1132 (1200-1¼)	7300-1½ 1132 (1200-1½)	7300-3 1132 (1200-3)	NOT AUTHORIZED
CIRCLING*	7300-1¼ 1110 (1200-1¼)	7700-1½ 1510 (1600-1½)	NOT AUTHORIZED	

ELEV 6190	TDZE 6168
-----------	-----------



# RNAV (GPS) RWY 9

PAC, 25 JAN 2024 to 21 MAR 2024

PAC, 25 JAN 2024 to 21 MAR 2024