

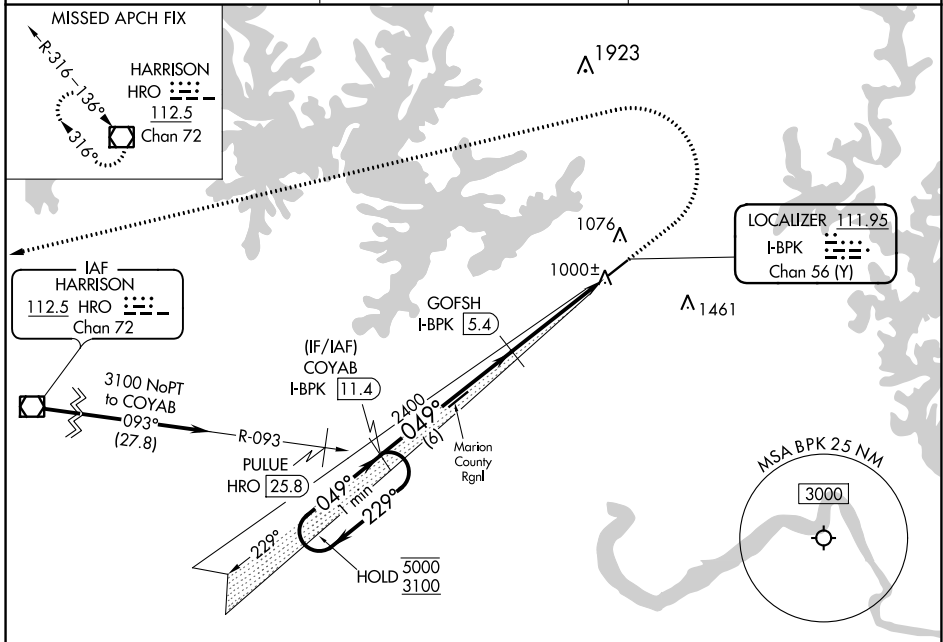
LOC/DME I-BPK 111.95 Chan 56(Y)	APP CRS 049°	Rwy Idg TDZE 928 Apt Elev 928
--	------------------------	---

ILS or LOC RWY 5

BAXTER COUNTY (BPK)

DME required.	MISSED APPROACH: Climb to 1800 then climbing left turn to 3500 direct HRO VOR/DME and hold.
<p>▼ Circling NA for Cat C, southeast of Rwy 5-23.</p> <p>▲ NA Circling to Rwy 23 NA at night.</p>	

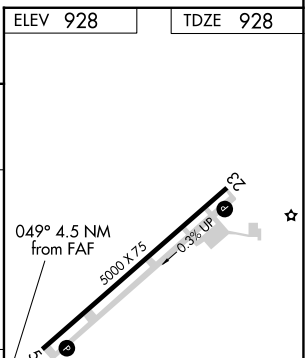
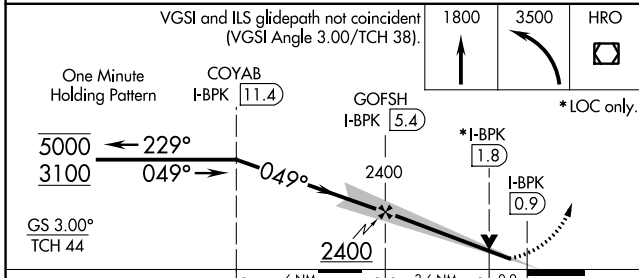
ASOS 133.975	MEMPHIS CENTER 126.85 281.55	UNICOM 123.0 (CTAF) 0
------------------------	--	--



SC-1, 22 FEB 2024 to 21 MAR 2024

SC-1, 22 FEB 2024 to 21 MAR 2024

ELEV 928	TDZE 928
----------	----------



CATEGORY	A	B	C	D
S-ILS 5	1178-3/4	250 (300-3/4)		NA
S-LOC 5	1260-1	332 (400-1)		NA
CIRCLING	1380-1 452 (500-1)	1400-1 472 (500-1)	1420-1 1/2 492 (500-1 1/2)	NA

REIL Rwy 5 and 23 **0**

MIRL Rwy 5-23 **0**