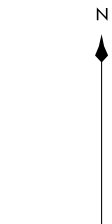


D-ATIS  
135.0  
BOSTON APP CON  
120.6 263.1

**ROBUC THREE ARRIVAL (RNAV) Transition Routes**  
(ROBUC.ROBUC3) 120CTT7

BOSTON, MASSACHUSETTS  
GENERAL EDWARD LAWRENCE LOGAN INTL (BOS)



**KENNEDY**  
JFK

17000  
\*1700  
063°  
(20)

NEWES

17000  
\*1700  
063°  
(32)

MERIT

17000  
\*2600  
097°  
(42)

17000  
\*2600  
078°  
(36)

FEXXX  
FL230

RUIZE  
FL230  
FL210

17000  
\*2600  
079°  
(11)

AWLIN  
17000

10 NM

(6)  
14000  
\*1900  
083°

BANKI  
16000

11000  
\*1900  
083°  
(14)

ROBUC  
FL190 260K  
12000

See following  
page for  
Arrival Routes.

- NOTE: RADAR required.
- NOTE: RNAV 1.
- NOTE: DME/DME/IRU or GPS required.
- NOTE: Turbojet aircraft only.
- NOTE: RUIZE transition assigned by ATC only.

KENNEDY TRANSITION (JFK.ROBUC3)  
MERIT TRANSITION (MERIT.ROBUC3)  
RUIZE TRANSITION (RUIZE.ROBUC3)

(CONTINUED ON FOLLOWING PAGE)

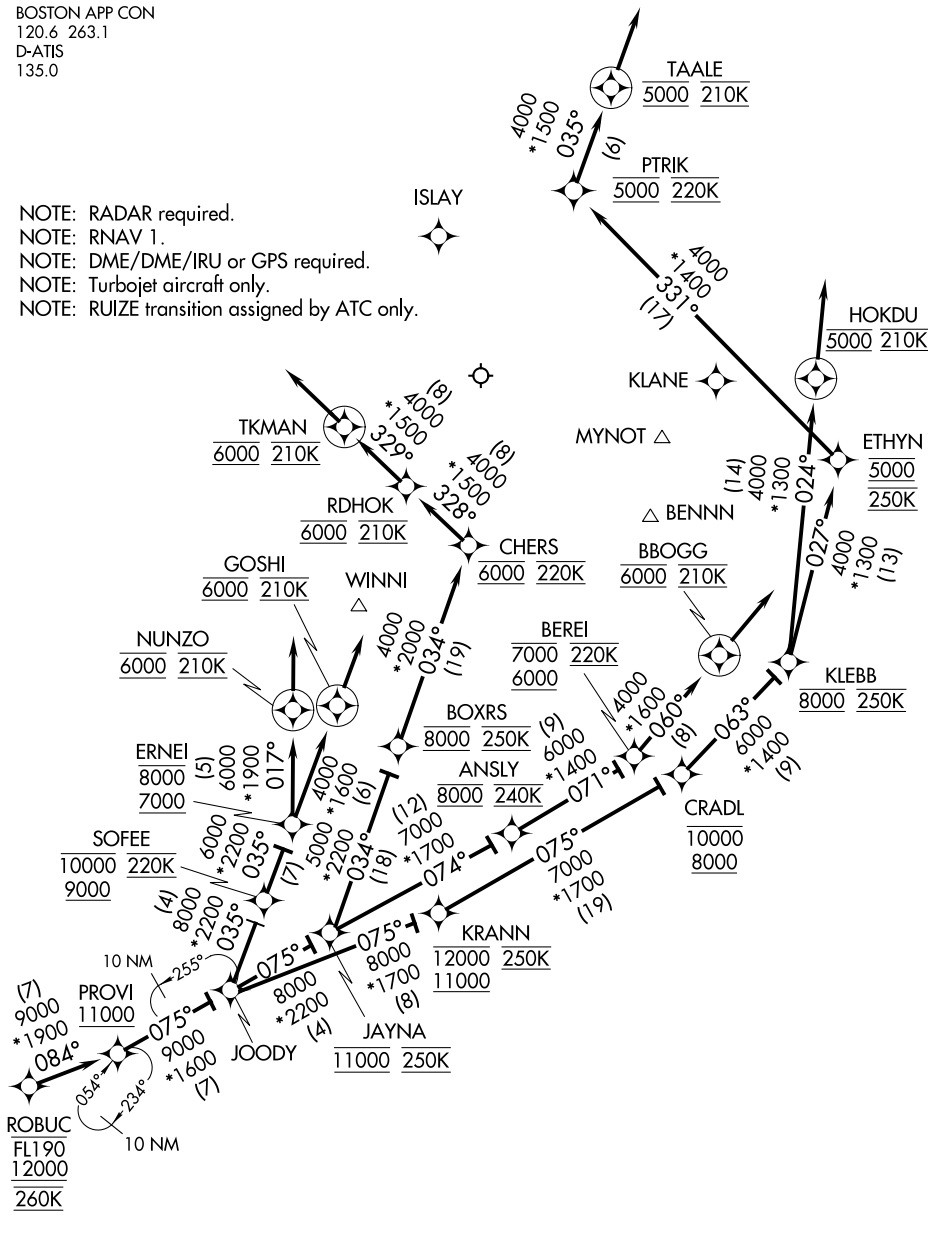
NOTE: Chart not to scale.

(ROBUC.ROBUC3) 17285  
**ROBUC THREE ARRIVAL (RNAV) Transition Routes**  
AL-58 (FAA)  
GENERAL EDWARD LAWRENCE LOGAN INTL (BOS)  
BOSTON, MASSACHUSETTS

ROBUC THREE ARRIVAL (RNAV) Arrival Routes

BOSTON APP CON  
120.6 263.1  
D-ATIS  
135.0

- NOTE: RADAR required.
- NOTE: RNAV 1.
- NOTE: DME/DME/IRU or GPS required.
- NOTE: Turbojet aircraft only.
- NOTE: RUIZE transition assigned by ATC only.



NE-1, 22 FEB 2024 to 21 MAR 2024

NE-1, 22 FEB 2024 to 21 MAR 2024

NOTE: Chart not to scale.

(NARRATIVE ON FOLLOWING PAGE)

ROBUC THREE ARRIVAL (RNAV) Arrival Routes