

(KLSHN1.KLSHN) 23166

KLSHN ONE DEPARTURE (RNAV)

AL-45 (FAA)

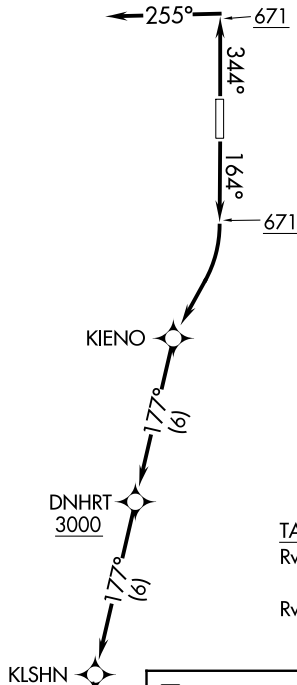
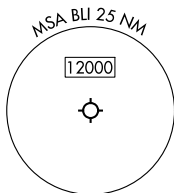
BELLINGHAM INTL (BLI)
BELLINGHAM, WASHINGTON

**TOP ALTITUDE:
ASSIGNED BY ATC**

RNAV 1 - DME/DME/IRU or GPS

RADAR required

VICTORIA TERMINAL DEP CON
132.7 290.8
ATIS
134.45
GND CON
127.4 379.3
BELLINGHAM TOWER ★
124.9 379.3



TAKEOFF MINIMUMS

Rwy 16: Standard with minimum climb of 245' per NM to 2300.
Rwy 34: Standard.

NOTE: Chart not to scale.



DEPARTURE ROUTE DESCRIPTION

TAKEOFF RUNWAY 16: Climb on heading 164° to 671, then right turn direct KIENO, then on track 177° to cross DNHRT at or above 3000, thence. . . .

TAKEOFF RUNWAY 34: Climb on heading 344° to 671, then on heading 255° or as assigned by ATC, for vectors to cross DNHRT at or above 3000, thence. . . .

. . . .on track 177° to KLSHN, then on (transition). Maintain ATC assigned altitude. Expect filed altitude within 5 minutes after departure.

LOST COMMUNICATIONS: If no transmissions are received for 2 minutes after departure, proceed direct DNHRT, then on last routing cleared.

PENN COVE TRANSITION (KLSHN1.CVV)

PENN COVE
CVV

BUHNR

NW-1, 22 FEB 2024 to 21 MAR 2024

NW-1, 22 FEB 2024 to 21 MAR 2024

KLSHN ONE DEPARTURE (RNAV)

(KLSHN1.KLSHN) 15JUN23

BELLINGHAM, WASHINGTON
BELLINGHAM INTL (BLI)