

# RNAV (GPS) RWY 22

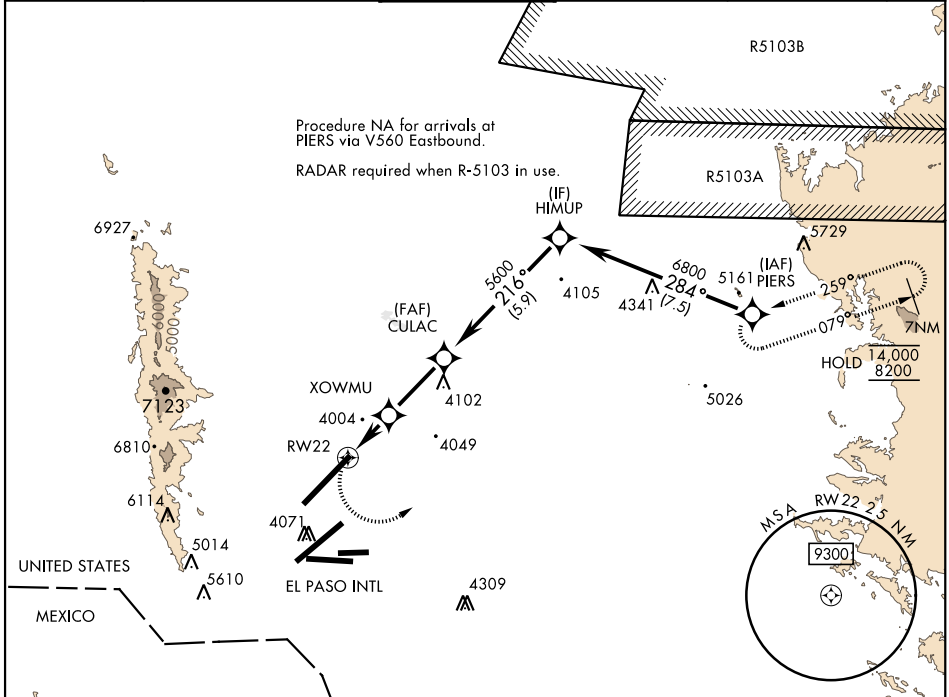
APCH CRS	Rwy Idg	13.554
216°	TDZE	3947
	Arprt Elev	3947

[USA]

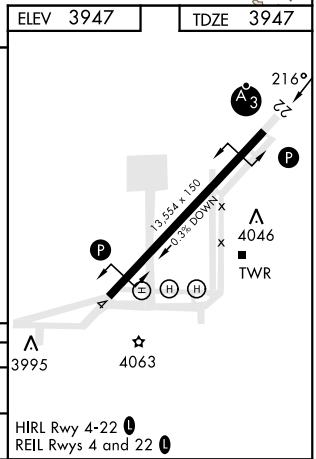
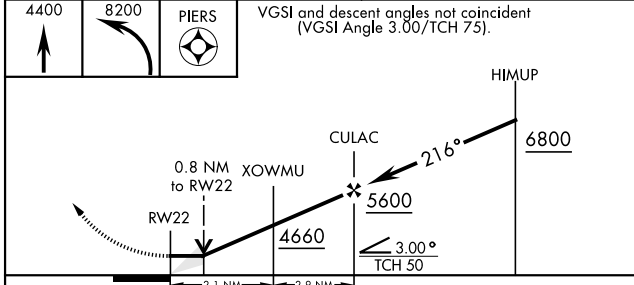
BIGGS AAF (KBIF)

RNP APCH	SSALR 	MISSED APPROACH: Climb to 4400 then climbing left turn to 8200 direct PIERS and hold, continue climb-in-hold to 8200.
<p>▼ * When ALS inop, increase CAT AB vis to 1 mile, CAT CD vis to ½ mile.</p> <p>** Circling not authorized for CAT D West of Rwy 4-22.</p>		

ATIS	EL PASO APP CON	TOWER *	GND CON	EL PASO CLNC DEL	ASR
120.0 254.3	119.15 353.5 S of V16 124.25 298.85 N of V16	127.9 0 342.25	121.6 251.125	125.0 379.1	



ELEV 3947	TDZE 3947
-----------	-----------



CATEGORY	A	B	C	D
LNNAV MDA *	4260-¾	313	(400-¾)	
CIRCLING **	4400-1 453 (500-1)	4540-1½ 593 (600-1½)	4540-2 593 (600-2)	

HIRL Rwy 4-22	4063
REL Rws 4 and 22	4063

# RNAV (GPS) RWY 22

SC-3, 22 FEB 2024 to 21 MAR 2024

SC-3, 22 FEB 2024 to 21 MAR 2024