

| | | |
|--|------------------------|--|
| VORTAC LTS 109.8 Chan 35 | APP CRS 122° | Rwy Idg N/A TDZE N/A Apt Elev 1433 |
|--|------------------------|--|

VOR-A

ALTUS/QUARTZ MOUNTAIN RGNL (A.X.S)

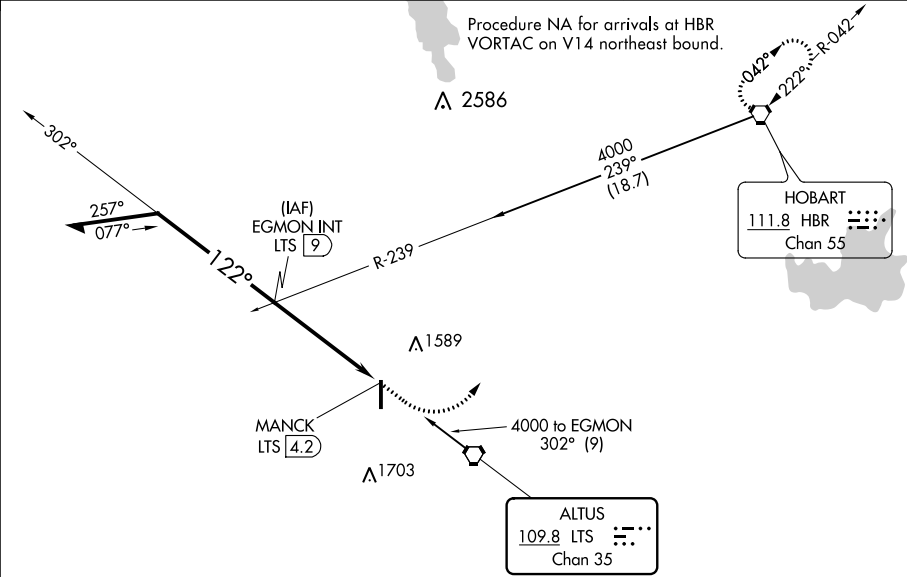
⚠ When local altimeter setting not received, use Hobart Rgnl altimeter setting and increase all MDA 80 feet. Increase Circling Cat C visibility ¼ mile.

MISSED APPROACH: Climb to 2500 then climbing left turn to 4000 direct HBR VORTAC and hold.

AWOS-3PT
118.825

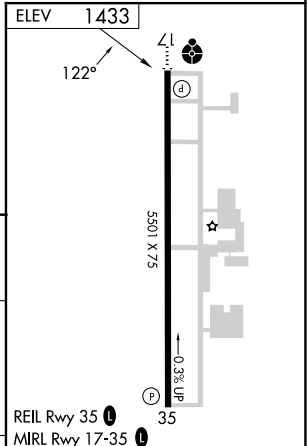
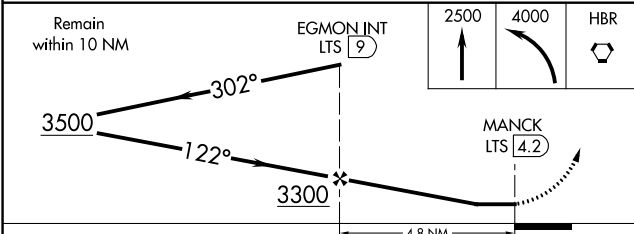
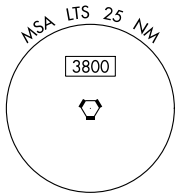
ALTUS APP CON*
125.1 353.7

UNICOM
122.8 (CTAF) 0



SC-1, 22 FEB 2024 to 21 MAR 2024

SC-1, 22 FEB 2024 to 21 MAR 2024



| | | | | | | | | | | |
|-------------------|--------|-------------|-------------------------|----|-------------------|------|------|------|------|------|
| CATEGORY | A | B | C | D | FAF to MAP 4.8 NM | | | | | |
| C CIRCLING | 1920-1 | 487 (500-1) | 2020-1½ 587 (600-1½) | NA | Knots | 60 | 90 | 120 | 150 | 180 |
| | | | | | Min:Sec | 4:48 | 3:12 | 2:24 | 1:55 | 1:36 |