

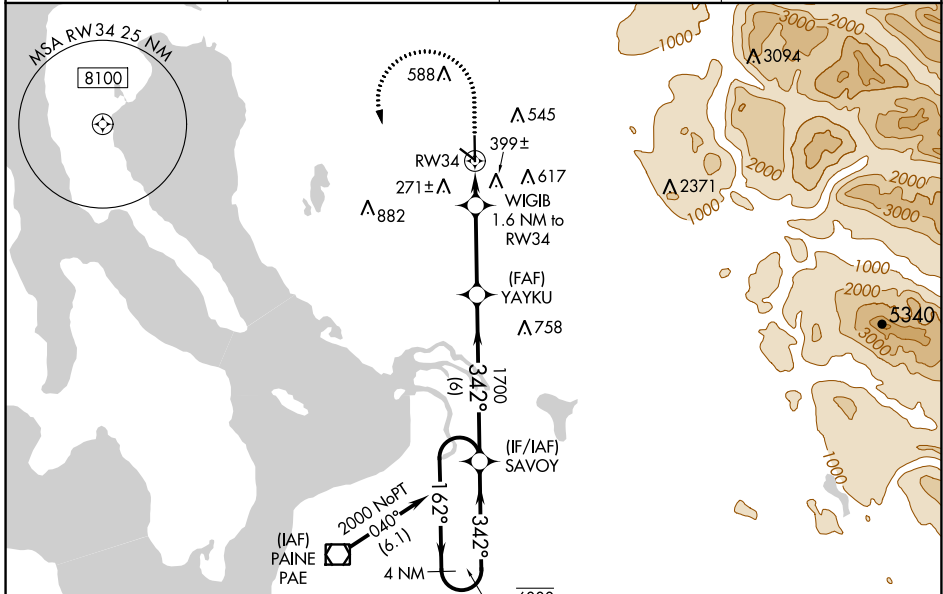
WAAS CH <b>90324</b> <b>W34A</b>	APP CRS <b>342°</b>	Rwy Idg TDZE <b>135</b> Apt Elev <b>142</b>	<b>5332</b>
--	------------------------	---	-------------

# RNAV (GPS) RWY 34

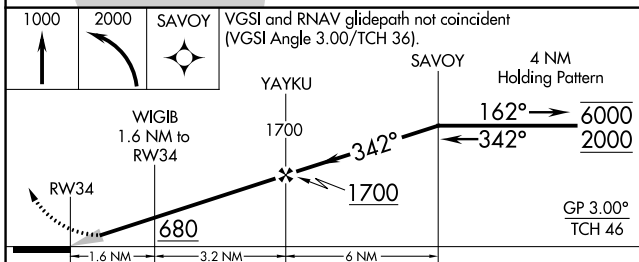
ARLINGTON MUNI (A WO)

RNP APCH-GPS.	MALS	MISSED APPROACH: Climb to 1000 then climbing left turn to 2000 direct SAVOY and hold.
<p><b>⚠</b> Inop table does not apply to LPV. For uncompensated Baro-VNAV systems, LNAV/VNAV NA below -15°C or above 54°C. For inop ALS, increase LNAV/VNAV all Cats visibility to 1½ SM and LNAV Cat C and D visibility to 1½ SM.</p>		

AWOS-3PT <b>135.625</b>	SEATTLE APP CON <b>128.5 306.9</b>	CLNC DEL <b>121.725</b>	CTAF <b>122.725</b>
----------------------------	---------------------------------------	----------------------------	------------------------

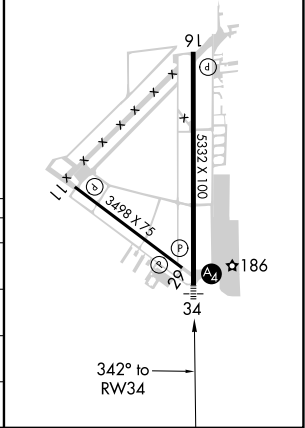


Procedure NA for arrival on PAE VOR/DME airway radials 298 CW 329, and on T268 westbound.



ELEV 142	TDZE 135
----------	----------

MIRL Rwy 16-34  
REIL Rwy 16  
REIL Rws 11 and 29



CATEGORY	A	B	C	D
LPV DA		335-¾	200 (200-¾)	
LNAV/VNAV DA		510-¾	375 (400-¾)	
LNAV MDA	540-¾	405 (400-¾)	540-1	405 (400-1)
CIRCLING	840-1 698 (700-1)	900-1 758 (800-1)	1000-2½ 858 (900-2½)	1040-3 898 (900-3)

NW-1, 22 FEB 2024 to 21 MAR 2024

NW-1, 22 FEB 2024 to 21 MAR 2024