

AUSTIN SIX DEPARTURE

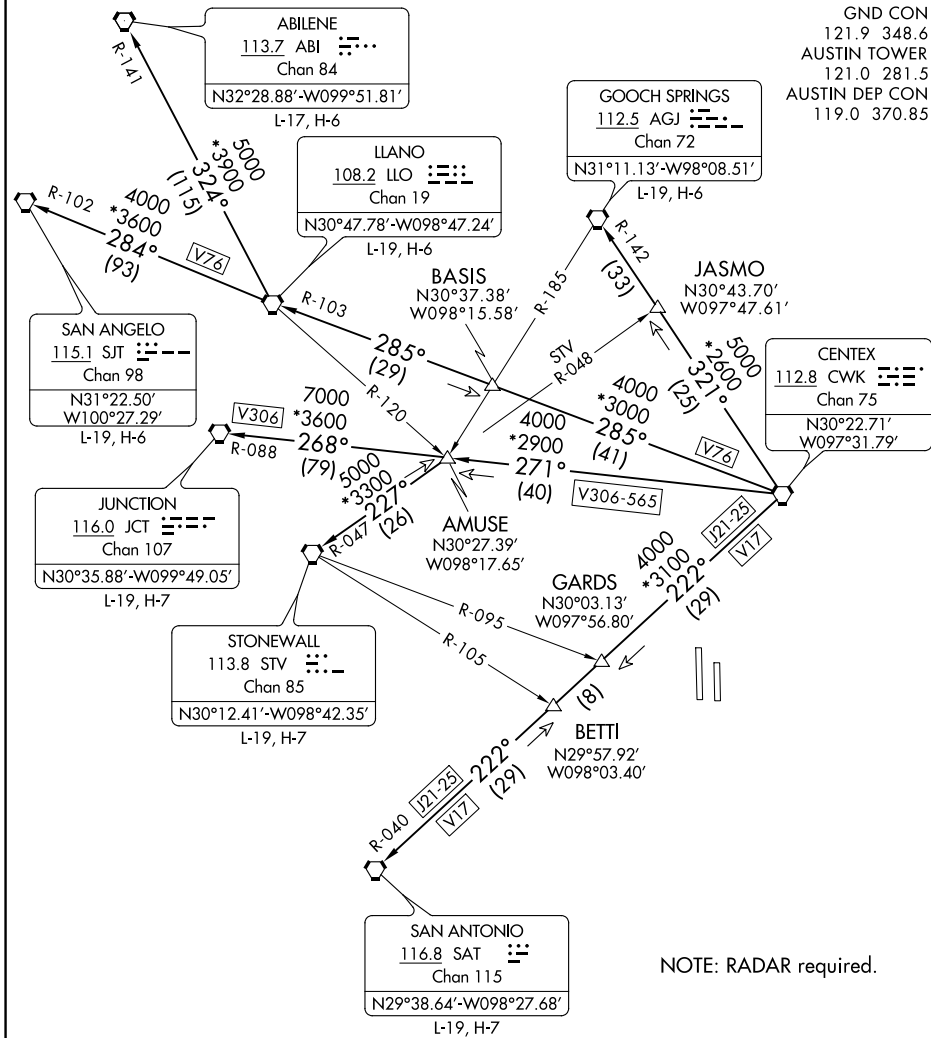
AL-556 (FAA)

AUSTIN-BERGSTROM INTL (AUS)

AUSTIN, TEXAS

**TOP ALTITUDE:
ASSIGNED BY ATC**

D-ATIS
124.4
CLNC DEL
125.5 263.0
CPDLC
GND CON
121.9 348.6
AUSTIN TOWER
121.0 281.5
AUSTIN DEP CON
119.0 370.85



SC-3, 22 FEB 2024 to 21 MAR 2024

SC-3, 22 FEB 2024 to 21 MAR 2024

TAKEOFF MINIMUMS

Rwys 18L/R: Standard.

Rwys 36L/R: Standard with minimum climb of 240' per NM to 2600.

(NARRATIVE ON FOLLOWING PAGE)

NOTE: Chart not to scale.

AUSTIN SIX DEPARTURE

AUSTIN, TEXAS

AUSTIN-BERGSTROM INTL (AUS)



DEPARTURE ROUTE DESCRIPTION

TAKEOFF RUNWAYS 18L/R, 36L/R: Climb on assigned heading for vectors, then on assigned transition. Maintain altitude assigned by ATC, expect filed altitude 10 minutes after departure.

ABILENE TRANSITION (AUS6.ABI): From over CWK VORTAC on CWK R-285 and LLO R-103 to LLO VORTAC, then on LLO R-324 and ABI R-141 to ABI VORTAC.

GOOCH SPRINGS TRANSITION (AUS6.AGJ): From over CWK VORTAC on CWK R-321 and AGJ R-142 to AGJ VORTAC.

JUNCTION TRANSITION (AUS6.JCT): From over CWK VORTAC on CWK R-271 and JCT R-088 to JCT VORTAC.

LLANO TRANSITION (AUS6.LLO): From over CWK VORTAC on CWK R-285 and LLO R-103 to LLO VORTAC.

SAN ANGELO TRANSITION (AUS6.SJT): From over CWK VORTAC on CWK R-285 and LLO R-103 to LLO VORTAC, then on LLO R-284 and SJT R-102 to SJT VORTAC.

SAN ANTONIO TRANSITION (AUS6.SAT): From over CWK VORTAC on CWK R-222 and SAT R-040 to SAT VORTAC.

STONEWALL TRANSITION (AUS6.STV): From over CWK VORTAC on CWK R-271 and STV R-047 to STV VORTAC.

SC-3, 22 FEB 2024 to 21 MAR 2024

SC-3, 22 FEB 2024 to 21 MAR 2024