

LOC/DME I-PKU 111.75 Chan 54(Y)	APP CRS 275°	Rwy ldg TDZE 998 Apt Elev 1026
---	------------------------	--

ILS or LOC RWY 28

HARTSFIELD-JACKSON ATLANTA INTL (ATL)

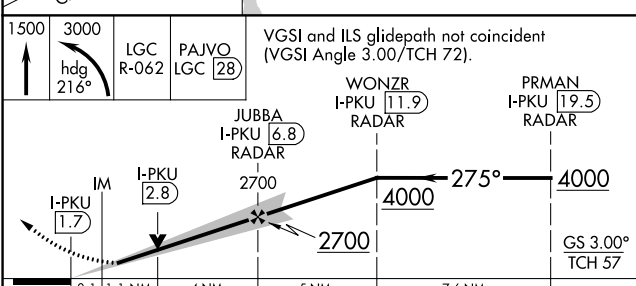
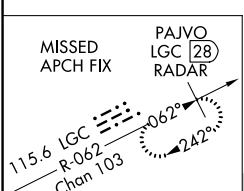
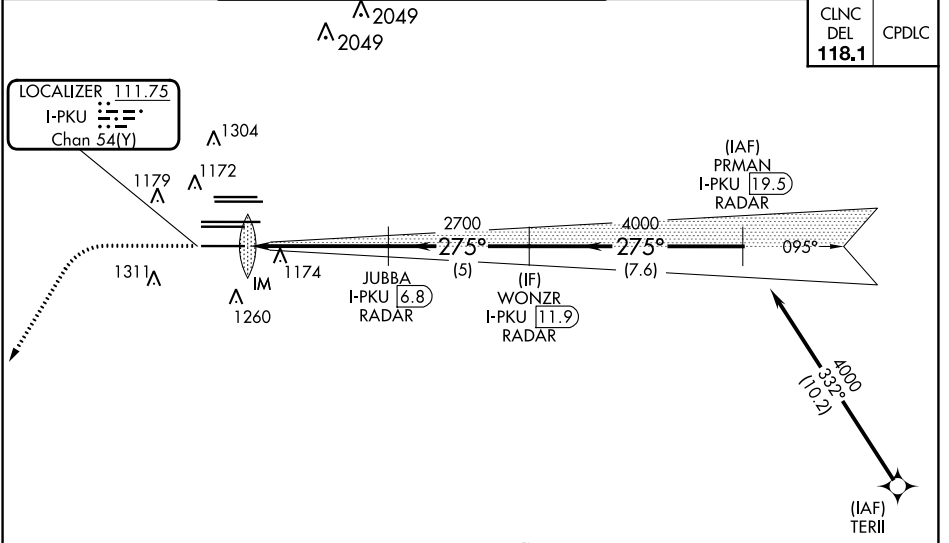
RNAV 1-GPS or RADAR required for procedure entry.
From TERII: RNAV 1-GPS required. DME or RADAR required.

ALSIF-2

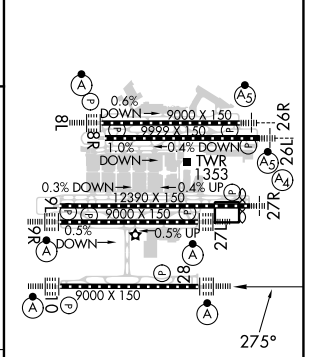
MISSED APPROACH: Climb to 1500 then climbing left turn to 3000 on heading 216° and LGC VORTAC R-062 to PAJVO/LGC 28 DME/RADAR and hold.

Simultaneous approach authorized.

D-ATIS ARR 119.65	ATLANTA APP CON APP CON	ATLANTA TOWER				ALL RWYS	GND CON	ALL RWYS
DEP 125.55	127.9 379.9	8L-26R	8R-26L	9L-27R	9R-27L	10-28	(8L-26R,8R-26L) (9L-27R,9R-27L)	10-28
		119.1	125.325	123.85	119.3	119.5	121.9	121.75
						254.4	121.65	254.4



ELEV 1026	TDZE 998
-----------	----------



CATEGORY	A	B	C	D
S-ILS 28	1198/18		200 (200-1/2)	
S-LOC 28	1440/24	442 (500-1/2)	1440/45	442 (500-7/8)

HIRL all Rwys					
TDZ/CL Rwys 8L, 9R, 10, 26R, 27L and 28					
FAF to MAP 5.2 NM					
Knots	60	90	120	150	180
Min:Sec	5:12	3:28	2:36	2:05	1:44

SE-4, 22 FEB 2024 to 21 MAR 2024

SE-4, 22 FEB 2024 to 21 MAR 2024