

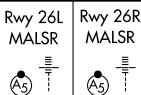
LOC/DME I-BRU <b>108.7</b> Chan 24	APP CRS <b>275°</b>	Rwy Idg TDZE Apt Elev	26L <b>9999</b> <b>996</b> <b>1026</b>	26R <b>8500</b> <b>990</b> <b>1026</b>
--	------------------------	-----------------------------	---	---

# ILS or LOC RWY 26L

HARTSFIELD-JACKSON ATLANTA INTL (ATL)

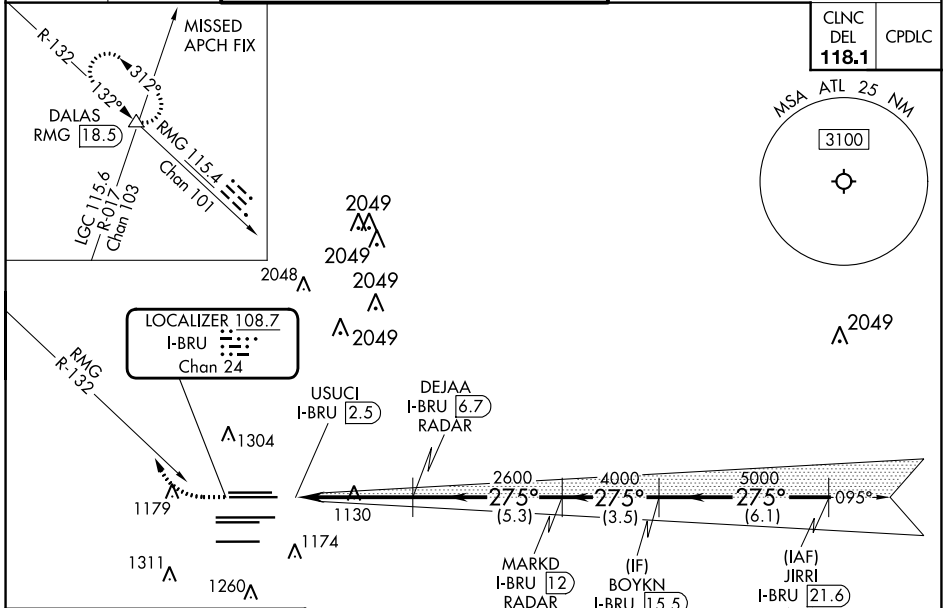
RADAR required.

▼ Inop table does not apply to sidestep Rwy 26R Cats A and B. For inop ALS, increase S-ILS 26L all Cats visibility to RVR 4500 and S-LOC 26L Cat E visibility to RVR 6000. For inop ALS to Rwy 26R, increase sidestep 26R Cat E visibility to 2 SM. Simultaneous approach authorized.

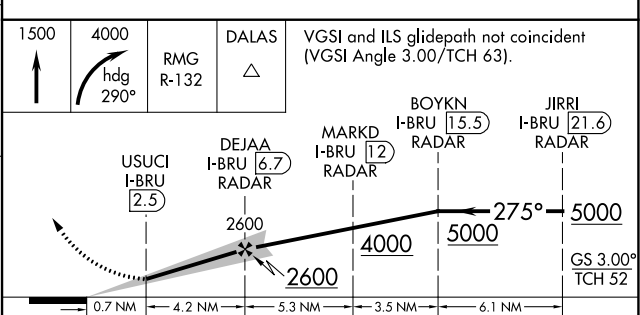
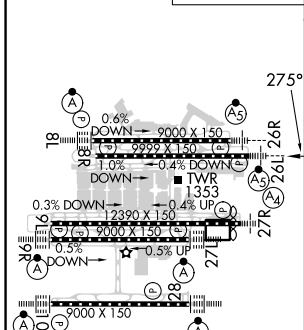


MISSED APPROACH: Climb to 1500 then climbing right turn to 4000 on heading 290° and RMG R-132 to DALAS INT/RMG VORTAC 18.5 DME and hold.

D-ATIS ARR <b>119.65</b>	ATLANTA APP CON DEP <b>127.9 379.9</b>	ATLANTA TOWER 8L-26R 8R-26L 9L-27R 9R-27L 10-28 RWYS <b>119.1 125.325 123.85 119.3 119.5 254.4</b>				ALL RWYS <b>121.9</b>	GND CON (8L-26R,8R-26L) (9L-27R,9R-27L) 10-28 <b>121.75 121.65 254.4</b>	ALL RWYS <b>121.65 254.4</b>
-----------------------------	--	--	--	--	--	-----------------------------	--	------------------------------------



ELEV 1026	<b>D</b> TDZE 26L 996 TDZE 26R 990
-----------	---------------------------------------



FAF to MAP 4.2 NM	HIRL all Rws TDZ/CL Rws 8L, 9R, 10, 26R, 27L and 28				
Knots	60	90	120	150	180
Min:Sec	4:12	2:48	2:06	1:41	1:24
CATEGORY	A	B	C	D	E
S-ILS 26L	1280/24 284 (300-1/2)				
S-LOC 26L	1380/24	384 (400-1/2)	1380/35	384 (400-3/8)	
SIDESTEP 26R	1380/55 390 (400-1)			1380-1 1/2 390 (400-1 1/2)	

SE-4, 22 FEB 2024 to 21 MAR 2024

SE-4, 22 FEB 2024 to 21 MAR 2024