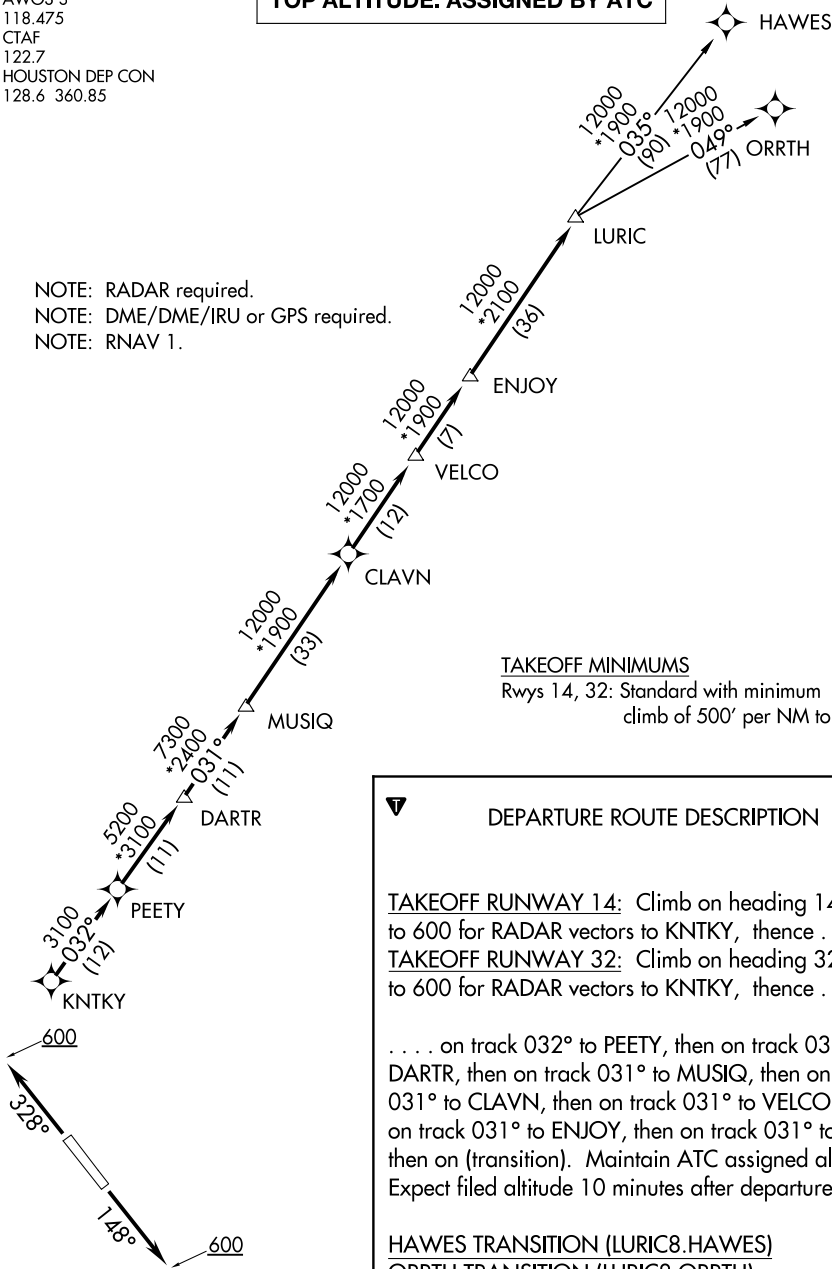


AWOS-3
118.475
CTAF
122.7
HOUSTON DEP CON
128.6 360.85

TOP ALTITUDE: ASSIGNED BY ATC

NOTE: RADAR required.
NOTE: DME/DME/IRU or GPS required.
NOTE: RNAV 1.



TAKEOFF MINIMUMS
Rwys 14, 32: Standard with minimum
climb of 500' per NM to 600.

DEPARTURE ROUTE DESCRIPTION

TAKEOFF RUNWAY 14: Climb on heading 148° to 600 for RADAR vectors to KNTKY, then
TAKEOFF RUNWAY 32: Climb on heading 328° to 600 for RADAR vectors to KNTKY, then
. . . . on track 032° to PEETY, then on track 032° to DARTR, then on track 031° to MUSIQ, then on track 031° to CLAVN, then on track 031° to VELCO, then on track 031° to ENJOY, then on track 031° to LURIC, then on (transition). Maintain ATC assigned altitude. Expect filed altitude 10 minutes after departure.

HAWES TRANSITION (LURIC8.HAWES)
ORRTH TRANSITION (LURIC8.ORRTH)

NOTE: Chart not to scale.