

WAAS CH 78131 W16A	APP CRS 164°	Rwy Idg TDZE 1206 Apt Elev 1206
----------------------------------------	------------------------	-----------------------------------------------------

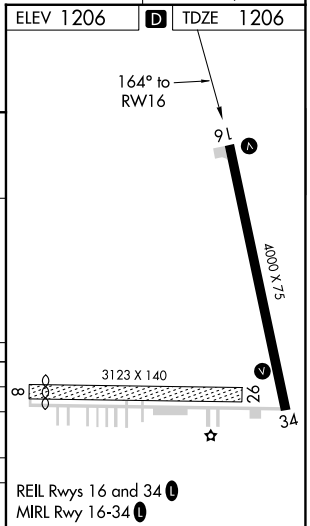
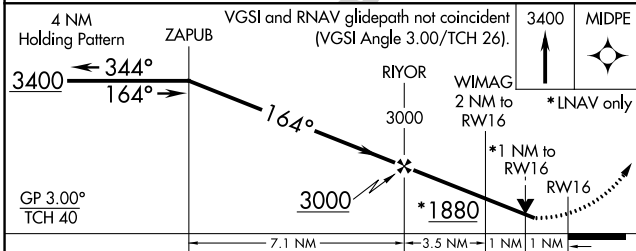
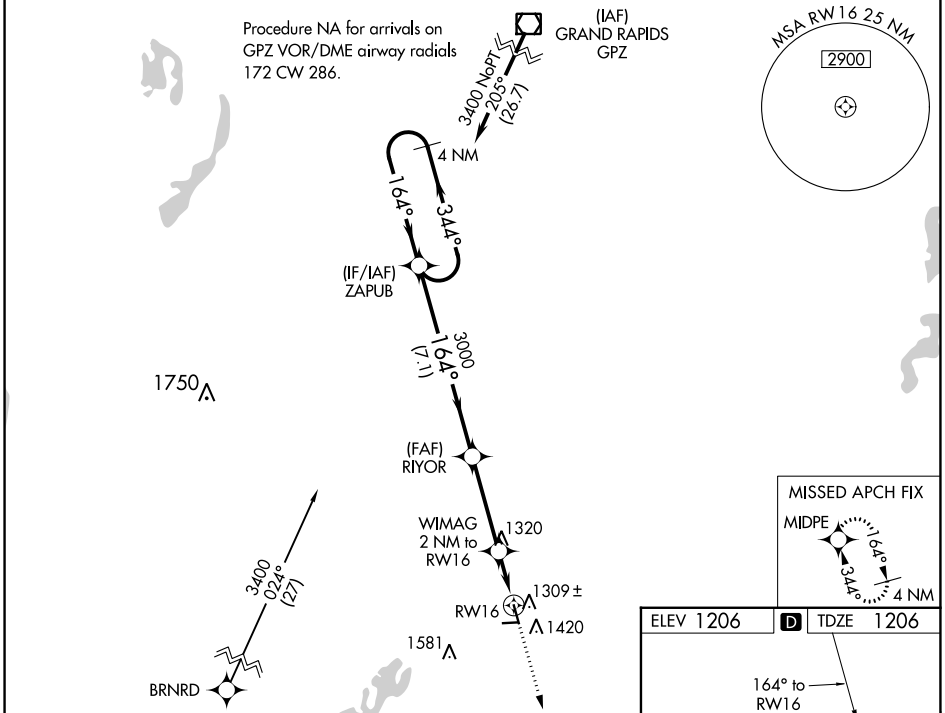
RNAV (GPS) RWY 16

AITKIN MUNI/STEVE KURTZ FLD (AIT)

⚠ For uncompensated Baro-VNAV systems, LNAV/VNAV NA below -17°C (2°F) or above 54°C (130°F).
⚠ Baro-VNAV and VDP NA when using Mc Gregor altimeter setting. DME/DME RNP-0.3 NA. When local altimeter setting not received; use Mc Gregor altimeter setting and increase all DA and MDA 40 feet; increase LPV all Cats visibilities ¼ SM, LNAV/VNAV all Cats and LNAV Cat C visibilities ½ SM. Circling NA to Rwys 8 and 26. Rwy 16 helicopter visibility reduction below ¾ SM NA.

MISSED APPROACH:
Climb to 3400 direct MIDPE and hold.

AWOS-3 118.675	MINNEAPOLIS CENTER 118.05 239.0	UNICOM 123.05 (CTAF) 0
--------------------------	-------------------------------------------	----------------------------------



CATEGORY	A	B	C	D
LPV DA	1518-1	312 (400-1)		NA
LNAV/VNAV DA	1607-1 ¾	401 (500-1 ¾)		NA
LNAV MDA	1560-1	354 (400-1)		NA
CIRCLING	1780-1 574 (600-1)		1900-2 694 (700-2)	NA

NC-1, 22 FEB 2024 to 21 MAR 2024

NC-1, 22 FEB 2024 to 21 MAR 2024