

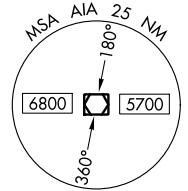
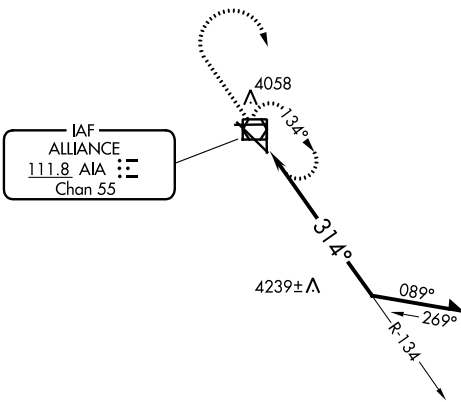
VOR/DME AIA 111.8 Chan 55	APP CRS 314°	Rwy Idg 9202 TDZE 3927 Apt Elev 3931
---	------------------------	---

VOR RWY 30

ALLIANCE MUNI (AIA)

▲ For inop ALS, increase S-30 Cats A/B visibility to 1 SM and S-30 Cats C/D visibility to 1 1/4 SM.	MALS 	MISSED APPROACH: Climb to 5700 then right turn direct AIA VOR/DME and hold.

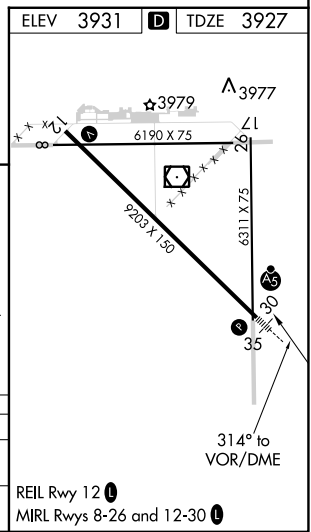
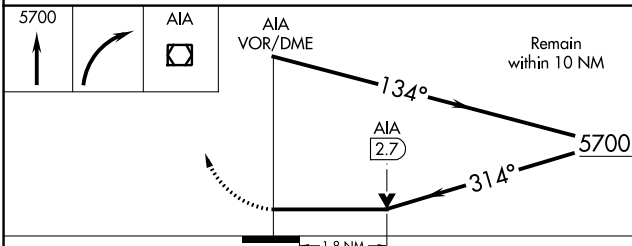
ASOS 135.075	DENVER CENTER 127.95 338.2	UNICOM 123.0 (CTAF) l
------------------------	--------------------------------------	--



▲ 5749

NC-2, 22 FEB 2024 to 21 MAR 2024

NC-2, 22 FEB 2024 to 21 MAR 2024



CATEGORY	A	B	C	D
S-30	4540-3/4 613 (700-3/4)		4540-1 1/8 613 (700-1 1/8)	4540-1 1/2 613 (700-1 1/2)
CIRCLING	4540-1 609 (700-1)		4580-1 3/4 649 (700-1 3/4)	4640-2 1/4 709 (800-2 1/4)