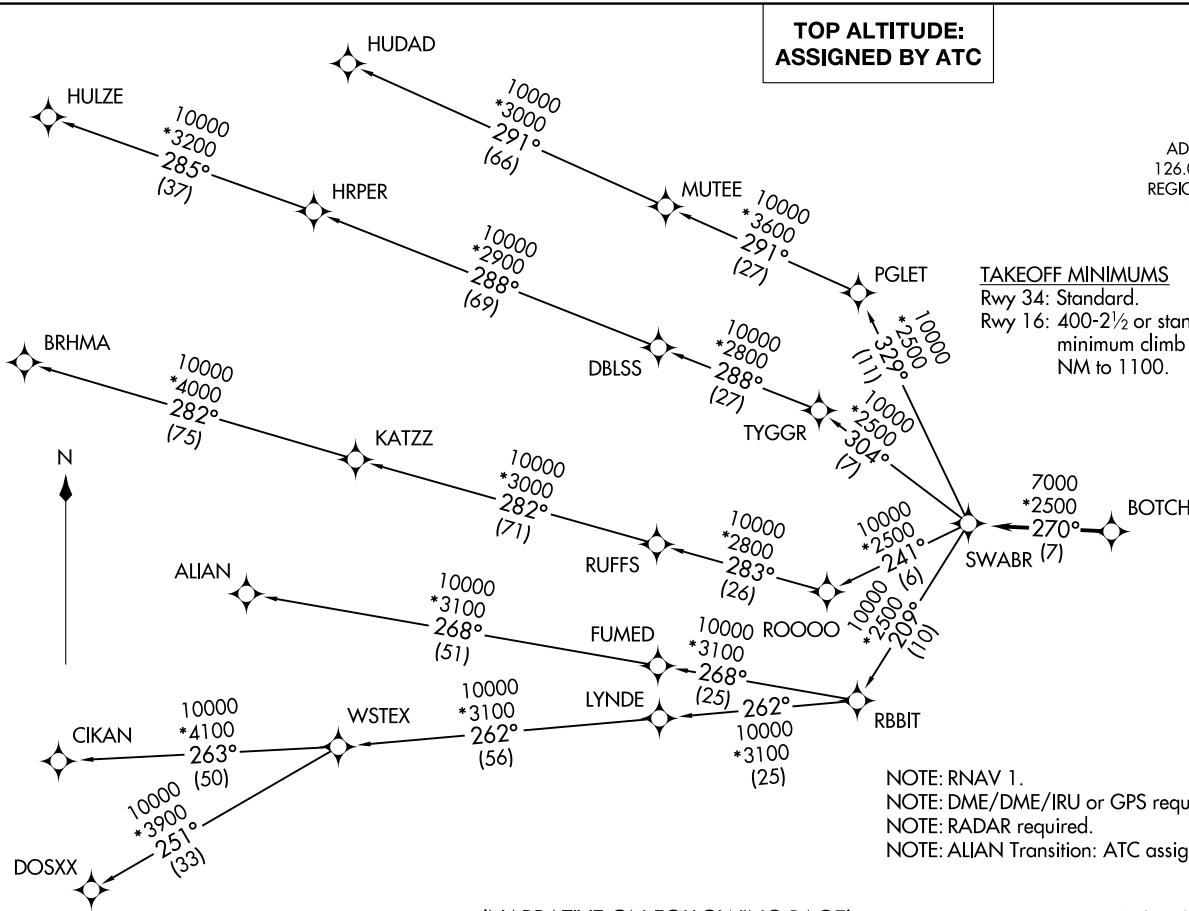


**TOP ALTITUDE:
ASSIGNED BY ATC**

ATIS 133.4
CLNC DEL 119.55
GND CON 121.6
ADDISON TOWER* 126.0 (CTAF) 239.0
REGIONAL DEP CON 124.3 282.275

TAKEOFF MINIMUMS

Rwy 34: Standard.
Rwy 16: 400-2½ or standard with minimum climb of 325' per NM to 1100.



(SWABR1 .SWABR) 22083
AL-788 (FAA)

ADDISON (ADS)
DALLAS, TEXAS

(NARRATIVE ON FOLLOWING PAGE)

NOTE: Chart not to scale.

SWABR ONE DEPARTURE (RNAV)
(SWABR1 .SWABR) 24MAR22

DALLAS, TEXAS
ADDISON (ADS)

SWABR ONE DEPARTURE (RNAV)



DEPARTURE ROUTE DESCRIPTION

When entering controlled airspace, fly heading assigned by ATC, expect vectors to BOTCH, then on track 270° to SWABR, then on assigned transition. Maintain ATC assigned altitude, expect filed altitude 10 minutes after departure.

- ALIAN TRANSITION (SWABR1.ALIAN)
- BRHMA TRANSITION (SWABR1.BRHMA)
- CIKAN TRANSITION (SWABR1.CIKAN)
- DOSXX TRANSITION (SWABR1.DOSXX)
- HUDAD TRANSITION (SWABR1.HUDAD)
- HULZE TRANSITION (SWABR1.HULZE)
- WSTEX TRANSITION (SWABR1.WSTEX)

SC-2, 22 FEB 2024 to 21 MAR 2024

SC-2, 22 FEB 2024 to 21 MAR 2024