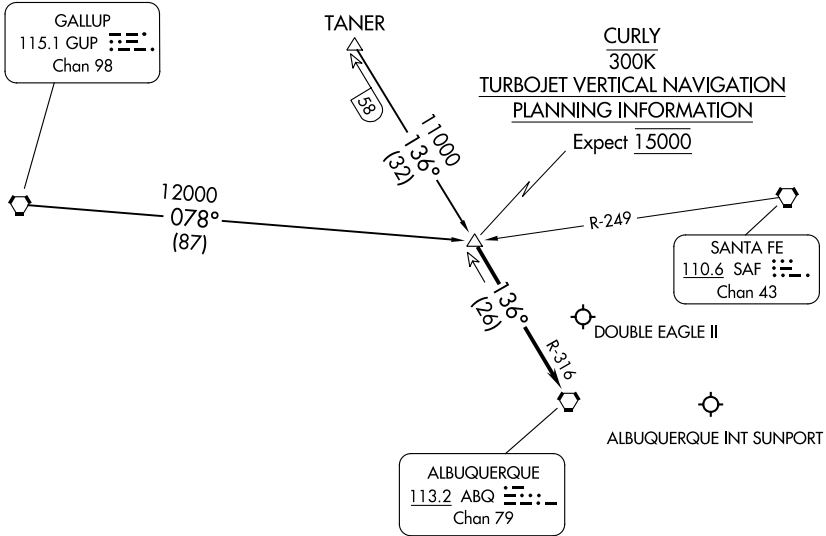


# CURLY THREE ARRIVAL

ALBUQUERQUE APP CON  
127.4 253.5  
ABQ D-ATIS  
118.0 257.7  
AEG ATIS  
119.025



SW-1, 22 FEB 2024 to 21 MAR 2024

SW-1, 22 FEB 2024 to 21 MAR 2024

NOTE: Chart not to scale.

## ARRIVAL ROUTE DESCRIPTION

GALLUP TRANSITION (GUP.CURLY3): From over GUP VORTAC on GUP R-078 to CURLY.  
Thence. . . .

TANER TRANSITION (TANER.CURLY3): From over TANER on ABQ R-316 to CURLY.  
Thence. . . .

. . . .From over CURLY on ABQ R-316 to ABQ VORTAC. Expect vectors to final approach course after passing CURLY.

# CURLY THREE ARRIVAL