

APP CRS <b>051°</b>	Rwy Idg <b>2500</b>
	TDZE <b>1209</b>
	Apt Elev <b>1209</b>

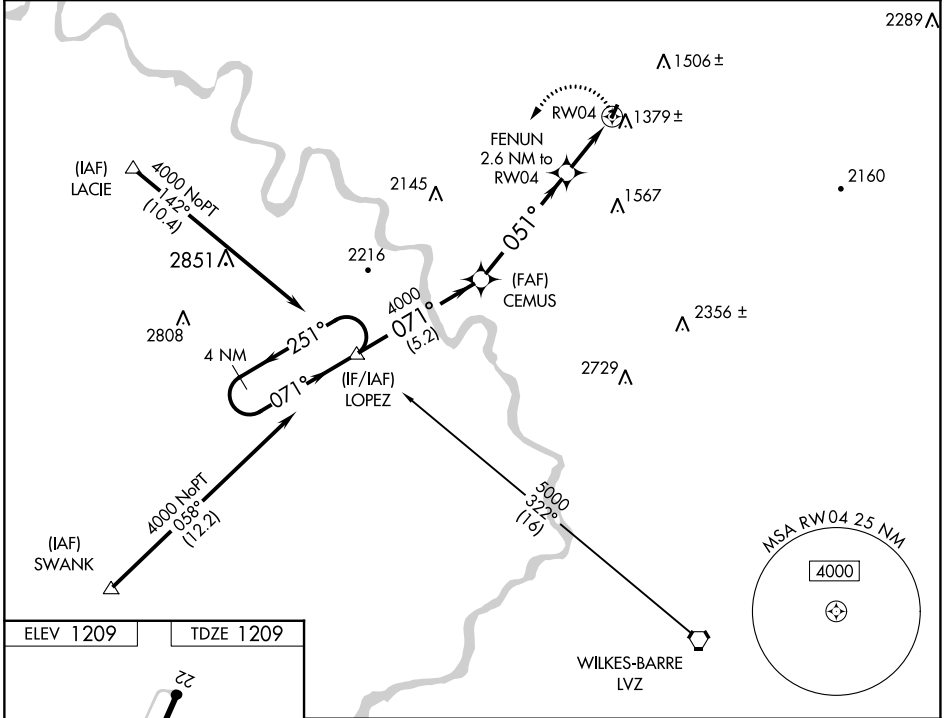
# RNAV (GPS) RWY 4

SEAMANS FLD (9N3)

**▼** DME/DME RNP-0.3 NA.  
**▲** NA Obtain local altimeter setting on CTAF; when not received, use Wilkes-Barre/Scranton Intl altimeter setting.  
 VDP NA when using Wilkes-Barre/Scranton Intl altimeter setting.

MISSED APPROACH: Climbing left turn to 4000 direct LOPEZ and hold.

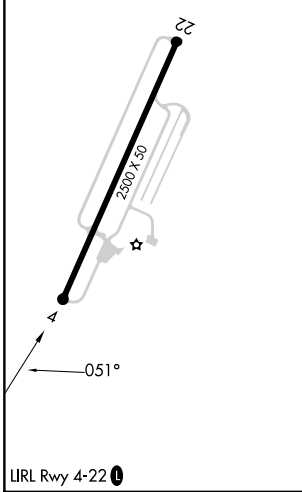
WILKES-BARRE APP CON <b>120.95 256.7</b>	UNICOM <b>122.7 (CTAF) 0</b>
---	---------------------------------



NE-4, 22 FEB 2024 to 21 MAR 2024

NE-4, 22 FEB 2024 to 21 MAR 2024

ELEV 1209	TDZE 1209
-----------	-----------



4 NM Holding Pattern	LOPEZ	CEMUS	4000	LOPEZ
	4000 ← 251° 071° →	4000	051°	△
	5.2 NM	4.9 NM	1.5 NM	1.1 NM
CATEGORY	A	B	C	D
LNAV MDA	1640-1	431 (500-1)		NA
CIRCLING	1720-1 511 (600-1)	1780-1 571 (600-1)		NA
WILKES-BARRE/SCRANTON INTL ALTIMETER SETTING MINIMUMS				
LNAV MDA	1720-1	511 (600-1)		NA
CIRCLING	1800-1 591 (600-1)	1860-1 651 (700-1)		NA