

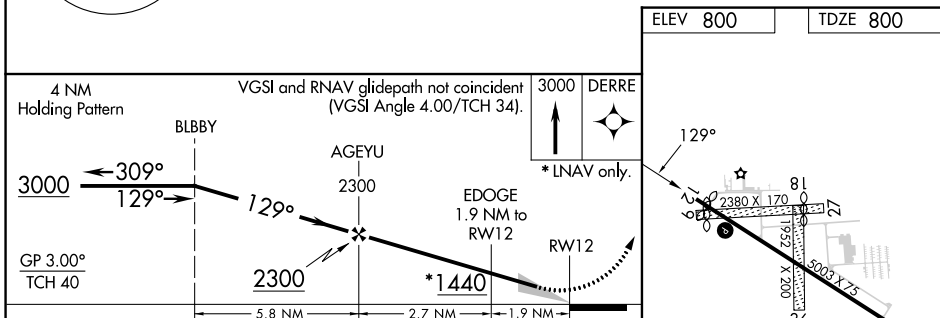
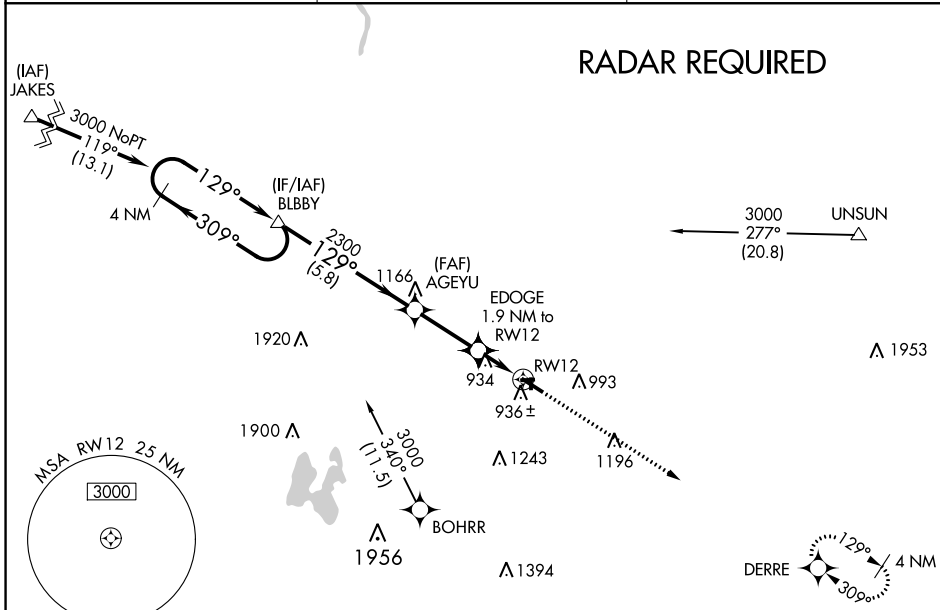
WAAS CH 53326 W12A	APP CRS 129°	Rwy Idg TDZE Apt Elev	4762 800 800
--	------------------------	-----------------------------	---

RNAV (GPS) RWY 12

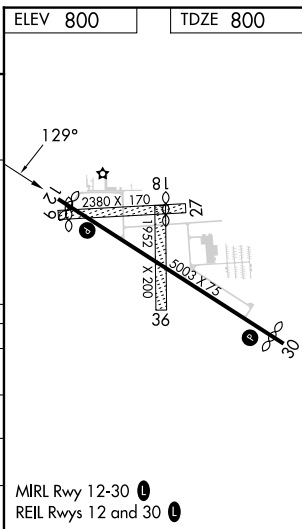
HASTINGS (9D9)

<p>▽ Circling NA to Rwy 9, 18, 27 and 36. Baro-VNAV NA. DME/DME RNP-0.3 NA. ▲ NA Use Grand Rapids altimeter setting; when not received, use Ionia altimeter setting: increase LPV DA to 1102 feet; increase LNAV/VNAV DA to 1260 feet and all visibilities ½ SM; increase all MDA 20 feet, and LNAV visibility Cat C ¼ SM.</p>	<p>MISSED APPROACH: Climb to 3000 direct DERRE and hold.</p>
---	--

GRR ASOS 118.725	GREAT LAKES APP CON* 128.4 257.6	UNICOM 123.075 (CTAF) 0
----------------------------	--	-----------------------------------



CATEGORY	A	B	C	D
LPV DA	1087-1 287 (300-1)			NA
LNAV/VNAV DA	1245-1½ 445 (500-1½)			NA
LNAV MDA	1240-1	440 (500-1)	1240-1¼ 440 (500-1¼)	NA
C CIRCLING	1380-1 580 (600-1)	1420-1 620 (700-1)	1440-1¾ 640 (700-1¾)	NA



EC-1, 22 FEB 2024 to 21 MAR 2024

EC-1, 22 FEB 2024 to 21 MAR 2024

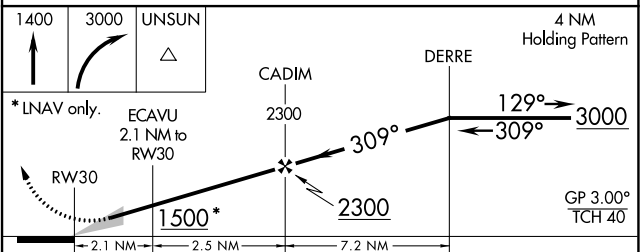
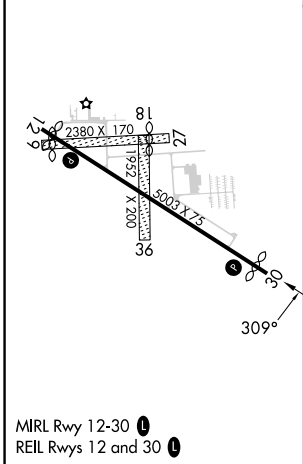
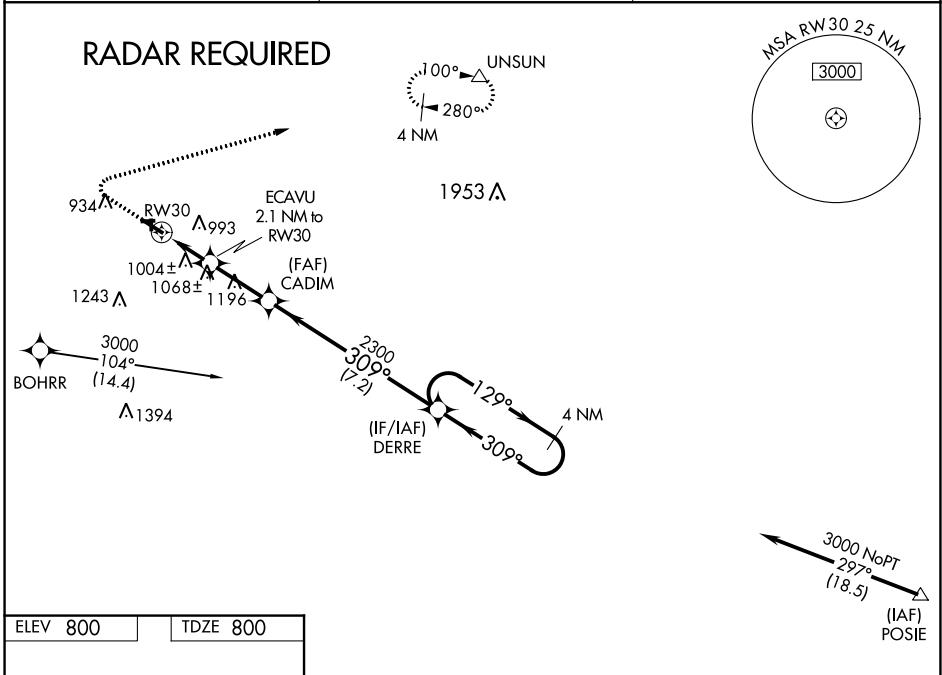
WAAS CH 86326 W30A	APP CRS 309°	Rwy Idg TDZE Apt Elev	4752 800 800
--	------------------------	-----------------------------	---

RNAV (GPS) RWY 30

HASTINGS (9D9)

RNP APCH.	<p>MISSED APPROACH: Climb to 1400 then climbing right turn to 3000 direct UNSUN and hold.</p>
<p>⚠ NA Circling NA to Rwy 9, 18, 27 and 36. Baro-VNAV NA. Use Grand Rapids altimeter setting; when not received, use Ionia altimeter setting: increase LPV DA to 1131 feet; increase LNAV/VNAV DA to 1377; increase all MDAs 20 feet.</p>	

GRR ASOS 118.725	GREAT LAKES APP CON* 128.4 257.6	UNICOM 123.075 (CTAF)
----------------------------	--	---------------------------------



CATEGORY	A	B	C	D
LPV DA	1116-1 316 (400-1)			NA
LNAV/VNAV DA	1362-1 ⁵ / ₈ 562 (600-1 ⁵ / ₈)			NA
LNAV MDA	1300-1	500 (500-1)	1300-1 ³ / ₈ 500 (500-1 ³ / ₈)	NA
C CIRCLING	1380-1 580 (600-1)	1420-1 620 (700-1)	1440-1 ³ / ₄ 640 (700-1 ³ / ₄)	NA

EC-1, 22 FEB 2024 to 21 MAR 2024

EC-1, 22 FEB 2024 to 21 MAR 2024

VOR/DME VIO 115.95 Chan 106 (Y)	APP CRS 142°	Rwy Idg 4763 TDZE 800 Apt Elev 800
---	------------------------	---

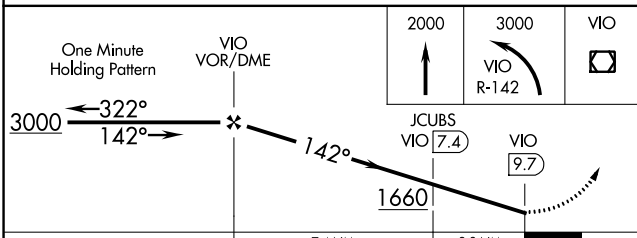
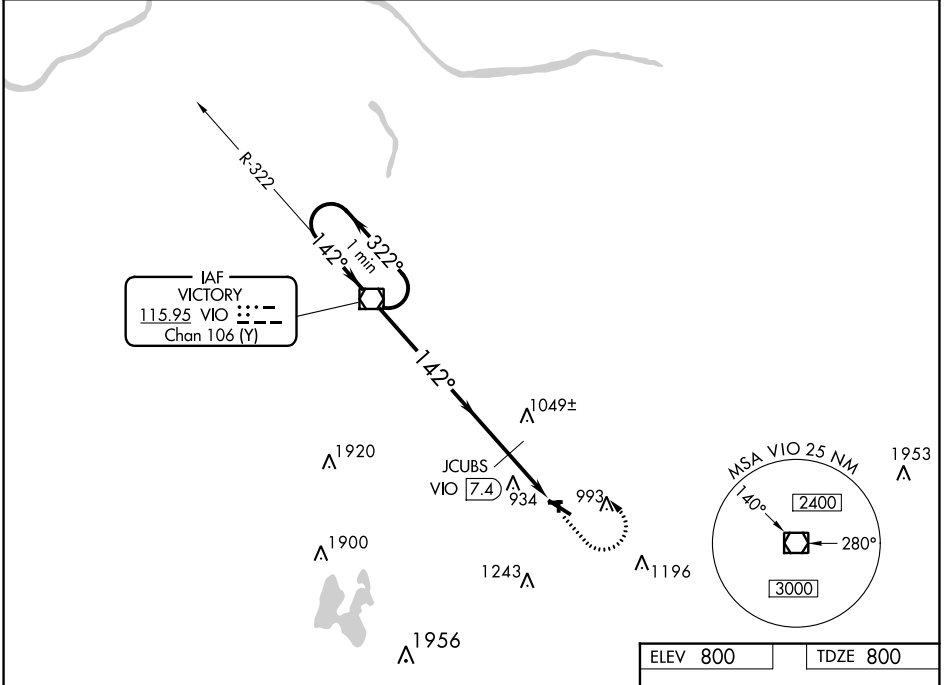
VOR RWY 12

HASTINGS (9D9)

▼ Helicopter visibility reduction below 3/4 SM NA. Use Grand Rapids altimeter setting; when not received, use Ionia altimeter setting and increase all MDA 20 feet. Increase JCUBS DME minimums S-12 Cat C visibility 1/8 mile. Circling NA to Rwy 9, 18, 27, 36.

▲ NA MISSED APPROACH: Climb to 2000, then climbing left turn to 3000 on VIO VOR/DME R-142 to VIO VOR/DME and hold.

GRR ASOS 118.725	GREAT LAKES APP CON * 128.4 257.6	UNICOM 123.075 (CTAF) 0
----------------------------	---	-----------------------------------



ELEV 800	TDZE 800
----------	----------

Detailed diagram of the final approach and runway layout. The chart shows the 142° 9.7 NM from FAF, the runway layout (81, 2380 X 170, 0, 27, 5002 X 75, 36), and the MIRA Rwy 12-30 and REIL Rwy 12 and 30. The chart also shows the VIO VOR/DME station and the JCUBS VIO 7.4 NM and VIO 9.7 NM.

MIRA Rwy 12-30 0	REIL Rwy 12 and 30 0				
FAF to MAP 9.7 NM					
Knots	60	90	120	150	180
Min:Sec	9:42	6:28	4:51	3:53	3:14

CATEGORY	A	B	C	D
S-12	1660-1 860 (900-1)	1660-1¼ 860 (900-1¼)	1660-2½ 860 (900-2½)	NA
C CIRCLING	1660-1 860 (900-1)	1660-1¼ 860 (900-1¼)	1660-2½ 860 (900-2½)	NA
JCUBS DME MINIMUMS				
S-12	1340-1	540 (600-1)	1340-1½ 540 (600-1½)	NA
C CIRCLING	1380-1 580 (600-1)	1420-1 620 (700-1)	1440-1¾ 640 (700-1¾)	NA

EC-1, 22 FEB 2024 to 21 MAR 2024

EC-1, 22 FEB 2024 to 21 MAR 2024