

(ANGIL1.ANGIL) 22363

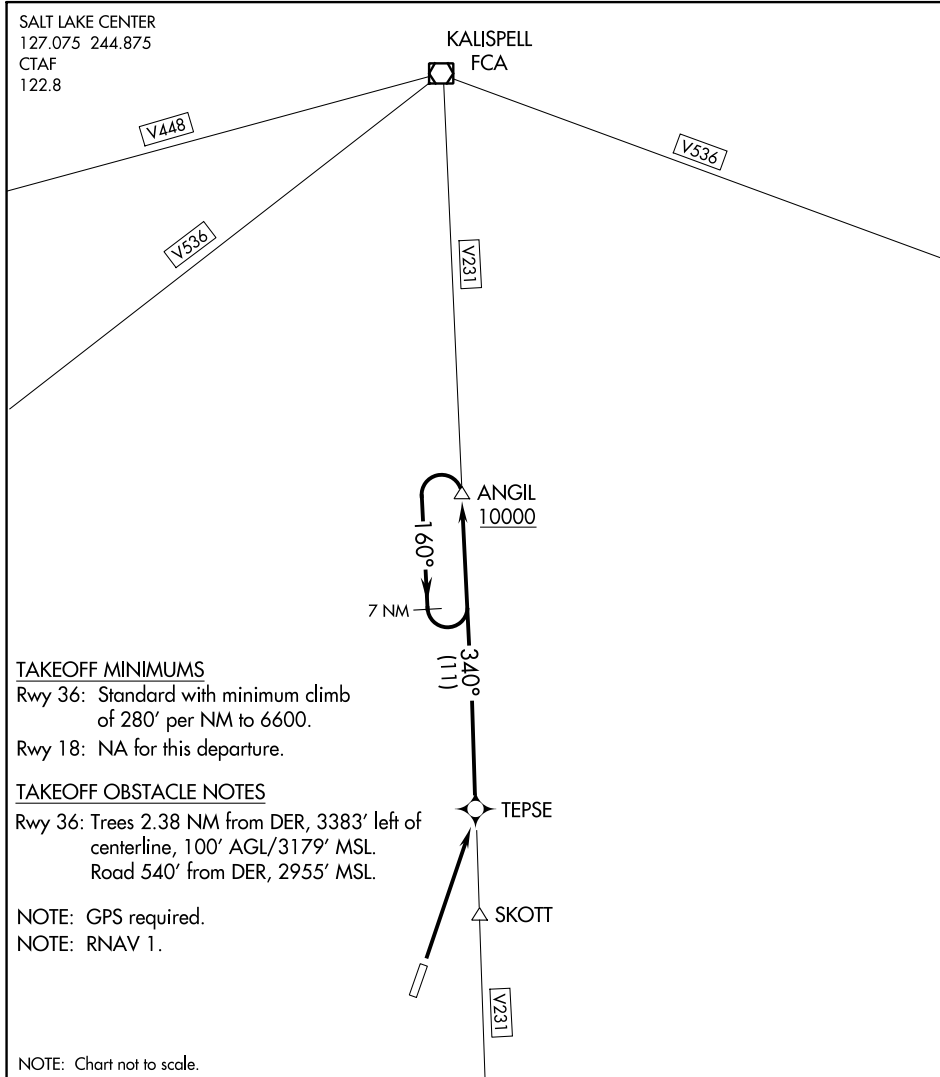
ANGIL ONE DEPARTURE (OBSTACLE) (RNAV)

AL-9529 (FAA)

POLSON (8S1)
POLSON, MONTANA

SALT LAKE CENTER
127.075 244.875
CTAF
122.8

KALISPELL
FCA



TAKEOFF MINIMUMS

Rwy 36: Standard with minimum climb of 280' per NM to 6600.

Rwy 18: NA for this departure.

TAKEOFF OBSTACLE NOTES

Rwy 36: Trees 2.38 NM from DER, 3383' left of centerline, 100' AGL/3179' MSL.
Road 540' from DER, 2955' MSL.

NOTE: GPS required.

NOTE: RNAV 1.

NOTE: Chart not to scale.

DEPARTURE ROUTE DESCRIPTION

TAKEOFF RUNWAY 36: Climb direct to TEPSE WP, then via 340° track to ANGIL, Thence. . . .

. . . .Climb in the ANGIL holding pattern to cross ANGIL at or above 10000 prior to proceeding on course.

ANGIL ONE DEPARTURE (OBSTACLE) (RNAV)

(ANGIL1.ANGIL) 30SEP04

POLSON, MONTANA
POLSON (8S1)

NW-1, 22 FEB 2024 to 21 MAR 2024

NW-1, 22 FEB 2024 to 21 MAR 2024