

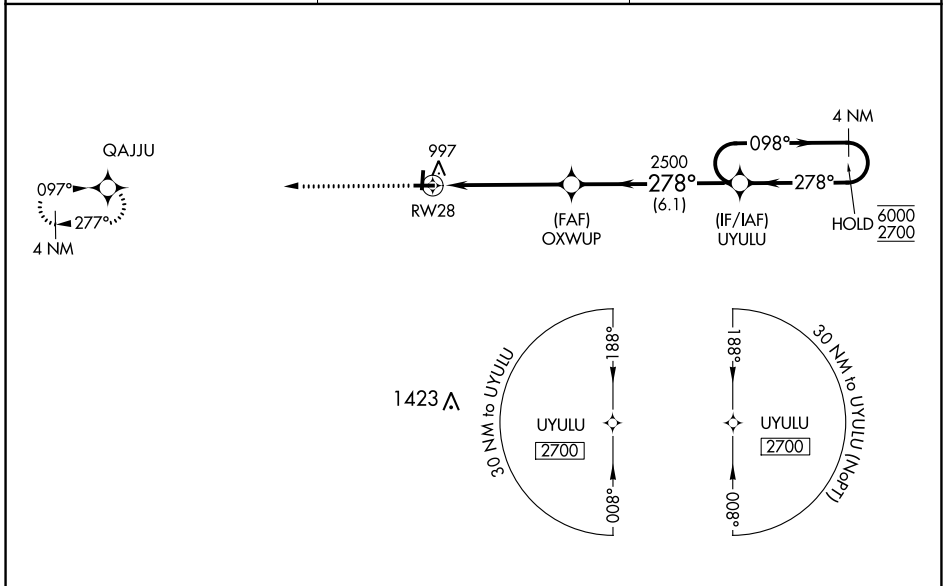
WAAS CH <b>62944</b> <b>W28A</b>	APP CRS <b>278°</b>	Rwy Idg TDZE <b>881</b> Apt Elev <b>895</b>
--	------------------------	---

# RNAV (GPS) RWY 28

MARLETTE TOWNSHIP (77G)

RNP APCH - GPS.	<p><b>▽</b> Rwy 28 helicopter visibility reduction below <math>\frac{3}{4}</math> SM NA. Baro-VNAV NA.                  Use Caro altimeter setting, when not received, use Bad Axe altimeter setting and increase LPV DA to 1216 feet; increase LNAV/VNAV DA to 1279 feet; increase all MDAs 20 feet and Circling visibility Cat D <math>\frac{1}{4}</math> SM. Circling Rwy 10, 19 NA at night.</p>	MISSED APPROACH: Climb to 3000 direct QAJJU and hold.
-----------------	--	--

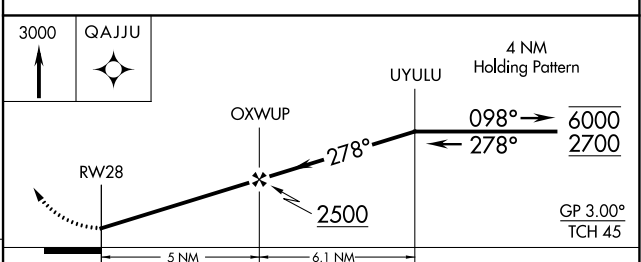
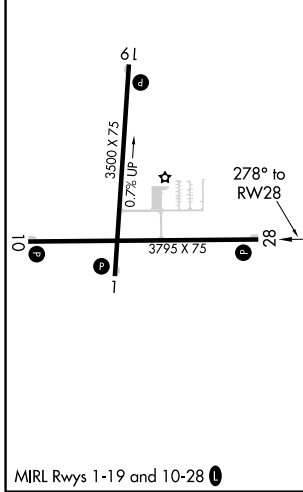
CFS AWOS-3 <b>119.275</b>	CLEVELAND CENTER <b>127.7 290.425</b>	UNICOM <b>122.8 (CTAF) 0</b>
------------------------------	--	---------------------------------



EC-1, 22 FEB 2024 to 21 MAR 2024

EC-1, 22 FEB 2024 to 21 MAR 2024

ELEV 895	TDZE 881
----------	----------



CATEGORY	A	B	C	D
LPV DA		1199-1	318 (400-1)	
LNAV/VNAV DA		1262-1 $\frac{1}{8}$	381 (400-1 $\frac{1}{8}$ )	
LNAV MDA	1340-1	459 (500-1)	1340-1 $\frac{3}{8}$	459 (500-1 $\frac{3}{8}$ )
<b>C</b> CIRCLING	1420-1	525 (600-1)	1420-1 $\frac{1}{2}$ 525 (600-1 $\frac{1}{2}$ )	1560-2 665 (700-2)