

WAAS CH 70427 W27A	APP CRS 274°	Rwy Idg TDZE Apt Elev	4003 1312 1312
--	------------------------	-----------------------------	---

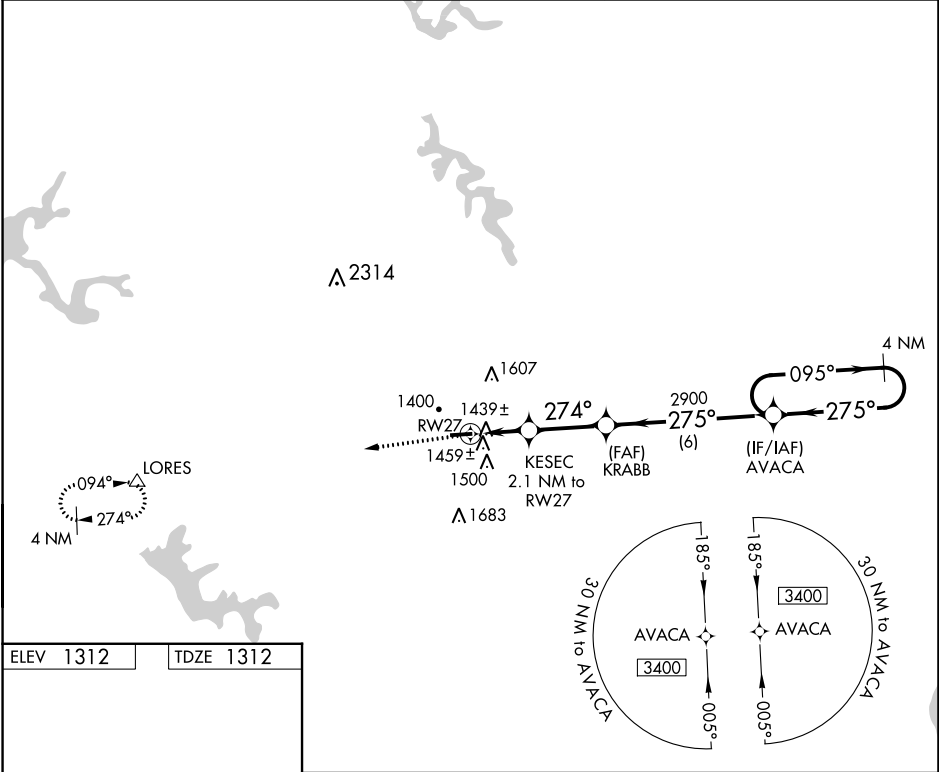
RNAV (GPS) RWY 27

BARNESVILLE-BRADFIELD (6G5)

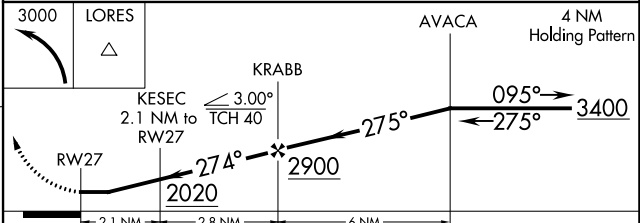
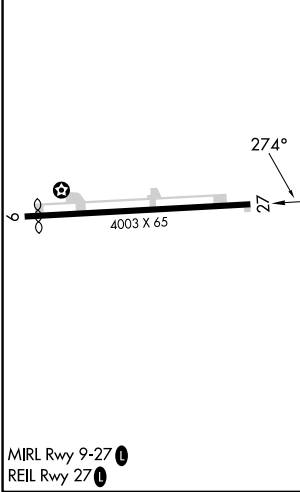
NA DME/DME RNP-0.3 NA. Procedure NA at night. Visibility reduction by helicopters NA. Use Wheeling, WV altimeter setting; When not received use Washington, PA altimeter setting and increase all MDA 40 feet.

MISSED APPROACH: Climbing left turn to 3000 direct LORES and hold.

HLG ASOS 127.375	CLEVELAND CENTER 126.95 239.30	UNICOM 123.0 (CTAF) 1
----------------------------	--	--



ELEV 1312	TDZE 1312
------------------	------------------



CATEGORY	A	B	C	D
LP MDA	1780-1	468 (500-1)		NA
LNAV MDA	1800-1	488 (500-1)		NA
CIRCLING	1880-1 568 (600-1)	1940-1 628 (700-1)		NA

EC-2, 22 FEB 2024 to 21 MAR 2024

EC-2, 22 FEB 2024 to 21 MAR 2024

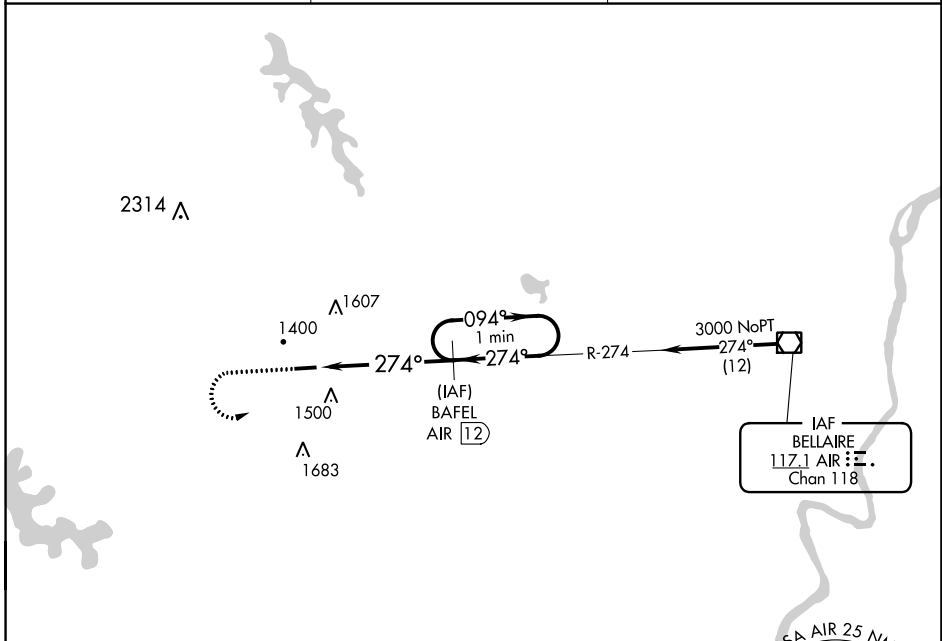
VOR/DME AIR 117.1 Chan 118	APP CRS 274°	Rwy Idg TDZE Apt Elev	4003 1312 1312
--	------------------------	-----------------------------	---

VOR/DME RWY 27

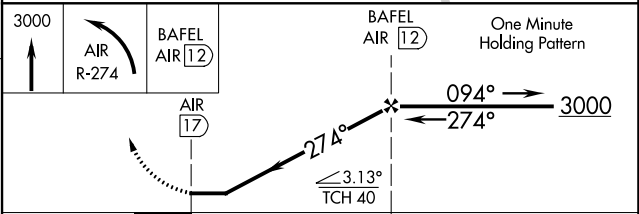
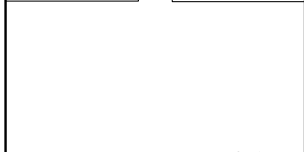
BARNESVILLE-BRADFIELD (6G5)

NA Use Wheeling, WV altimeter setting.	MISSED APPROACH: Climb to 3000, then left turn via R-274 to BAFEL/12 DME and hold.
---	--

HLG ASOS 127.375	CLEVELAND CENTER 126.95 239.30	UNICOM 123.0 (CTAF) 1
----------------------------	--	--



ELEV 1312	TDZE 1312
-----------	-----------



CATEGORY	A	B	C	D
S-27	1880-1	568 (600-1)	NA	
CIRCLING	1940-1	628 (700-1)	NA	

MRL Rwy 9-27 **1**
REIL Rwy 27 **1**

EC-2, 22 FEB 2024 to 21 MAR 2024

EC-2, 22 FEB 2024 to 21 MAR 2024