

RNAV (GPS) RWY 1

BUTLER MUNI (6A1)

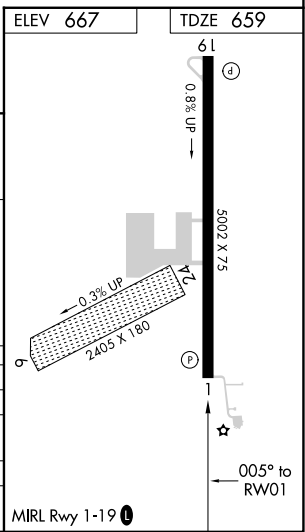
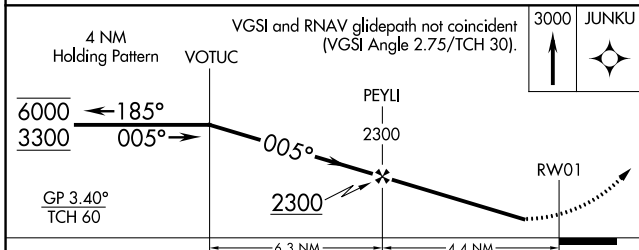
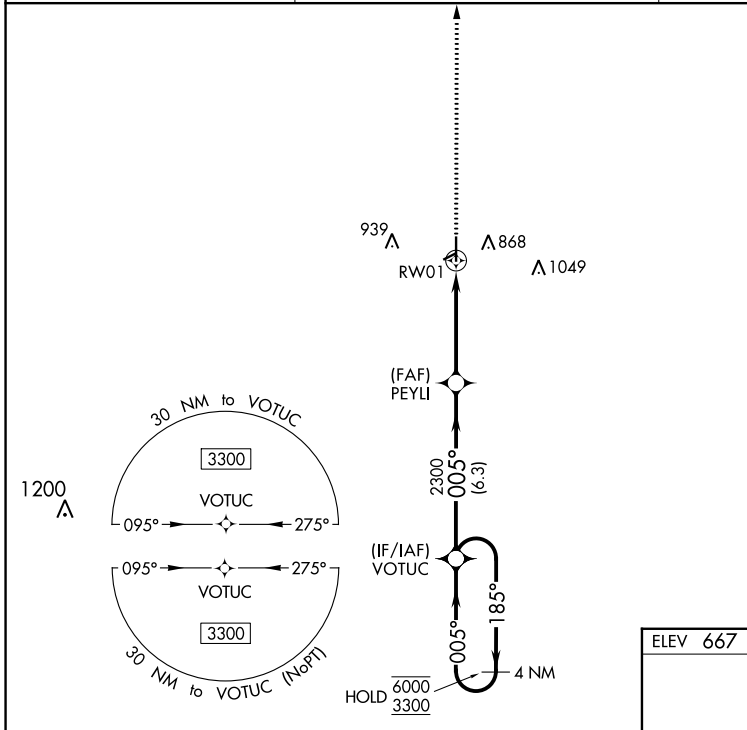
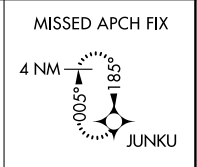
WAAS CH 73033 W01A	APP CRS 005°	Rwy Idg TDZE Apt Elev	5002 659 667
---------------------------------	------------------------	-----------------------------	---

RNP APCH.

⚠ Circling NA to Rwy 6 and 24. Rwy 1 helicopter visibility reduction below 1 SM NA.
 ⚠ Straight-in Rwy 1 NA at night, Circling Rwy 1 NA at night. For uncompensated Baro-VNAV systems, LNAV/VNAV NA below -16°C or above 54°C.

MISSED APPROACH: Climb to 3000 direct JUNKU and hold.

AWOS-3 119.525	ATLANTA APP CON★ 124.2 279.6	CTAF 122.9
--------------------------	--	----------------------



CATEGORY	A	B	C	D
LPV DA		934-1	275 (300-1)	
LNAV/VNAV DA		1036-1	377 (400-1)	
LNAV MDA	1140-1	481 (500-1)	1140-1 ³ / ₈	481 (500-1 ³ / ₈)
CIRCLING	1180-1	513 (600-1)	1240-1 ¹ / ₂ 573 (600-1 ¹ / ₂)	1360-2 ¹ / ₄ 693 (700-2 ¹ / ₄)

SE-4, 22 APR 2021 to 20 MAY 2021

SE-4, 22 APR 2021 to 20 MAY 2021

BUTLER, GEORGIA

AL-9845 (FAA)

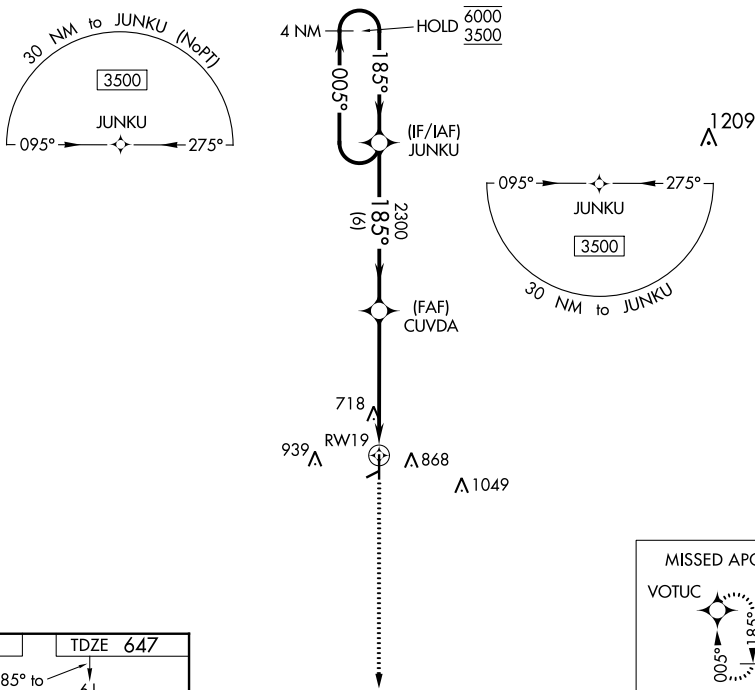
20310

WAAS CH 99733 W19A	APP CRS 185°	Rwy Idg TDZE 647 Apt Elev 667	5002
--	------------------------	---	-------------

RNAV (GPS) RWY 19

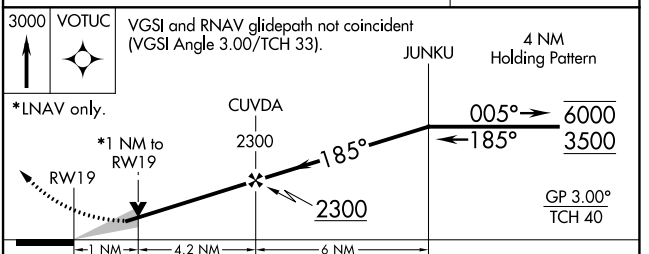
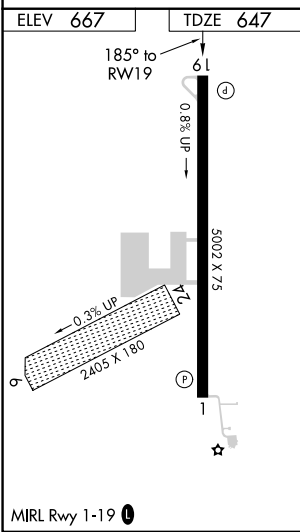
BUTLER MUNI (6A1)

RNP APCH.		MISSED APPROACH: Climb to 3000 direct VOTUC and hold.
<p>▼ Circling NA to Rwys 6 and 24. Circling to Rwy 1 NA at night. For uncompensated Baro-VNAV systems, LNAV/VNAV NA below -16°C or above 54°C.</p>		
AWOS-3 119.525	ATLANTA APP CON * 124.2 279.6	CTAF 122.9



SE-4, 22 APR 2021 to 20 MAY 2021

SE-4, 22 APR 2021 to 20 MAY 2021



↑ VOTUC	VGSi and RNAV glidepath not coincident (VGSi Angle 3.00/TCH 33).		4 NM Holding Pattern	
*LNAV only.	CUVDA	JUNKU	6000	3500
	2300	185°	005°	185°
	2300	185°	005°	185°
	GP 3.00°	TCH 40		
CATEGORY	A	B	C	D
LPV DA		847-1	200 (200-1)	
LNAV/VNAV DA		911-1	264 (300-1)	
LNAV MDA		980-1	333 (400-1)	
☑ CIRCLING	1180-1	513 (600-1)	1240-1½ 573 (600-1½)	1360-2¼ 693 (700-2¼)

BUTLER, GEORGIA
Amdt 2A 05NOV20

32°34'N-84°15'W

BUTLER MUNI (6A1)
RNAV (GPS) RWY 19