

WAAS CH <b>45737</b> <b>W16A</b>	APP CRS <b>155°</b>	Rwy Idg TDZE Apt Elev	<b>4997</b> <b>82</b> <b>83</b>
----------------------------------------	------------------------	-----------------------------	---------------------------------------

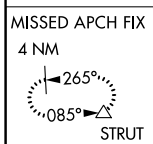
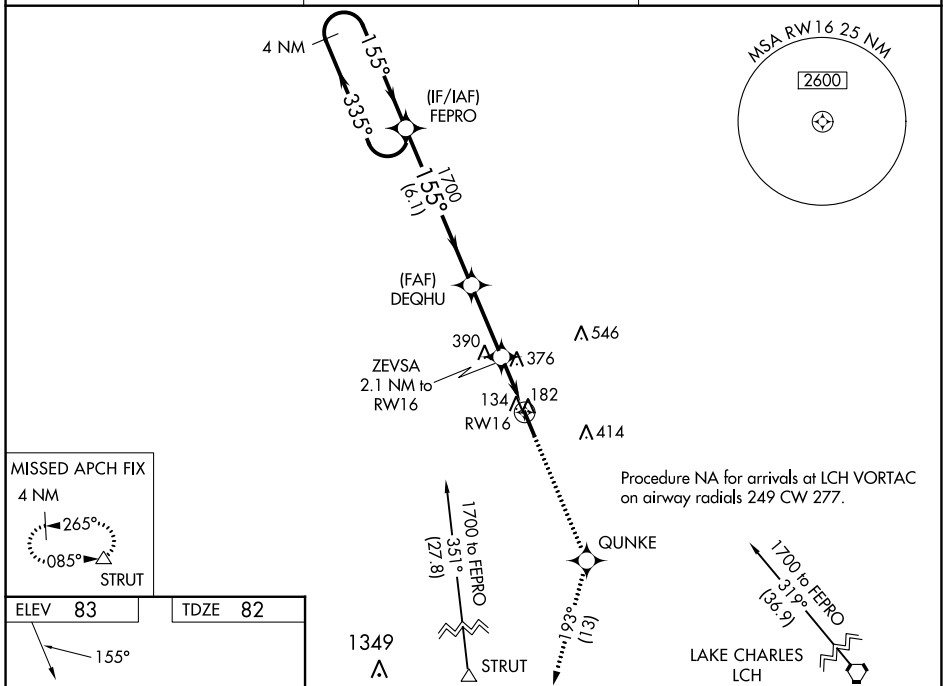
# RNAV (GPS) RWY 16

DE QUINCY INDUSTRIAL AIRPARK (5R8)

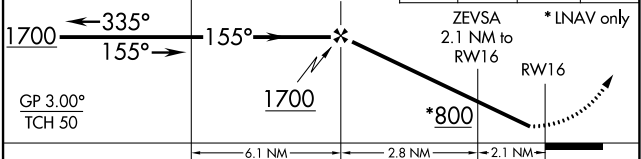
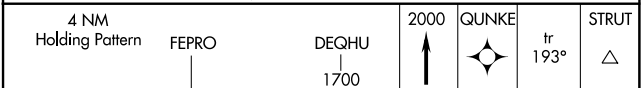
**▼** Baro-VNAV NA when using Sulphur altimeter setting. DME/DME RNP-0.3 NA.  
**▲ NA** When local altimeter setting not received, use Sulphur altimeter setting and increase all DA 55 feet and MDA 60 feet, increase LPV visibility all Cats ¼, LNAV/VNAV all Cats ¼ and LNAV and Circling Cat C visibility ¼ mile. For uncompensated Baro-VNAV systems, LNAV/VNAV NA below -15°C (5°F) or above 54°C (130°F). Helicopter visibility reduction below 1 SM NA. Night landing: Rwy 16 NA.

**MISSED APPROACH:** Climb to 2000 direct GUNKE and on track 193° to STRUT and hold.

AWOS-3PT <b>121.2</b>	LAKE CHARLES APP CON * <b>119.35 282.3</b>	UNICOM <b>122.8 (CTAF) 0</b>
--------------------------	-----------------------------------------------	---------------------------------



ELEV 83	TDZE 82
---------	---------



CATEGORY	A	B	C	D
LPV DA	365-1	283 (300-1)		NA
LNAV/VNAV DA	799-2½	717 (800-2½)		NA
LNAV MDA	700-1	618 (700-1)	700-1¾ 618 (700-1¾)	NA
<b>C</b> CIRCLING	700-1 617 (700-1)	740-1 657 (700-1)	740-1¾ 657 (700-1¾)	NA

SC-4, 22 FEB 2024 to 21 MAR 2024

SC-4, 22 FEB 2024 to 21 MAR 2024

WAAS CH <b>87036</b> <b>W34A</b>	APP CRS <b>335°</b>	Rwy Idg TDZE Apt Elev	<b>4997</b> <b>83</b> <b>83</b>
----------------------------------------	------------------------	-----------------------------	---------------------------------------

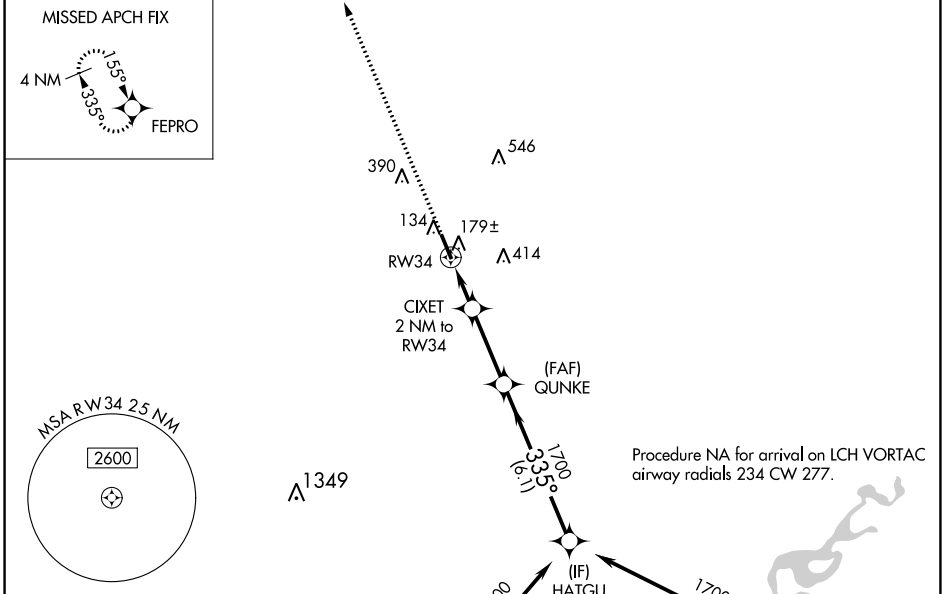
# RNAV (GPS) RWY 34

DE QUINCY INDUSTRIAL AIRPARK (5R.8)

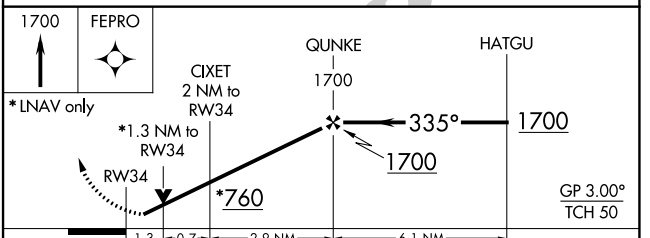
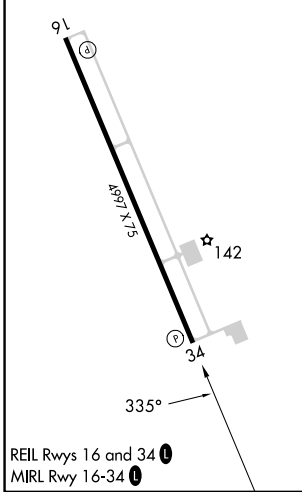
**NA** For uncompensated Baro-VNAV systems, LNAV/VNAV NA below -1.5°C (5°F) or above 54°C (130°F). DME/DME RNP-0.3 NA. Helicopter visibility reduction below 3/4 SM NA. When local altimeter setting not received, use Sulphur altimeter setting and increase all DA 55 feet and MDA 60 feet, increase LPV and LNAV/VNAV visibility all Cats 1/4, LNAV and Circling Cat C visibility 3/8 mile. Baro-VNAV and VDP NA with Sulphur altimeter setting. Night landing Rwy 16 NA.

MISSED APPROACH: Climb to 1700 direct FEPRO and hold.

AWOS-3PT <b>121.2</b>	LAKE CHARLES APP CON ★ <b>119.35 282.3</b>	UNICOM <b>122.8 (CTAF) ①</b>
--------------------------	-----------------------------------------------	---------------------------------



ELEV 83	TDZE 83
---------	---------



CATEGORY	B			D
	A	B	C	
LPV DA	339-3/4	256 (300-3/4)		NA
LNAV/VNAV DA	333-3/4	250 (300-3/4)		NA
LNAV MDA	540-1	457 (500-1)	540-1 3/8 457 (500-1 3/8)	NA
<b>C</b> CIRCLING	540-1 457 (500-1)	740-1 657 (700-1)	740-1 3/4 657 (700-1 3/4)	NA

SC-4, 22 FEB 2024 to 21 MAR 2024

SC-4, 22 FEB 2024 to 21 MAR 2024