

WAAS CH 53535 W18A	APP CRS 182°	Rwy Idg 3197 TDZE 337 Apt Elev 337
--	------------------------	---

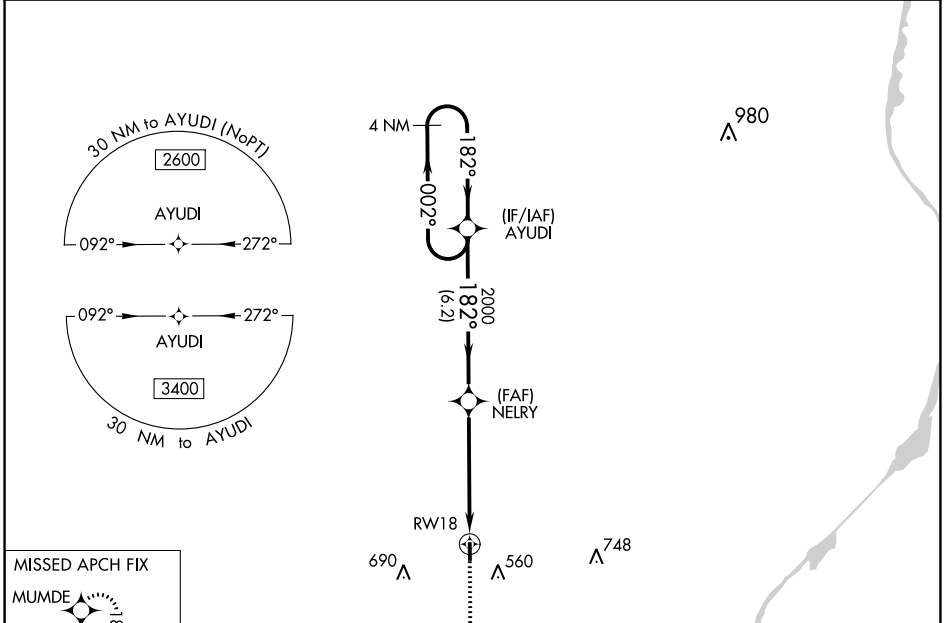
RNAV (GPS) RWY 18

OKOLONA MUNI/RICHARD STOVALL FLD (5A4)

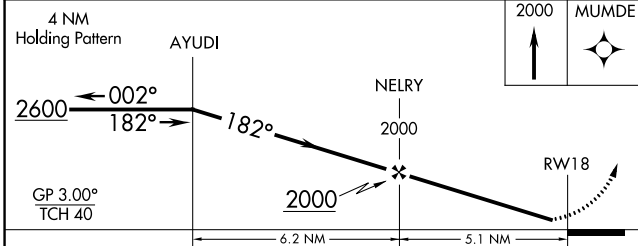
⚠ NA Baro-VNAV NA. DME/DME RNP-0.3 NA. Use Tupelo altimeter setting; when not received, use Columbus Air Force Base altimeter setting and increase all DA 41 feet and all MDA 60 feet, increase LPV and LNAV/VNAV all Cats visibility 1/8 mile, LNAV Cat C visibility 1/2 mile. Rwy 18 helicopter visibility reduction below 3/4 SM NA.

MISSED APPROACH: Climb to 2000 direct MUMDE and hold.

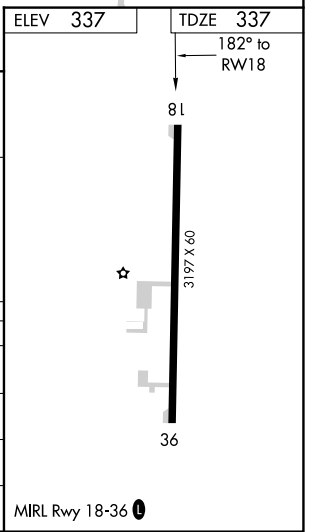
COLUMBUS APP CON ★ 126.075 229.15	CTAF 122.9 0
---	------------------------



ELEV 337	TDZE 337
182° to RWY 18	



CATEGORY	A	B	C	D
LPV DA	624-1 287 (300-1)			NA
LNAV/VNAV DA	669-1 332 (400-1 1/8)			NA
LNAV MDA	820-1 483 (500-1)	820-1 483 (500-1 3/8)		NA
C CIRCLING	920-1 583 (600-1)	1080-2 743 (800-2 1/4)		NA



SC-4, 22 FEB 2024 to 21 MAR 2024

SC-4, 22 FEB 2024 to 21 MAR 2024

WAAS CH 99535 W36A	APP CRS 002°	Rwy Idg 3197 TDZE 337 Apt Elev 337
--	------------------------	---

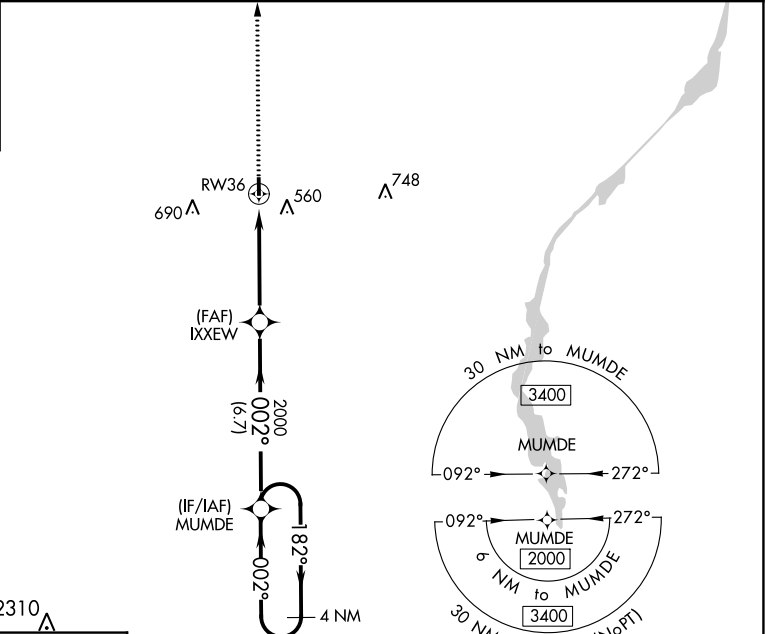
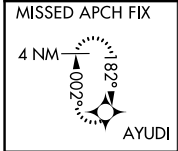
RNAV (GPS) RWY 36

OKOLONA MUNI/RICHARD STOVALL FLD (5A4)

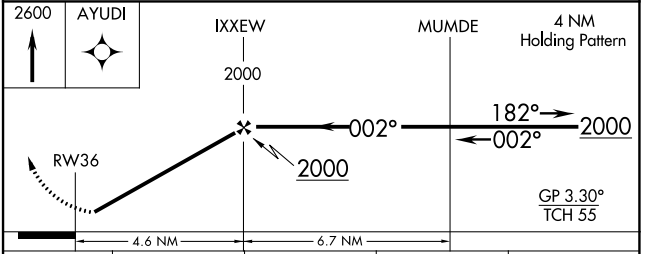
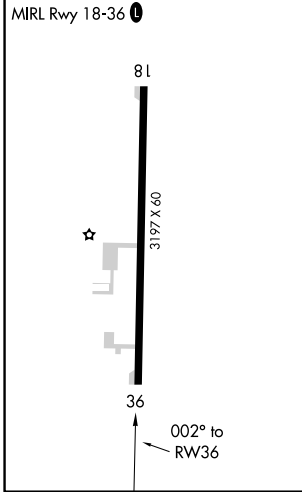
Baro-VNAV NA. DME/DME RNP-0.3 NA. Use Tupelo altimeter setting; when not received, use Columbus Air Force Base altimeter setting and increase all DA 41 feet and all MDA 60 feet; increase LNAV/VNAV all Cats visibility ¼ mile and LNAV Cat C visibility ¼ mile. Rwy 36 helicopter visibility reduction below ¾ SM NA.

MISSED APPROACH: Climb to 2600 direct AYUDI and hold.

COLUMBUS APP CON ★ **126.075 229.15** CTAF **122.9**



ELEV 337 TDZE 337



CATEGORY	A	B	C	D
LPV DA	624-1 287 (300-1)			NA
LNAV/VNAV DA	732-1½ 395 (400-1½)			NA
LNAV MDA	860-1 523 (600-1)	860-1½ 523 (600-1½)		NA
<input checked="" type="checkbox"/> CIRCLING	920-1 583 (600-1)	1080-2¼ 743 (800-2¼)		NA

SC-4, 22 FEB 2024 to 21 MAR 2024

SC-4, 22 FEB 2024 to 21 MAR 2024