

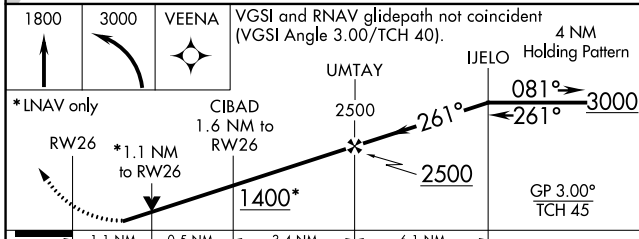
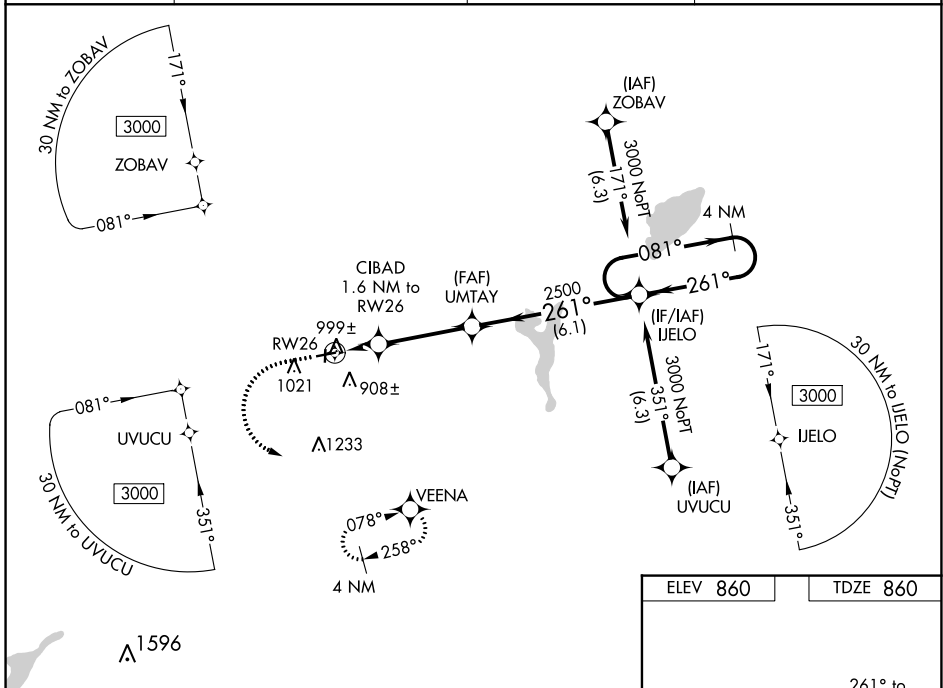
WAAS CH 73023 W26A	APP CRS 261°	Rwy Idg TDZE Apt Elev	3900 860 860
--	------------------------	-----------------------------	---

RNAV (GPS) RWY 26

EAST TROY MUNI (57C)

RNP APCH. ▼ For uncompensated Baro-VNAV systems, LNAV/VNAV NA below -16°C (4°F) or above 54°C (130°F). Obtain local altimeter setting on CTAF; when not received, use General Mitchell Intl altimeter setting and increase all DA 72 feet and all MDA 80 feet, increase LNAV/VNAV visibility all Cats ¼ mile. Rwy 26 helicopter visibility reduction below ¾ SM NA. Baro-VNAV and VDP NA when using General Mitchell Intl altimeter setting.	MISSED APPROACH: Climb to 1800 then climbing left turn to 3000 direct VEENA and hold.
---	---

AWOS-3PT 118.125	MILWAUKEE APP CON 125.35 307.0	GCO 121.725	UNICOM 123.0 (CTAF) 0
----------------------------	--	-----------------------	--



ELEV 860	TDZE 860
----------	----------

Diagram of RWY 26 showing dimensions: 3900 X 75, 2448 X 75, 36, 0.4% UP, 0.4% UP, 81, 261° to RW26.

MIRL Rwy 8-26 **0**
REIL Rws 8 and 26 **0**

EC-3, 22 FEB 2024 to 21 MAR 2024

EC-3, 22 FEB 2024 to 21 MAR 2024

WAAS CH 78423 W08A	APP CRS 081°	Rwy Idg TDZE Apt Elev	3900 851 860
--	------------------------	-----------------------------	---

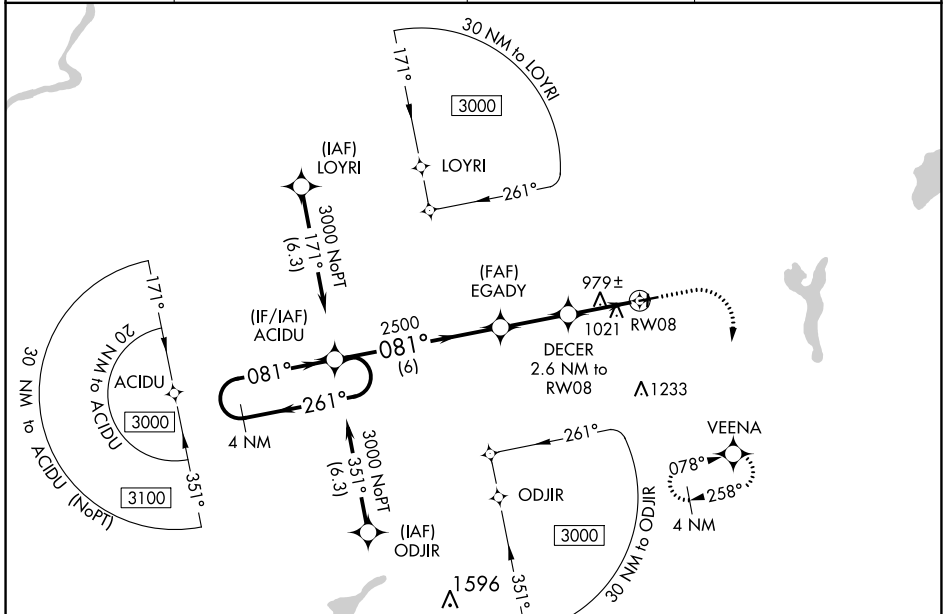
RNAV (GPS) RWY 8

EAST TROY MUNI (57C)

RNP APCH.
 ▼ Obtain local altimeter setting on CTAF; when not received use General Mitchell Intl altimeter setting and increase all MDA 80 feet. Rwy 8 helicopter visibility reduction below 3/4 SM NA. VDP NA when using General Mitchell Intl altimeter setting.

MISSED APPROACH: Climb to 2400 then climbing right turn to 3000 direct VEENA and hold.

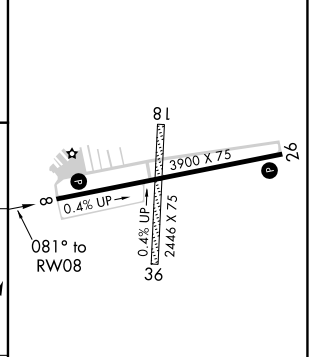
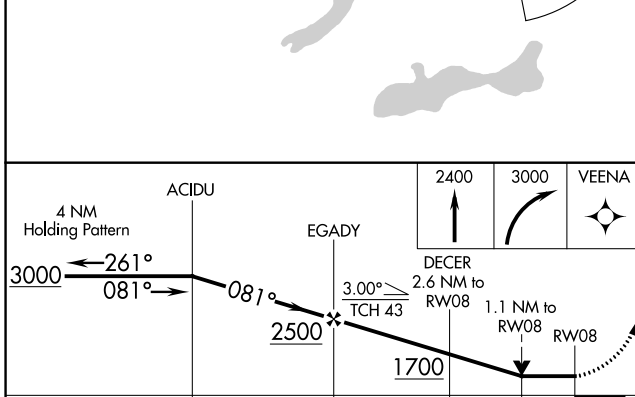
AWOS-3PT 118.125	MILWAUKEE APP CON 125.35 307.0	GCO 121.725	UNICOM 123.0 (CTAF) 📻
----------------------------	--	-----------------------	--



EC-3, 22 FEB 2024 to 21 MAR 2024

EC-3, 22 FEB 2024 to 21 MAR 2024

ELEV 860	TDZE 851
----------	----------



CATEGORY	A	B	C	D
LP MDA	1240-1	389 (400-1)		NA
LNAV MDA	1280-1	429 (500-1)		NA

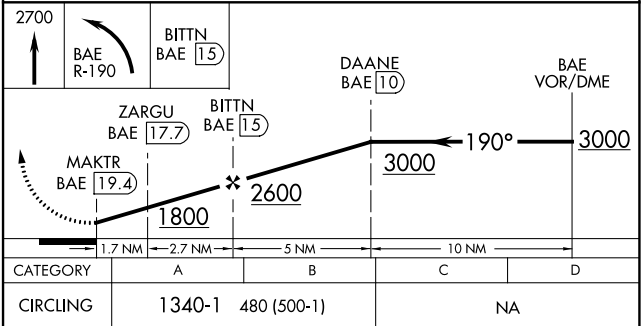
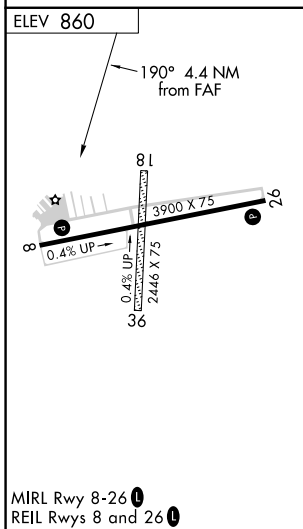
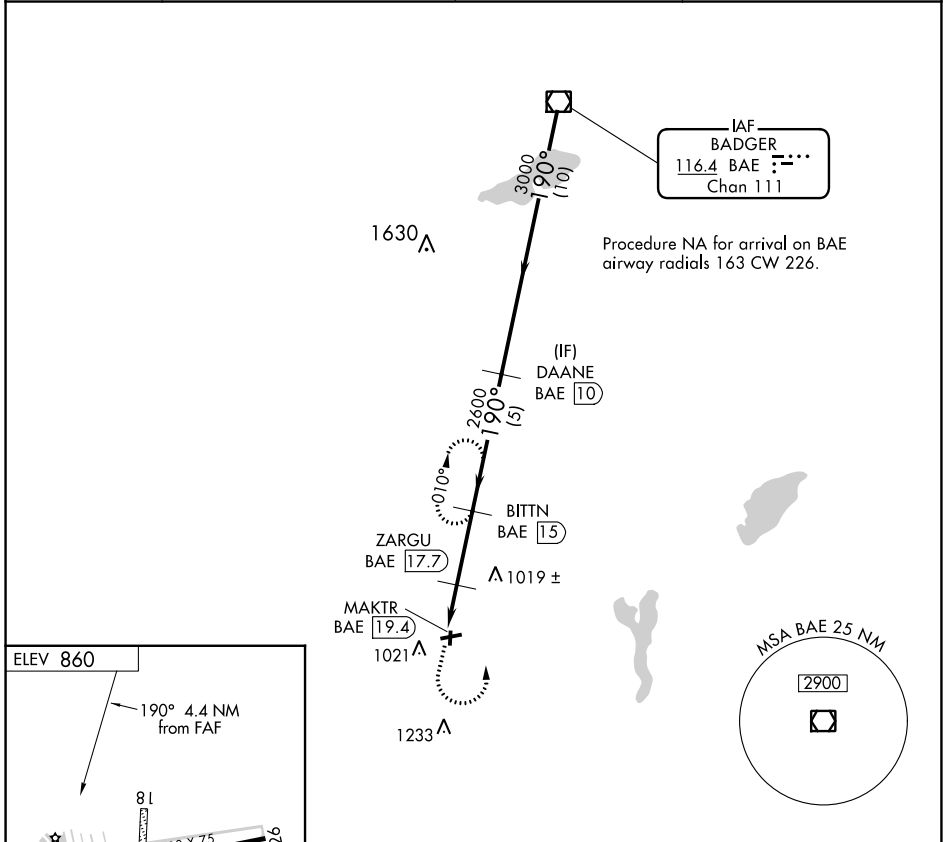
MIRL Rwy 8-26 **📻**
 REIL Rws 8 and 26 **📻**

VOR/DME BAE 116.4 Chan 111	APP CRS 190°	Rwy Idg TDZE Apt Elev	N/A N/A 860
--	------------------------	-----------------------------	--

VOR/DME-A
EAST TROY MUNI (57C)

<p>∇ Circling NA to Rwys 18 and 36.</p>	<p>MISSED APPROACH: Climb to 2700 then left turn on BAE VOR/DME R-190 to BITTN/15 DME and hold.</p>
--	---

AWOS-3PT 118.125	MILWAUKEE APP CON 125.35 307.0	GCO 121.725	UNICOM 123.0 (CTAF) 📞
----------------------------	--	-----------------------	--



EC-3, 22 FEB 2024 to 21 MAR 2024

EC-3, 22 FEB 2024 to 21 MAR 2024