

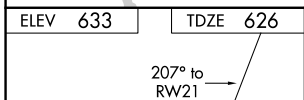
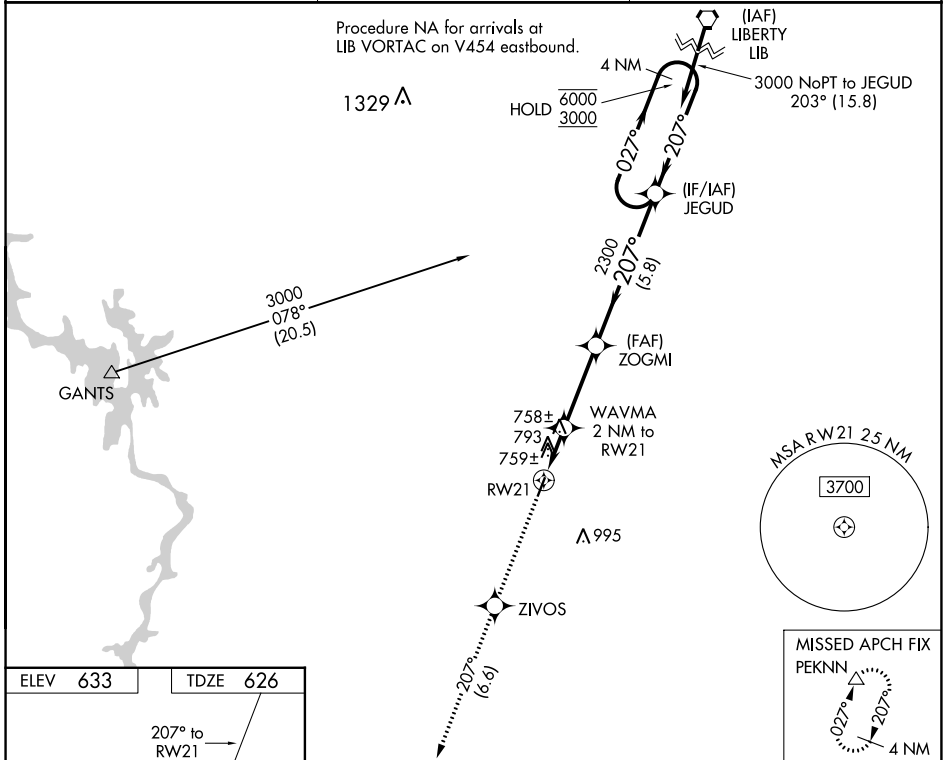
WAAS CH 72935 W21A	APP CRS 207°	Rwy Idg TDZE 626 Apt Elev 633
--	------------------------	---

RNAV (GPS) RWY 21

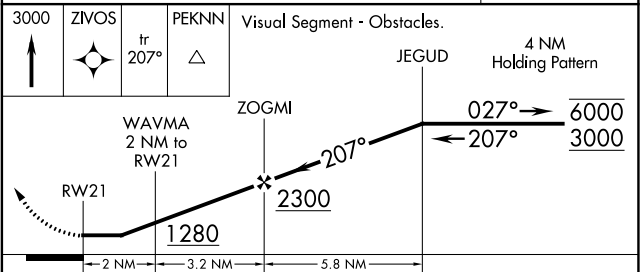
MONTGOMERY COUNTY (43A)

RNP APCH-GPS.	MISSED APPROACH: Climb to 3000 direct ZIVOS and on track 207° to PEKNN and hold.
<p>▼ Rwy 21 helicopter visibility reduction below 1 SM NA. Use Asheboro altimeter setting; when not received, use Albemarle altimeter setting. Procedure NA at night.</p> <p>▲ NA</p>	

HBI AWOS-3 119.275	FAYETTEVILLE APP CON 127.8 343.725	UNICOM 122.8 (CTAF) 0
------------------------------	--	---------------------------------



ELEV 633	TDZE 626
MIRL Rwy 3-21 0	



CATEGORY	A	B	C	D
LP MDA	1060-1	434 (500-1)		NA
LNAV MDA	1100-1	474 (500-1)		NA
<input checked="" type="checkbox"/> CIRCLING	1240-1 607 (700-1)	1340-1 707 (800-1)		NA

WAAS CH 61235 W03A	APP CRS 027°	Rwy Idg 4002 TDZE 617 Apt Elev 633
--	------------------------	---

RNAV (GPS) RWY 3

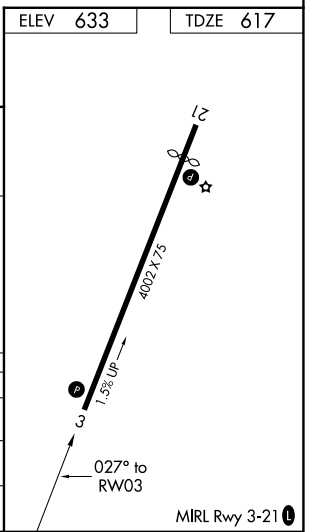
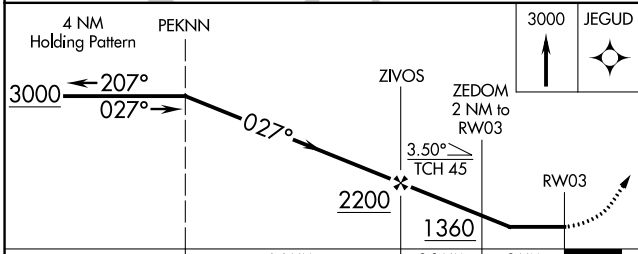
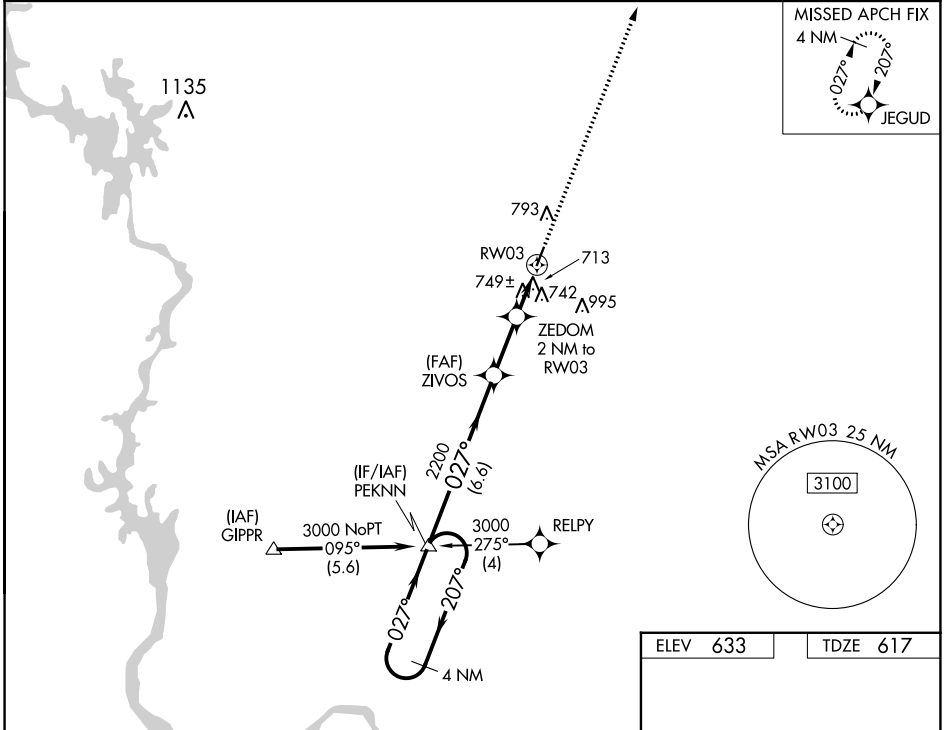
MONTGOMERY COUNTY (43A)

RNP APCH-GPS.

Use Asheville alimeter setting; when not received, use Albemarle alimeter setting.
 ⚠ NA Circling Rwy 21 NA at night. Rwy 3 helicopter visibility reduction below ¼ SM NA.

MISSED APPROACH: Climb to 3000 direct JEGUD and hold.

HBI AWOS-3 119.275	FAYETTEVILLE APP CON 127.8 343.725	UNICOM 122.8 (CTAF) 0
------------------------------	--	---------------------------------



CATEGORY	A	B	C	D
LP MDA	1060-1	443 (500-1)		NA
LNAV MDA	1080-1	463 (500-1)		NA
CIRCLING	1240-1 607 (700-1)	1340-1 707 (800-1)		NA

SE-2, 22 FEB 2024 to 21 MAR 2024

SE-2, 22 FEB 2024 to 21 MAR 2024