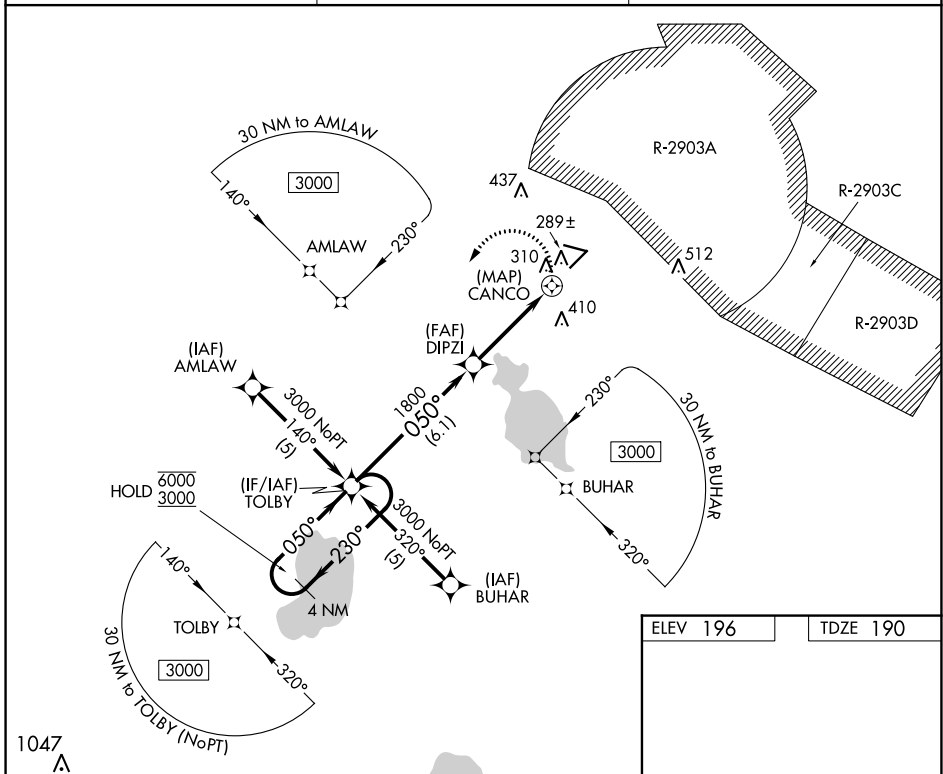


APP CRS	Rwy Idg	<b>5046</b>
<b>050°</b>	TDZE	<b>190</b>
	Apt Elev	<b>196</b>

# RNAV (GPS) RWY 5

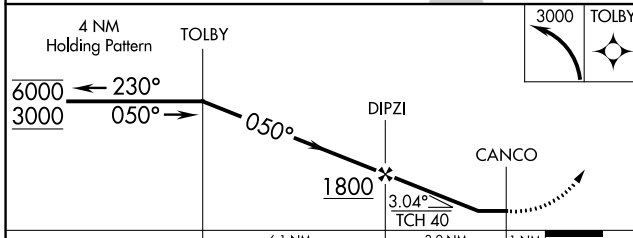
KEYSTONE HEIGHTS (42J)

RNP APCH.		MISSED APPROACH: Climbing left turn to 3000 direct TOLBY and hold.
<p><b>▼</b> Circling to Rwy 11, 23, 29 NA at night. Circling NA for Cats B and C northeast of Rwy 11-29. Rwy 5 helicopter visibility reduction below 3/4 SM NA.</p> <p><b>▲</b> NA When local altimeter setting not received, use Gainesville altimeter setting and increase all MDAs 60 feet.</p>		
AWOS-3 <b>124.275</b>	JACKSONVILLE APP CON <b>118.175 338.25</b>	UNICOM <b>122.7 (CTAF) 0</b>

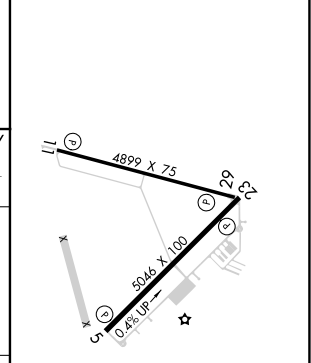


SE-3, 22 FEB 2024 to 21 MAR 2024

SE-3, 22 FEB 2024 to 21 MAR 2024



ELEV 196	TDZE 190
----------	----------



CATEGORY	A	B	C	D
LNVA MDA	600-1¼ 410 (500-1¼)			NA
CIRCLING	620-1¼ 424 (500-1¼)	660-1¼ 464 (500-1¼)	720-1½ 524 (600-1½)	NA

REIL Rws 5, 11 and 23 0  
MIRL Rwy 5-23 0  
HIRL Rwy 11-29 0