

WAAS <b>CH 69434</b> <b>W18A</b>	APP CRS <b>177°</b>	Rwy Idg TDZE Apt Elev	<b>4001</b> <b>793</b> <b>793</b>
--	------------------------	-----------------------------	---

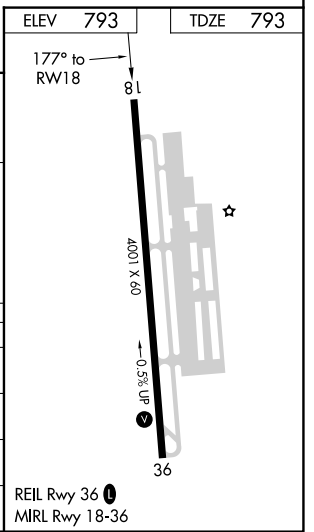
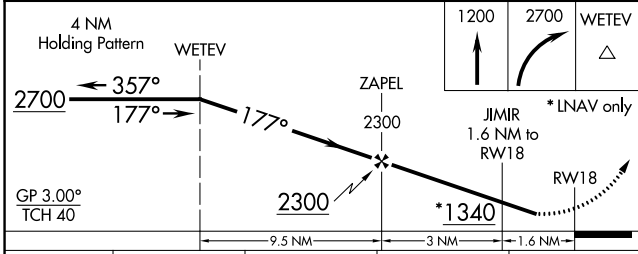
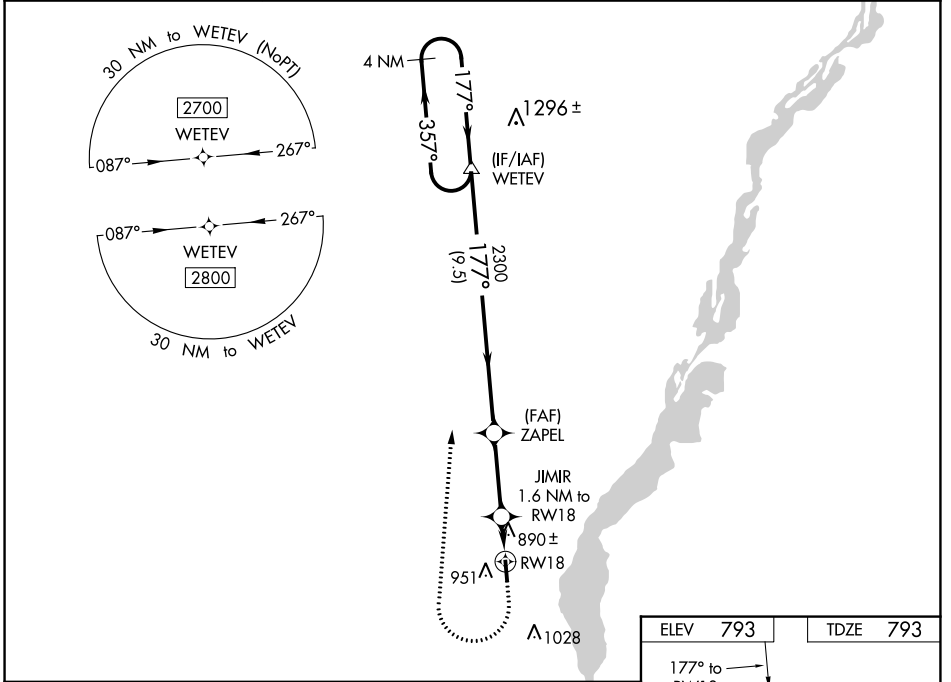
# RNAV (GPS) RWY 18

MOUNT HAWLEY AUXILIARY (3MY)

**⚠ NA** Circling to Rwy 36 NA at night. DME/DME RNP-0.3 NA. Baro-VNAV NA.  
 Use General Downing-Peoria Intl altimeter setting, when not received, use Lacon  
 altimeter setting: increase LPV DA to 1112 feet and all visibilities 1/8 mile, increase  
 LNAV/VNAV DA to 1228 feet and all visibilities 1/8 mile; increase all MDAs 40 feet  
 and visibility Cat C 1/8 SM. Rwy 18 helicopter visibility reduction below 1 SM NA.

**MISSED APPROACH:**  
 Climb to 1200 then climbing right turn to 2700 direct WETEVE and hold.

PIA ASOS <b>126.1 282.2</b>	SAINT LOUIS APP CON <b>125.8 269.2</b>	CLINC DEL <b>121.6</b>	UNICOM <b>122.7 (CTAF) 0</b>
--------------------------------	---	---------------------------	---------------------------------



CATEGORY	A	B	C	D
LPV DA	1082-1¼	289 (300-1¼)		NA
LNAV/VNAV DA	1198-1⅜	405 (500-1⅜)		NA
LNAV MDA	1180-1	387 (400-1)	1180-1⅛ 387 (400-1⅛)	NA
<b>C</b> CIRCLING	1360-1	567 (600-1)	1420-1¾ 627 (700-1¾)	NA

EC-3, 22 FEB 2024 to 21 MAR 2024

EC-3, 22 FEB 2024 to 21 MAR 2024