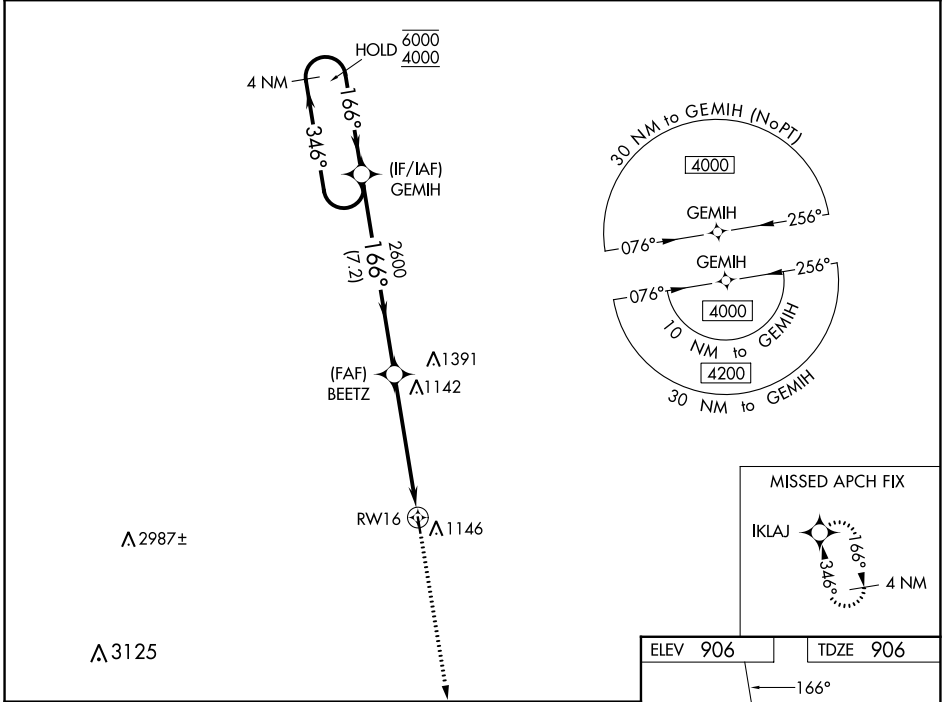


WAAS CH 86837 W16A	APP CRS 166°	Rwy Idg TDZE Apt Elev	3301 906 906
---------------------------------	------------------------	-----------------------------	---

RNAV (GPS) RWY 16

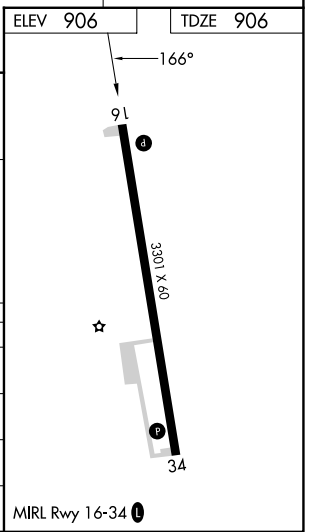
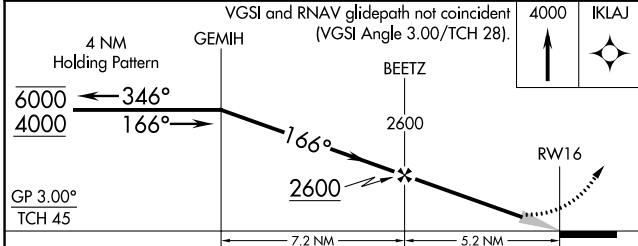
HILLSBORO MUNI (3H4)

RNP APCH.		MISSED APPROACH: Climb to 4000 direct IKLAJ and hold, continue climb-in-hold to 4000.
▼ ▲ NA	Baro-VNAV NA. Use Fargo altimeter setting.	
FAR ASOS 124.5 379.2	FARGO APP CON 120.4 377.15	CTAF 122.9 0



NC-1, 22 FEB 2024 to 21 MAR 2024

NC-1, 22 FEB 2024 to 21 MAR 2024



CATEGORY	A	B	C	D
LPV DA	1222-1 316 (400-1)			NA
LNAV/VNAV DA	1255-1 349 (400-1)			NA
LNAV MDA	1520-1	614 (700-1)	1520-1 $\frac{3}{4}$ 614 (700-1 $\frac{3}{4}$)	NA
CIRCLING	1520-1	614 (700-1)	1520-1 $\frac{3}{4}$ 614 (700-1 $\frac{3}{4}$)	NA

WAAS CH 81937 W34A	APP CRS 346°	Rwy Idg TDZE Apt Elev	3301 906 906
--	------------------------	-----------------------------	---

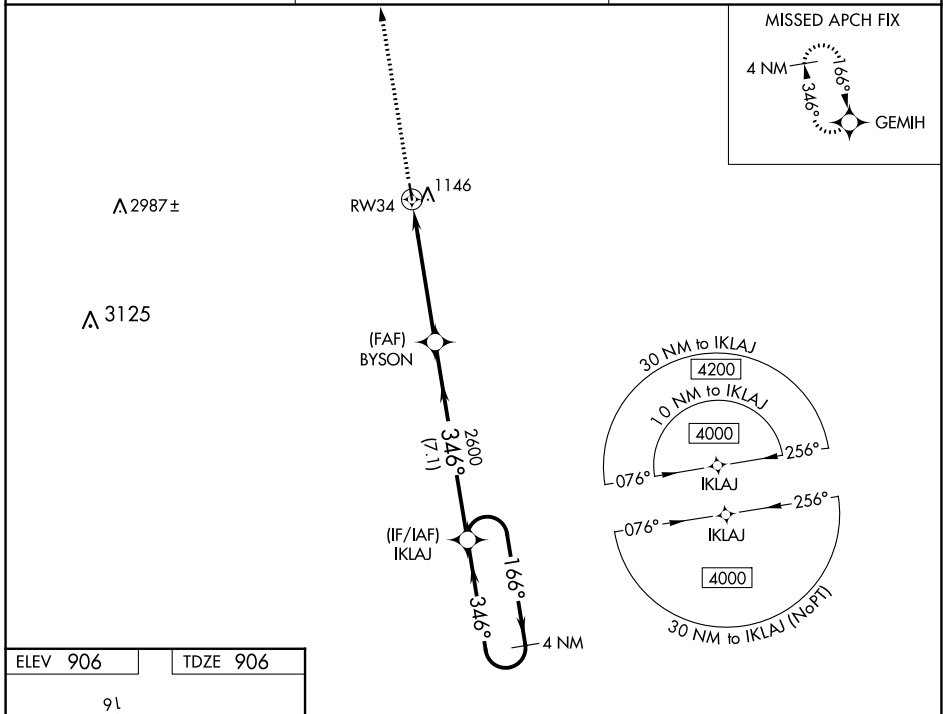
RNAV (GPS) RWY 34

HILLSBORO MUNI (3H4)

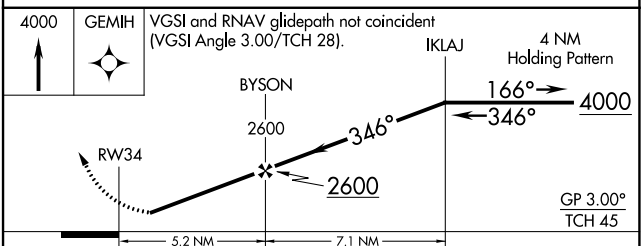
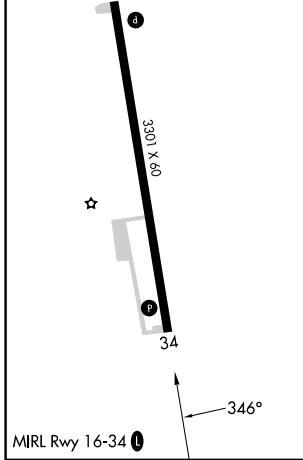
▼ Use Fargo altimeter setting. DME/DME RNP-0.3 NA.
▲ NA Night Landing: Rwy 34 NA. Helicopter visibility reduction below 1 SM NA.

MISSED APPROACH: Climb to 4000 direct GEMIH and hold.

FAR ASOS 124.5 379.2	FARGO APP CON 120.4 377.15	CTAF 122.90
--------------------------------	--------------------------------------	-----------------------



ELEV 906	TDZE 906
----------	----------



CATEGORY	A	B	C	D
LPV DA	1222-1 316 (400-1)			NA
LNAV/VNAV DA	1362-1½ 456 (500-1½)			NA
LNAV MDA	1480-1 574 (600-1)		1480-1½ 574 (600-1½)	NA
C CIRCLING	1520-1 614 (700-1)		1520-1¾ 614 (700-1¾)	NA

NC-1, 22 FEB 2024 to 21 MAR 2024

NC-1, 22 FEB 2024 to 21 MAR 2024