

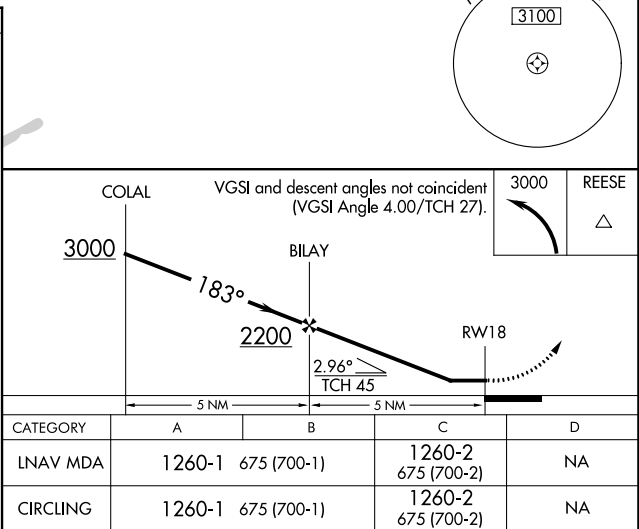
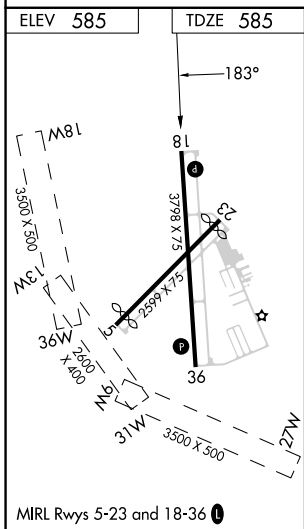
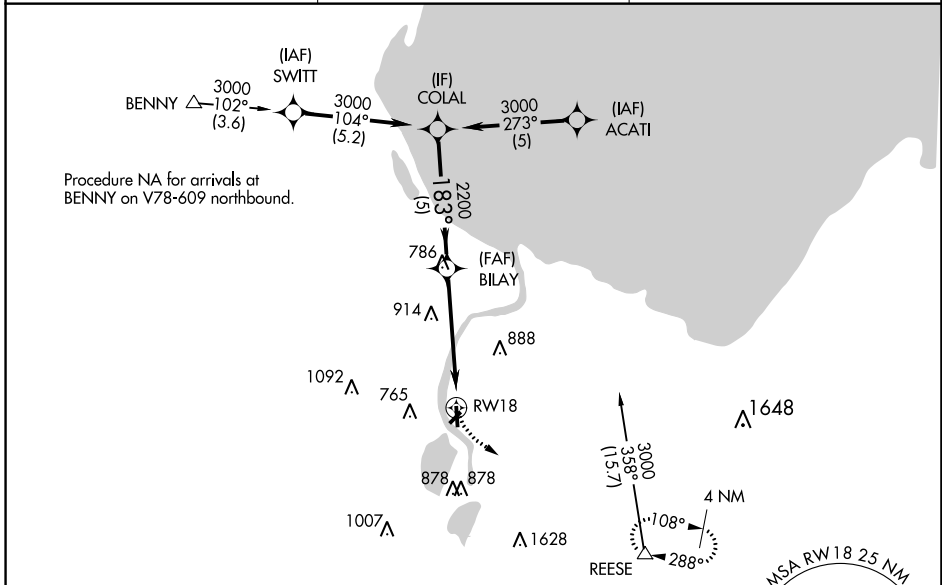
APP CRS	Rwy Idg	3798
183°	TDZE	585
	Apt Elev	585

RNAV (GPS) RWY 18

JAMES CLEMENTS MUNI (3CM)

RNP APCH.	<p>MISSED APPROACH: Climbing left turn to 3000 direct REESE and hold.</p>
<p>▽ Circling NA to Rwys 18W, 36W, 13W, 31W, 9W and 27W. Circling NA southeast of Rwys 23 and 36. Rwy 18 helicopter visibility reduction below 1 SM NA. Use Saginaw County H W Browne altimeter setting. Straight-in Rwy 18 NA at night, Circling Rwy 18, 23, 36 NA at night.</p>	

HYX AWOS-3PT 118.325	GREAT LAKES APP CON ★ 120.95 235.625	UNICOM 122.725 (CTAF) ①
--------------------------------	--	-----------------------------------



EC-1, 22 FEB 2024 to 21 MAR 2024

EC-1, 22 FEB 2024 to 21 MAR 2024