

LOUISVILLE, GEORGIA

AL-9837 (FAA)

23222

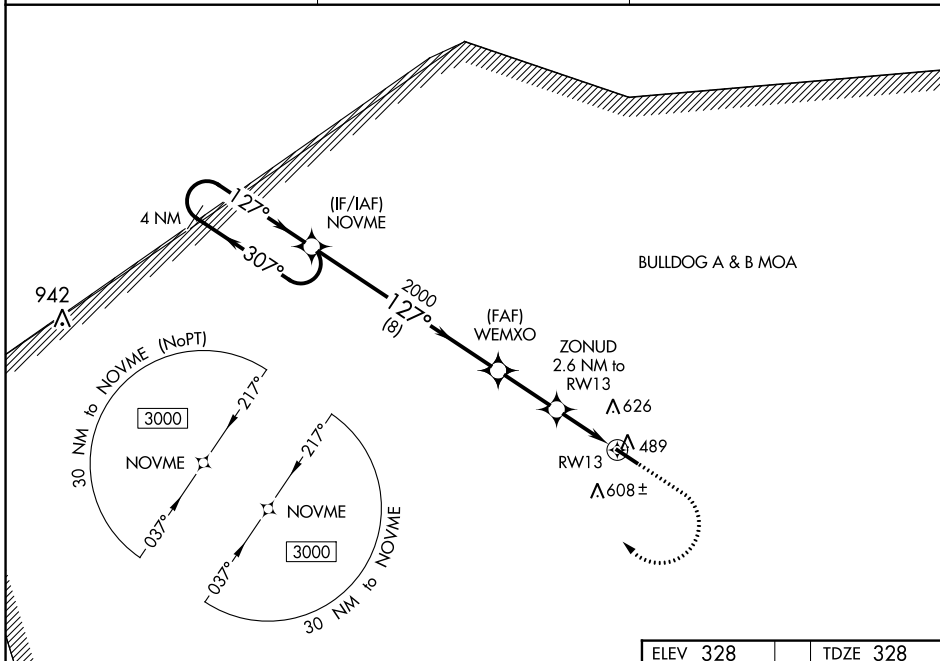
WAAS CH 56539 W13A	APP CRS 127°	Rwy Idg TDZE Apt Elev	5002 328 328
----------------------------------------	------------------------	-----------------------------	-----------------------------------------

RNAV (GPS) RWY 13

LOUISVILLE MUNI (2J3)

RNP APCH GPS.	MISSED APPROACH: Climb to 1000 then climbing right turn to 3000 direct NOVME and hold.
For uncompensated Baro-VNAV systems, LNAV/VNAV NA below -15°C or above 54°C. Rwy 13 helicopter visibility reduction below 3/4 SM NA.	

AWOS-3PT 119.35	AUGUSTA APP CON 126.8 270.3	CTAF 122.9
---------------------------	---------------------------------------	----------------------



SE-4, 22 FEB 2024 to 21 MAR 2024

SE-4, 22 FEB 2024 to 21 MAR 2024

VGSi and RNAV glidepath not coincident (VGSi Angle 3.83/TCH 23).		1000	3000	NOVME
4 NM Holding Pattern				
GP 3.00° TCH 45				
CATEGORY	A	B	C	D
LPV DA	578-1		250 (300-1)	
LNAV/VNAV DA	768-1½		440 (500-1½)	
LNAV MDA	800-1	472 (500-1)	800-1½ 472 (500-1½)	800-1¾ 472 (500-1¾)
CIRCLING	840-1 512 (600-1)	980-1 652 (700-1)	980-1¾ 652 (700-1¾)	980-2 652 (700-2)
MIRL Rwy 13-31				

LOUISVILLE, GEORGIA
Orig-B 10AUG23

32°59'N-82°23'W

RNAV (GPS) RWY 13

LOUISVILLE MUNI (2J3)