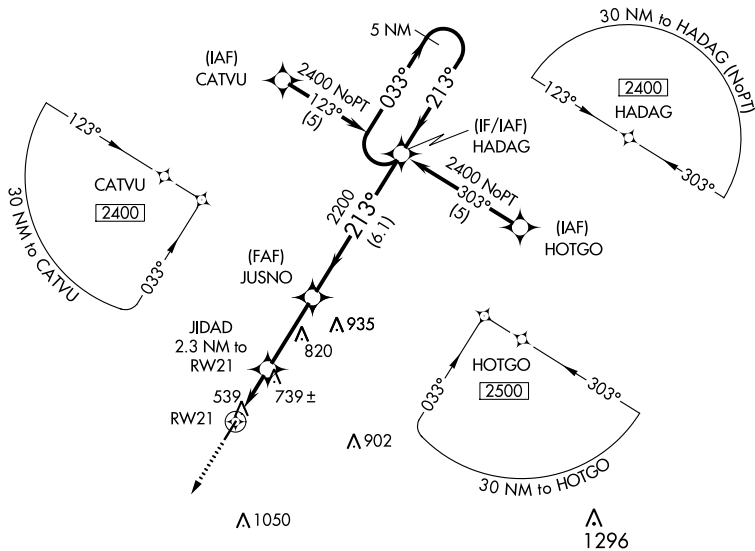


APP CRS	Rwy Idg	4400
213°	TDZE	467
	Apt Elev	467

RNAV (GPS) RWY 21

RIPLEY (25M)

RNP APCH.		MISSED APPROACH: Climb to 2500 direct CEDAS and hold.
<p>▼ Use Corinth altimeter setting; when not received, use Tupelo altimeter setting and increase all MDA 40 feet, and increase LNAV Cat C visibility 1/4 mile. Procedure NA at night. Rwy 21 helicopter visibility reduction below 1 SM NA.</p>		
CRX AWOS-3PT 118.675	MEMPHIS CENTER 135.9 260.6	UNICOM 122.8 (CTAF) 0



SC-4, 22 FEB 2024 to 21 MAR 2024

SC-4, 22 FEB 2024 to 21 MAR 2024

ELEV 467	TDZE 467
213° to RWY 21	
<p>2500</p> <p>↑ CEDAS</p> <p>VGSI and descent angles not coincident. (VGSI Angle 3.50/TCH 16)</p> <p>5 NM Holding Pattern</p> <p>JIDAD 2.3 NM to RWY 21</p> <p>JUSNO</p> <p>≤ 3.04° TCH 40</p> <p>2200</p> <p>1220</p> <p>2.3 NM</p> <p>2.9 NM</p> <p>6.1 NM</p>	<p>213°</p> <p>033°</p> <p>2400</p> <p>213°</p>
CATEGORY	A B C D
LNAV MDA	1060-1 593 (600-1) 1060-1½ 593 (600-1½) NA

