

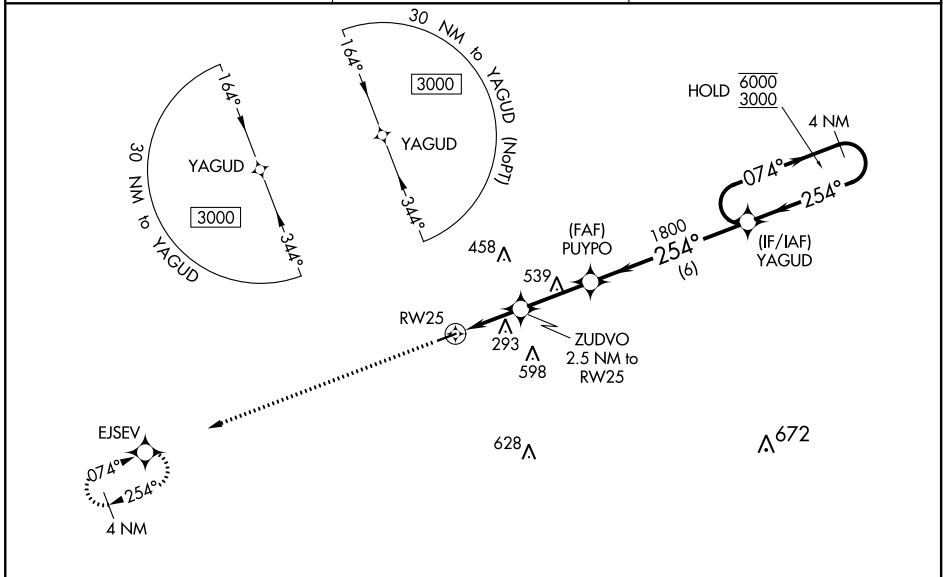
WAAS CH 58232 W25A	APP CRS 254°	Rwy Idg TDZE Apt Elev	4005 103 103
--	------------------------	-----------------------------	---

RNAV (GPS) RWY 25

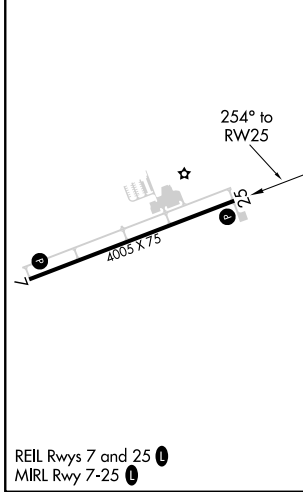
SUWANNEE COUNTY (24J)

RNP APCH.	<p>⚠ Procedure NA at night. Rwy 25 helicopter visibility reduction below 1 SM NA. For uncompensated Baro-VNAV systems, LNAV/VNAV NA below -15°C or above 54°C.</p>	<p>MISSED APPROACH: Climb to 3000 direct EJSEV and hold.</p>

AWOS-3 118.225	JACKSONVILLE CENTER 125.375 254.325	UNICOM 122.8 (CTAF) 1
--------------------------	---	---------------------------------



ELEV 103	TDZE 103
----------	----------



3000	EJSEV	4 NM Holding Pattern		
*LNAV only.				
ZUDVO 2.5 NM to RW25	PUYPO 1800	YAGUD		
RW25	1800	074° → 6000 ← 254° 3000		
2.5 NM	2.7 NM	6 NM		
GP 3.00° TCH 52				
CATEGORY	A	B	C	D
LPV DA	353-1	250 (300-1)		NA
LNAV/VNAV DA	536-1½	433 (500-1½)		NA
LNAV MDA	560-1	457 (500-1)		NA
C CIRCLING	560-1 457 (500-1)	600-1 497 (500-1)		NA

REIL Rwy 7 and 25 **1**
MIRL Rwy 7-25 **1**

LIVE OAK, FLORIDA
Orig-C 21MAY20

30°18'N-83°01'W

RNAV (GPS) RWY 25

SE-3, 20 MAY 2021 to 17 JUN 2021

WAAS CH 63132 W07A	APP CRS 074°	Rwy Idg TDZE Apt Elev	4005 102 103
--	------------------------	-----------------------------	---

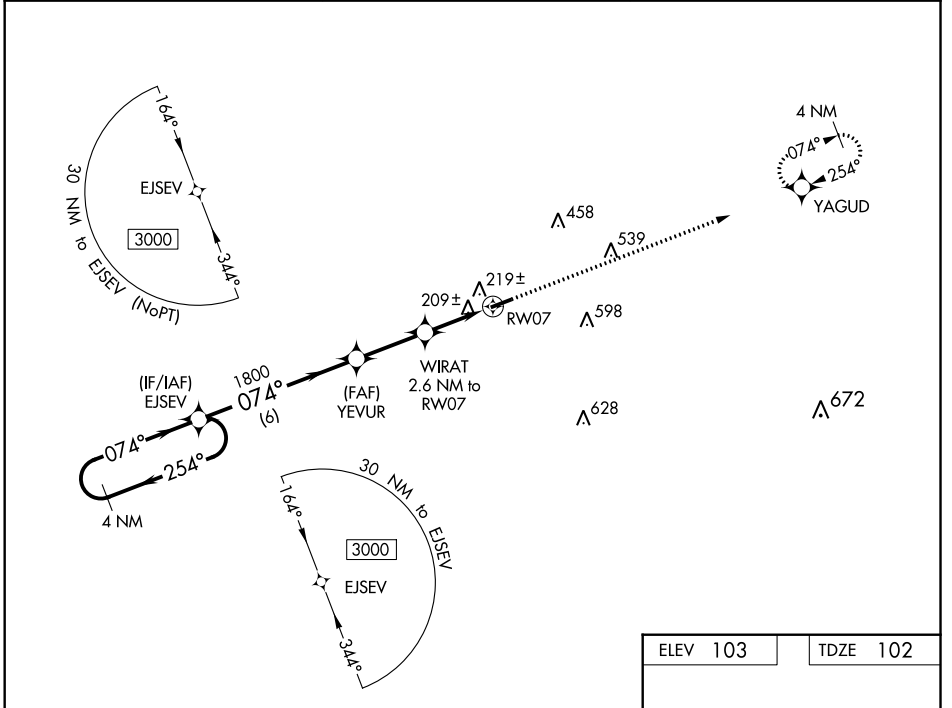
RNAV (GPS) RWY 7

SUWANNEE COUNTY (24J)

▽ When local altimeter setting not received, use Perry altimeter setting and increase all MDAs 100 feet. DME/DME RNP-0.3 NA.
△ NA Helicopter visibility reduction below 1 SM NA.
 Procedure NA at night.

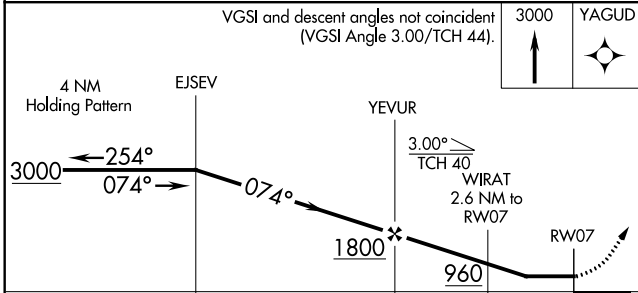
MISSED APPROACH: Climb to 3000 direct YAGUD and hold.

AWOS-3 118.225	JACKSONVILLE CENTER 125.375 254.325	UNICOM 122.8 (CTAF) 0
--------------------------	---	---------------------------------



SE-3, 20 MAY 2021 to 17 JUN 2021

SE-3, 20 MAY 2021 to 17 JUN 2021



ELEV 103	TDZE 102
----------	----------

3D perspective view of the runway (RW07) and taxiway (TW01). The runway length is 4005 x 75 feet. The diagram shows the runway orientation and the location of the taxiway.

REIL Rwy 7 and 25 **0**
MIRL Rwy 7-25 **0**

CATEGORY	A	B	C	D
LP MDA	460-1	358 (400-1)		NA
LNVA MDA	480-1	378 (400-1)		NA
C CIRCLING	560-1 457 (500-1)	600-1 497 (500-1)		NA