

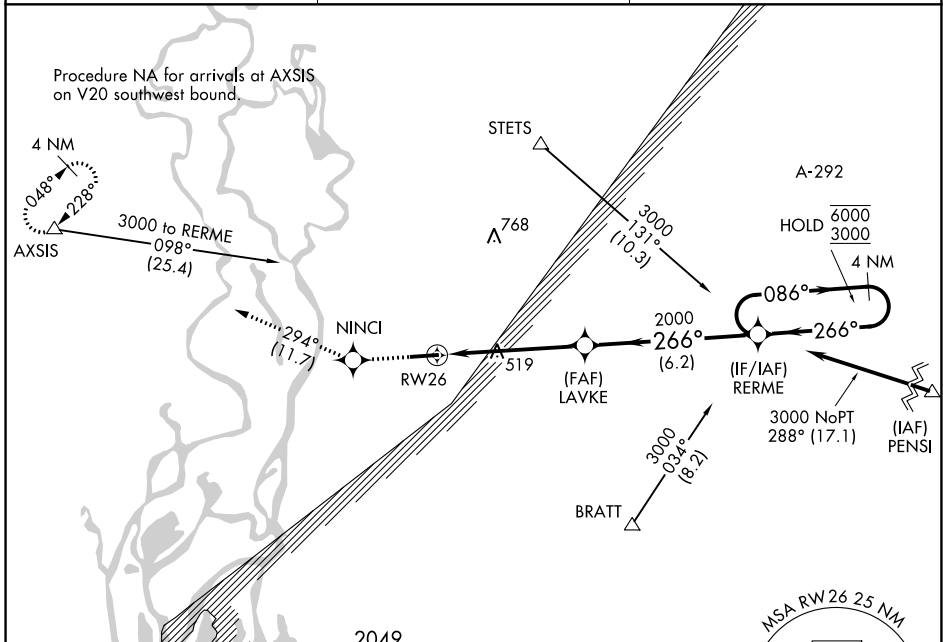
APP CRS	Rwy Idg	5500
266°	TDZE	248
	Apt Elev	248

RNAV (GPS) RWY 26

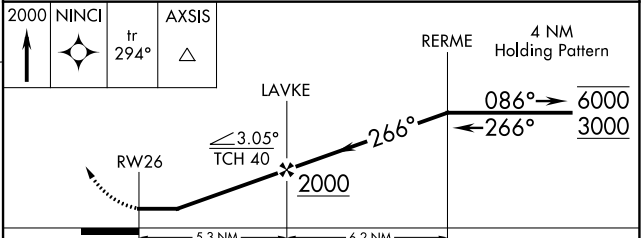
BAY MINETTE MUNI (1R8)

RNP APCH.	MISSED APPROACH: Climb to 2000 direct NINCI and on track 294° to AXIS and hold.
<p>▼ Rwy 26 helicopter visibility reduction below 1 SM NA.</p> <p>▲ Straight-in Rwy 26 NA at night, Circling Rwy 8, 26 NA at night.</p>	

AWOS-3PT 121.125	MOBILE APP CON ★ 118.5 269.3	UNICOM 122.8 (CTAF) 0
----------------------------	----------------------------------------	---------------------------------



ELEV	248	TDZE	248
------	-----	------	-----



CATEGORY	A	B	C	D
LNAV MDA	820-1	572 (600-1)	820-1½ 572 (600-1½)	NA
<input checked="" type="checkbox"/> CIRCLING	820-1	572 (600-1)	880-1¾ 632 (700-1¾)	NA

SE-4, 22 FEB 2024 to 21 MAR 2024

SE-4, 22 FEB 2024 to 21 MAR 2024

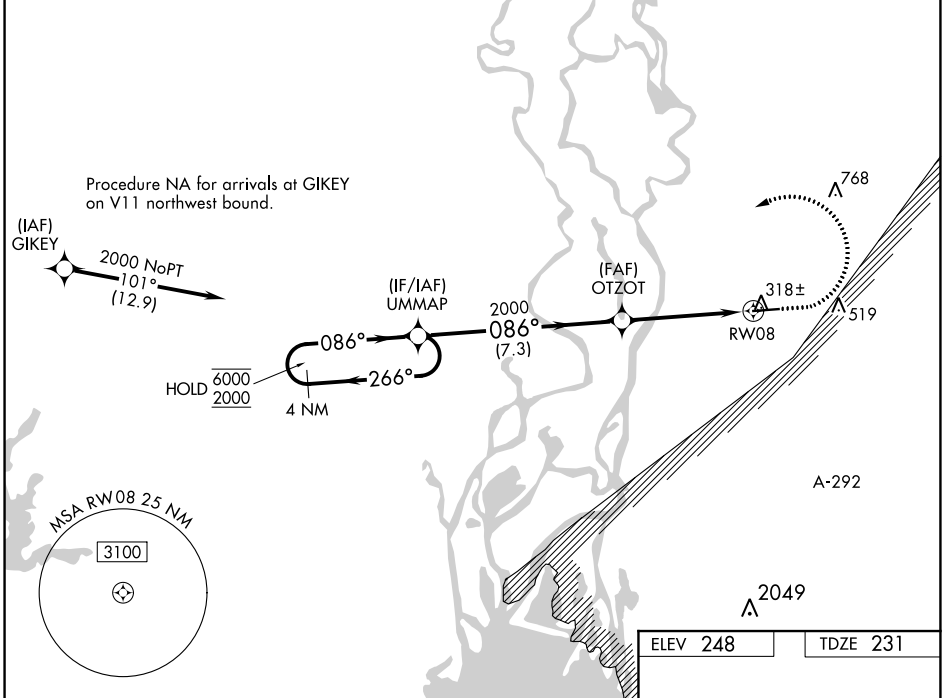
WAAS CH 56620 W08A	APP CRS 086°	Rwy Idg TDZE Apt Elev	5500 231 248
----------------------------------------	------------------------	-----------------------------	-----------------------------------------

RNAV (GPS) RWY 8

BAY MINETTE MUNI (1R8)

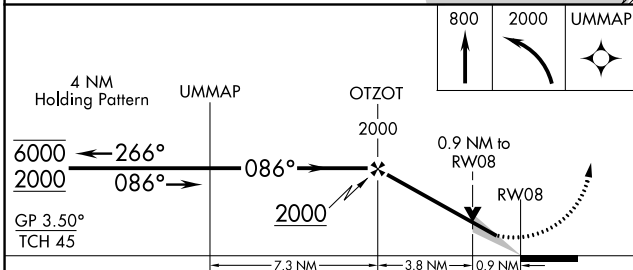
RNP APCH.	MISSED APPROACH: Climb to 800 then climbing left turn to 2000 direct UMMAP and hold.
<p>▼ For uncompensated Baro-VNAV systems, LNAV/VNAV NA below -1.5°C or above 54°C. Circling Rwy 26 NA at night.</p>	

AWOS-3PT 121.125	MOBILE APP CON ★ 118.5 269.3	UNICOM 122.8 (CTAF) 0
----------------------------	----------------------------------------	---------------------------------

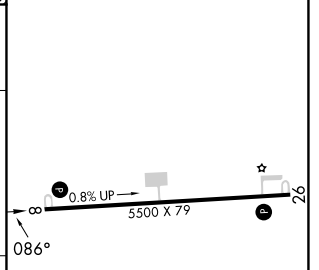


SE-4, 22 FEB 2024 to 21 MAR 2024

SE-4, 22 FEB 2024 to 21 MAR 2024



ELEV 248	TDZE 231
----------	----------



CATEGORY	A	B	C	D
LPV DA		501-1 270 (300-1)		NA
LNAV/VNAV DA		501-1 270 (300-1)		NA
LNAV MDA		580-1 349 (400-1)		NA
CIRCLING	660-1 412 (500-1)	780-1 532 (600-1)	880-1¾ 632 (700-1¾)	NA

REIL Rwy 8
MIRL Rwy 8-26 0