

WAAS CH 93736 W26A	APP CRS 260°	Rwy Idg TDZE 1476 Apt Elev 1476	2922
--	------------------------	---	-------------

RNAV (GPS) RWY 26

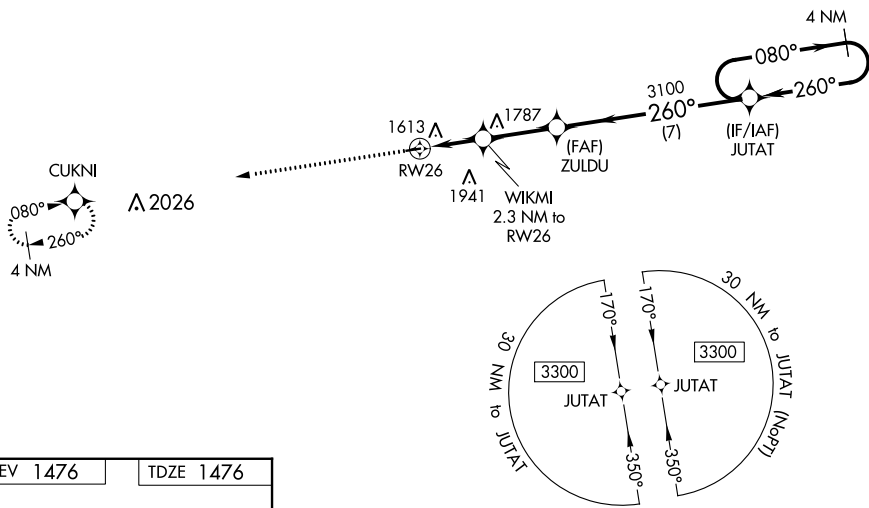
MOUNTAIN GROVE MEML (1M0)

▽ DME/DME RNP-0.3 NA. Procedure NA at night. Use Fort Leonard Wood altimeter setting, when not received use Springfield altimeter setting and increase all MDA 20 feet. Helicopter visibility reduction below 1 SM NA.

MISSED APPROACH: Climb to 3300 direct CUKNI and hold.

KANSAS CITY CENTER
128.35 284.675

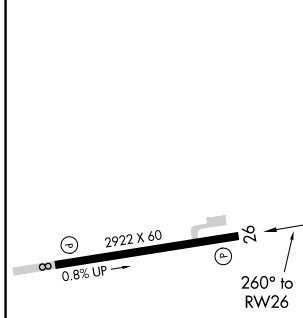
CTAF
122.9



NC-3, 22 FEB 2024 to 21 MAR 2024

NC-3, 22 FEB 2024 to 21 MAR 2024

ELEV 1476	TDZE 1476
------------------	------------------



3300		CUKNI		Visual Segment - Obstacles.			
↑		✧					
WIKMI 2.3 NM to RW26		ZULDU		JUTAT		4 NM Holding Pattern	
RW26		3100		080° →		← 260° 3300	
2240		7 NM					
CATEGORY	A	B		C	D		
LP MDA	2120-1	644 (700-1)		NA			
LNAV MDA	2160-1	684 (700-1)		NA			
C CIRCLING	2160-1 684 (700-1)	2240-1 764 (800-1)		NA			

MIRL Rwy 8-26 **Ⓛ**
REIL Rwy 8 and 26 **Ⓛ**

APP CRS	Rwy Idg	2922
080°	TDZE	1476
	Apt Elev	1476

RNAV (GPS) RWY 8

MOUNTAIN GROVE MEML (1M0)

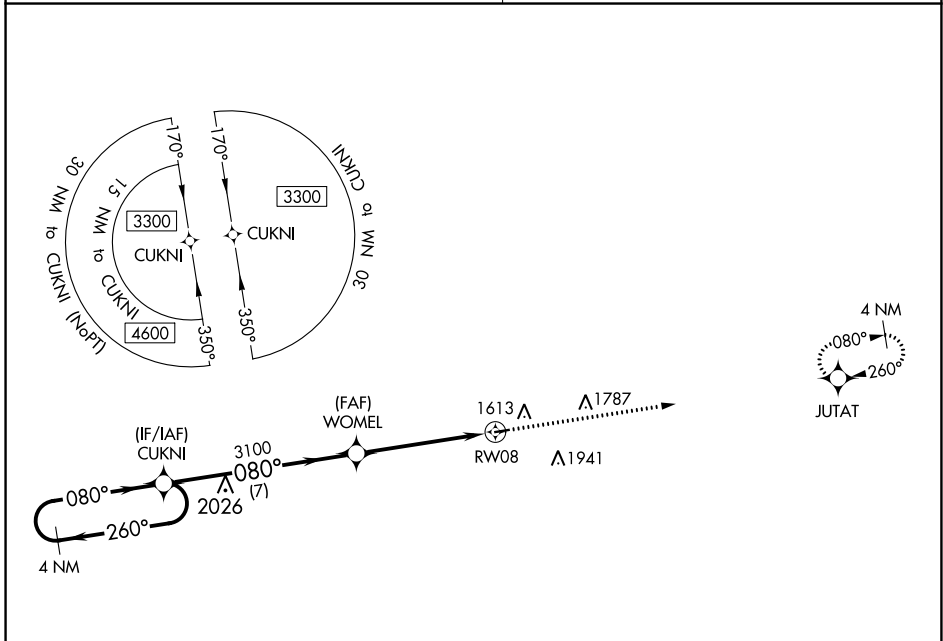
▼ DME/DME RNP-0.3 NA. Procedure NA at night. Use Fort Leonard Wood altimeter setting, when not received use Springfield altimeter setting and increase all MDA 20 feet. Helicopter visibility reduction below 1 SM NA.

▲ NA

MISSED APPROACH: Climb to 3300 direct JUTAT and hold.

KANSAS CITY CENTER
128.35 284.675

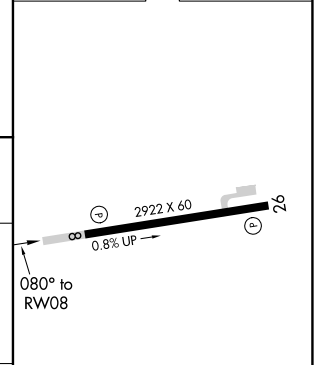
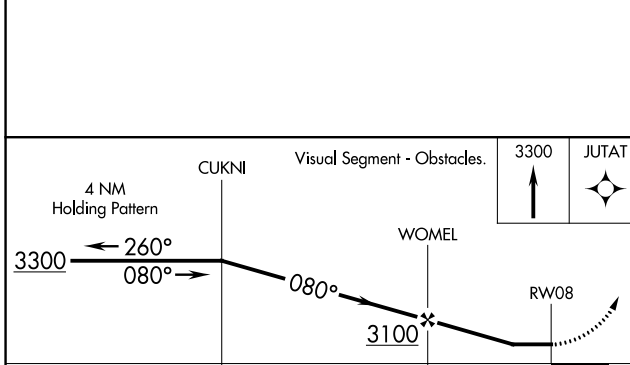
CTAF
122.90



NC-3, 22 FEB 2024 to 21 MAR 2024

NC-3, 22 FEB 2024 to 21 MAR 2024

ELEV 1476	TDZE 1476
-----------	-----------



CATEGORY	A	B	C	D
LNVA MDA	2140-1	664 (700-1)		NA
C CIRCLING	2140-1 664 (700-1)	2240-1 764 (800-1)		NA

MIRL Rwy 8-26 **0**
REIL Rws 8 and 26 **0**