

APP CRS <b>311°</b>	Rwy Idg <b>3004</b>
	TDZE <b>1167</b>
	Apt Elev <b>1169</b>

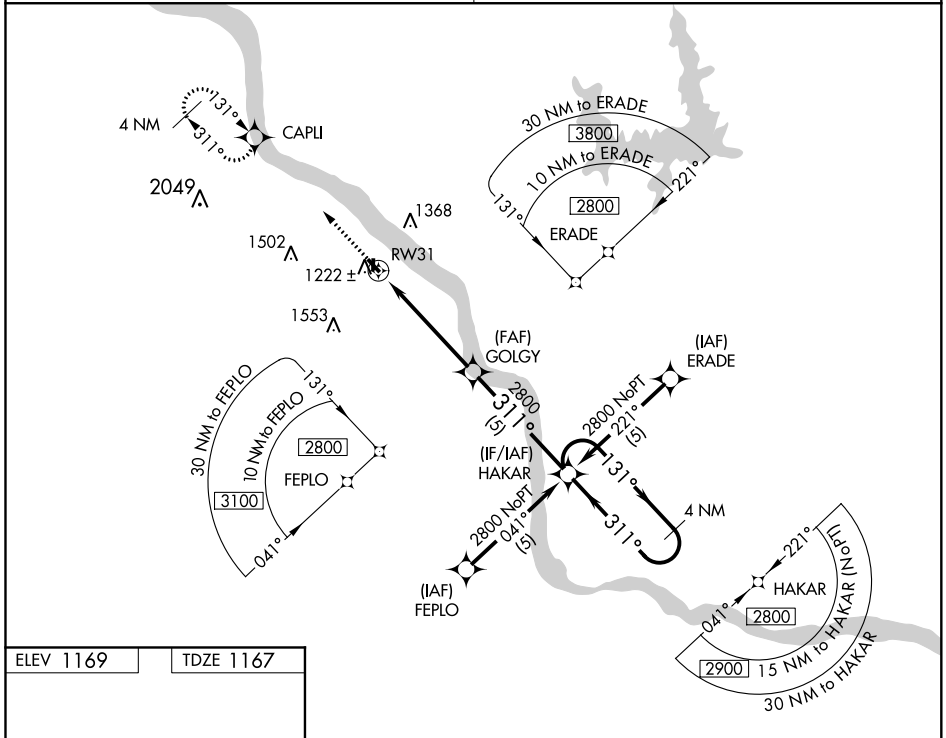
# RNAV (GPS) RWY 31

DAVID JAY PERRY (1K4)

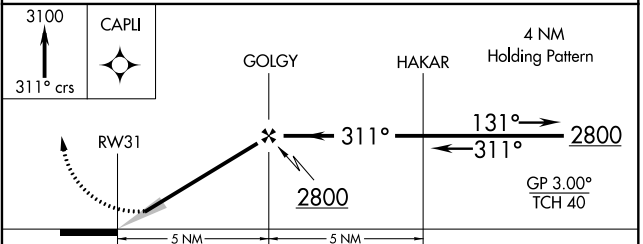
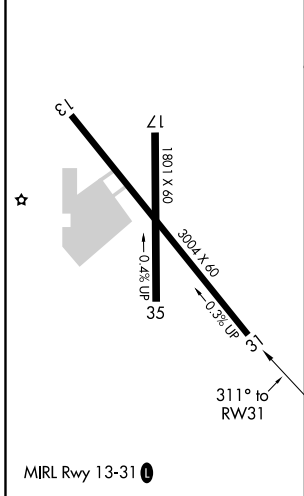
**▽** Use Will Rogers World altimeter setting. GPS or RNP-0.3 required.  
**⚠** NA DME/DME RNP-0.3 NA. Baro-VNAV NA. Rwy 13, 17, 31, 35 helicopter visibility reduction below 1 SM NA. Procedure NA at night.

MISSED APPROACH: Climb to 3100 via 311° course to CAPLI and hold.

OKE CITY APP CON <b>120.45 288.325</b>	UNICOM <b>122.7 (CTAF) 0</b>
---	---------------------------------



ELEV 1169	TDZE 1167
-----------	-----------



CATEGORY	A	B	C	D
GLS PA DA	NA			
LNAV/VNAV DA	1520-1¼ 353 (400-1¼)			NA
LNAV MDA	1580-1	413 (500-1)	1580-1½ 413 (500-1½)	NA
CIRCLING	1660-1¼ 491 (500-1¼)	1700-1¼ 531 (600-1¼)	1700-1½ 531 (600-1½)	NA

SC-1, 15 JUL 2021 to 12 AUG 2021

SC-1, 15 JUL 2021 to 12 AUG 2021