

WAAS CH <b>82724</b> <b>W02A</b>	APP CRS <b>019°</b>	Rwy Idg TDZE Apt Elev	<b>3270</b> <b>1789</b> <b>1789</b>
--	------------------------	-----------------------------	---

# RNAV (GPS) RWY 2

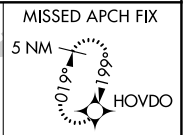
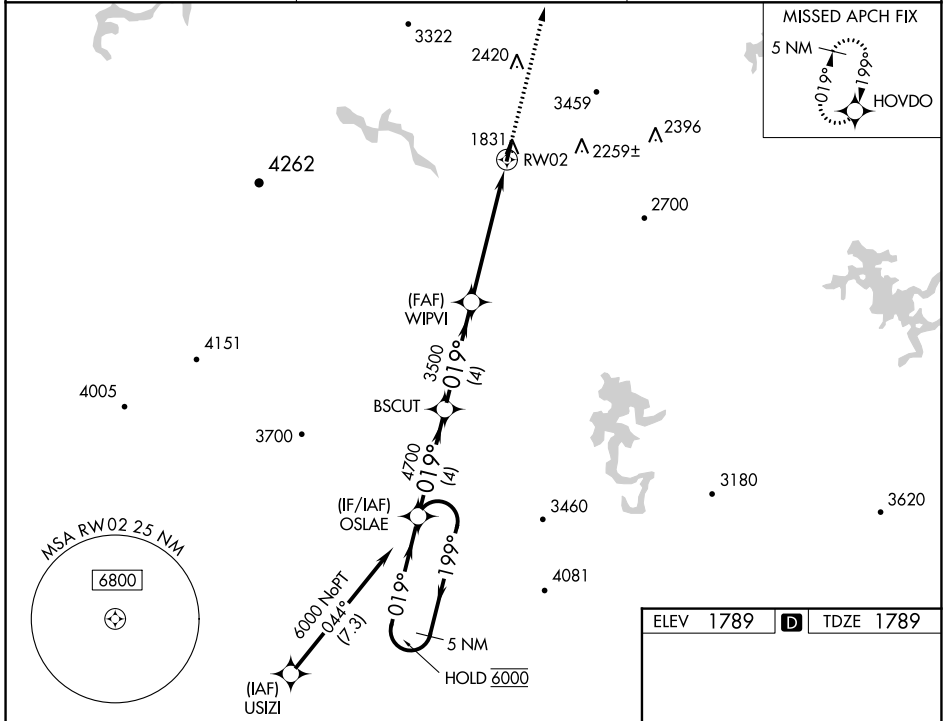
MARTIN CAMPBELL FLD (1A3)

RNP APCH - GPS.

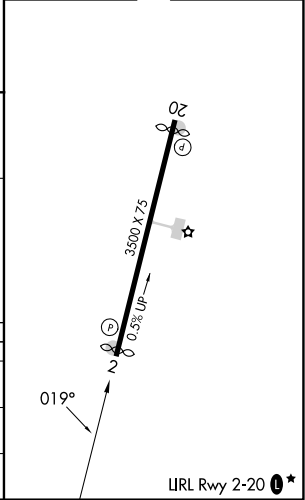
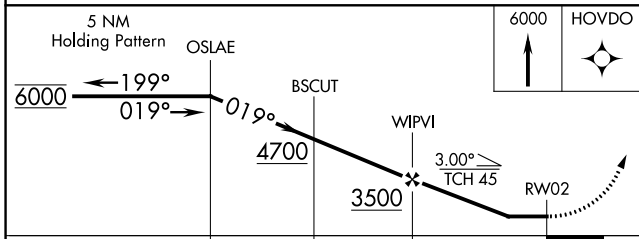
Procedure NA at night. Rwy 2 helicopter visibility reduction below 1 SM NA. Circling NA for Cat C east of Rwy 2-20. Use Andrews altimeter setting, when not received, use Dalton altimeter setting and increase all MDAs 160 feet, LNAV visibility Cat B/C ½ SM and LP visibility Cat B/C ⅘ SM.

MISSED APPROACH: Climb to 6000 direct HOVDO and hold, continue climb in hold to 6000.

RHP AWOS-3 <b>119.675</b>	ATLANTA CENTER <b>133.1 342.425</b>	CTAF <b>122.90*</b>
------------------------------	--	------------------------



ELEV 1789	D	TDZE 1789
-----------	---	-----------



CATEGORY	A	B	C	D
LP MDA	2460-1	671 (700-1)	2460-1⅞ 671 (700-1⅞)	NA
LNAV MDA	2500-1	711 (800-1)	2500-2 711 (800-2)	NA
CIRCLING	2900-1¼ 1111 (1200-1¼)	3040-1½ 1251 (1300-1½)	3080-3 1291 (1300-3)	NA

SE-1, 22 FEB 2024 to 21 MAR 2024

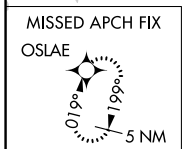
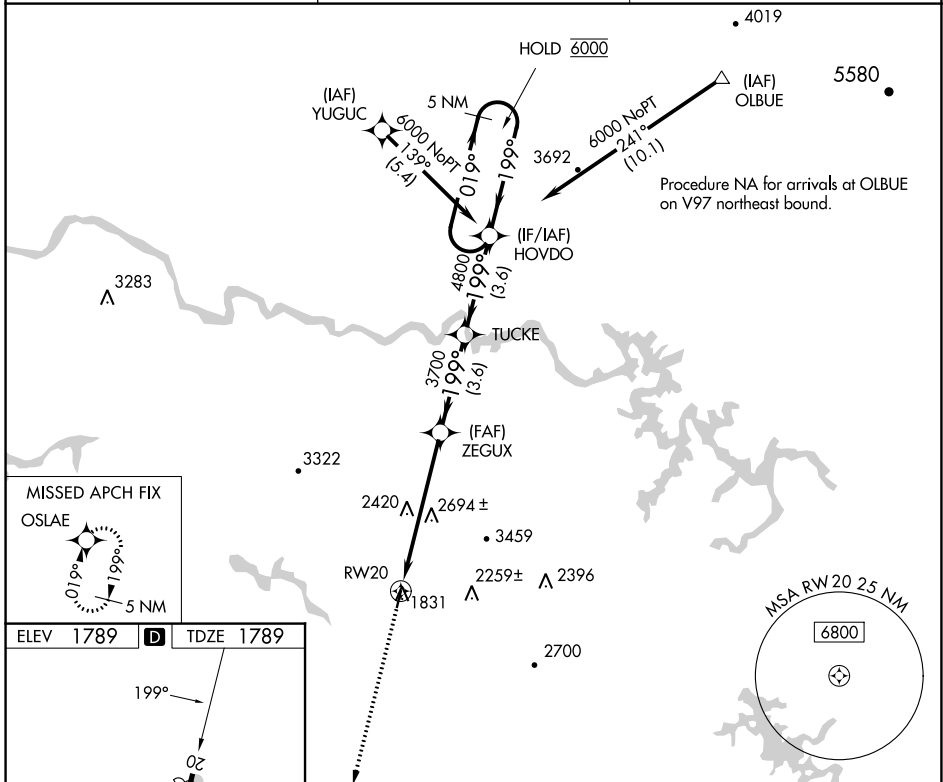
SE-1, 22 FEB 2024 to 21 MAR 2024

WAAS CH <b>86825</b> <b>W20A</b>	APP CRS <b>199°</b>	Rwy Idg TDZE Apt Elev	<b>3270</b> <b>1789</b> <b>1789</b>
--	------------------------	-----------------------------	---

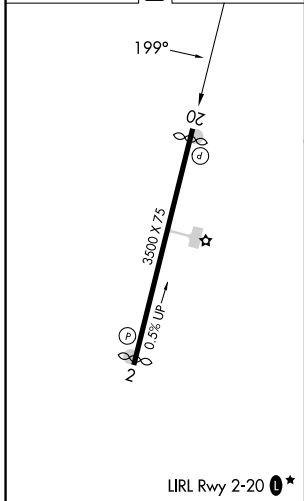
# RNAV (GPS) RWY 20

MARTIN CAMPBELL FLD (1A3)

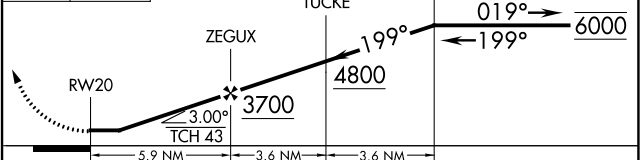
RNP APCH - GPS.		ATLANTA CENTER <b>133.1 342.425</b>		CTAF <b>122.90*</b>	
<p>Procedure NA at night. Rwy 20 helicopter visibility reduction below 1 SM NA.</p> <p>Use Andrews altimeter setting, when not received, use Dalton altimeter setting and increase all MDAs 160 feet.</p>		<p>MISSED APPROACH: Climb to 6000 direct OSLAE and hold, continue climb in hold to 6000.</p>			



ELEV 1789	<b>D</b>	TDZE 1789
-----------	----------	-----------



6000	OSLAE	VGSI and descent angles not coincident (VGSI Angle 4.00/TCH 43).	5 NM Holding Pattern
------	-------	--	----------------------



CATEGORY		A	B	C	D
LP	MDA	2960-1¼ 1171 (1200-1¼)	2960-1½ 1171 (1200-1½)	2960-3 1171 (1200-3)	NA
LNAV	MDA	3020-1¼ 1231 (1300-1¼)	3020-1½ 1231 (1300-1½)	3020-3 1231 (1300-3)	NA

SE-1, 22 FEB 2024 to 21 MAR 2024

SE-1, 22 FEB 2024 to 21 MAR 2024