

MAGEE, MISSISSIPPI

AL-9829 (FAA)

21084

WAAS CH <b>62835</b> <b>W18A</b>	APP CRS <b>180°</b>	Rwy Idg <b>3103</b> TDZE <b>555</b> Apt Elev <b>555</b>
--	------------------------	---

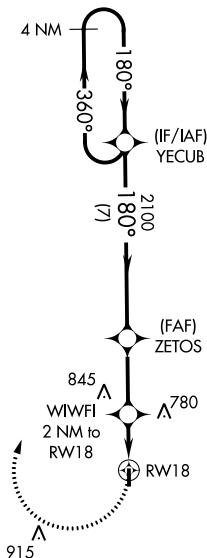
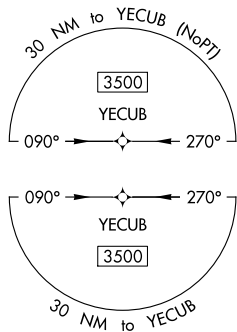
# RNAV (GPS) RWY 18

MAGEE MUNI (17M)

**▽** Use Brookhaven altimeter setting; when not received, use Jackson-Medgar Wiley Evers Intl altimeter setting. DME/DME RNP-0.3 NA. Procedure NA at night.  
**▲ NA** Rwy 18, 36 helicopter visibility reduction below 1 SM NA.

**MISSED APPROACH:** Climbing right turn to 3500 direct YECUB and hold.

1R7 AWOS-3P <b>118.125</b>	JAN ASOS <b>121.05</b>	MEMPHIS CENTER <b>125.975 307.275</b>	UNICOM <b>122.8 (CTAF) 0</b>
-------------------------------	---------------------------	--	---------------------------------

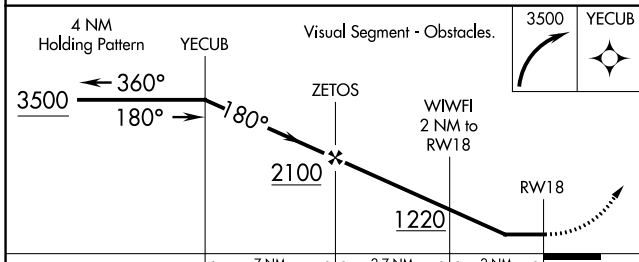


1677 **▲**

SC-4, 22 FEB 2024 to 21 MAR 2024

SC-4, 22 FEB 2024 to 21 MAR 2024

ELEV	555	TDZE	555



CATEGORY	A	B	C	D
LP MDA	1060-1	505 (600-1)	1060-1 $\frac{3}{8}$ 505 (600-1 $\frac{3}{8}$ )	NA
LNAV MDA	1080-1	525 (600-1)	1080-1 $\frac{1}{2}$ 525 (600-1 $\frac{1}{2}$ )	NA
<b>C</b> CIRCLING	1080-1 525 (600-1)	1160-1 605 (700-1)	1260-2 705 (800-2)	NA

MIRL Rwy 18-36 **0**

MAGEE, MISSISSIPPI  
Orig-A 25MAY17

31°52'N-89°48'W

# MAGEE MUNI (17M) RNAV (GPS) RWY 18