

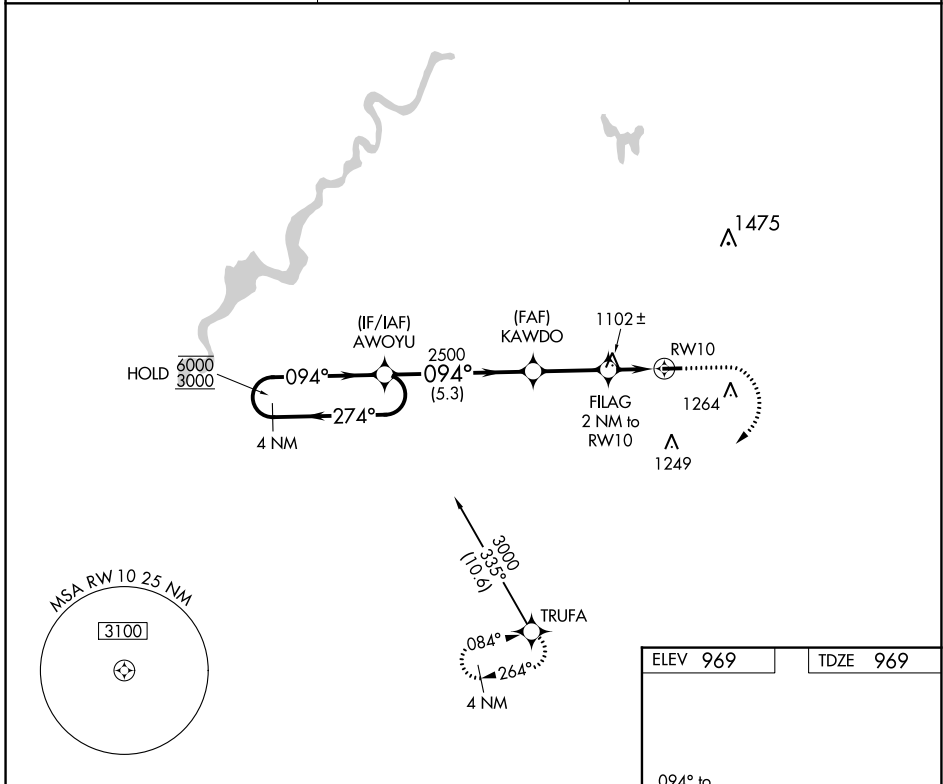
APP CRS	Rwy Idg	3499
094°	TDZE	969
	Apt Elev	969

RNAV (GPS) RWY 10

LAKEVIEW/GRIFFITH FLD (13C)

RNP APCH.	Procedure NA at night. Rwy 10 helicopter visibility reduction below 1 SM NA. Use Big Rapids altimeter setting.	MISSED APPROACH: Climb to 1800 then climbing right turn to 3000 direct TRUFA and hold.
⚠ NA		

RQB AWOS-3P 125.875	GREAT LAKES APP CON * 124.6 257.6	UNICOM 122.8 (CTAF)
-------------------------------	---	-------------------------------



4 NM Holding Pattern Visual Segment - Obstacles.		1800 ↑	3000 ↷	TRUFA △
AWOYU 6000 ← 274° 3000 → 094°		KAWDO 2500	FLAG 2 NM to RW10 1640	RW10 1264
5.3 NM		2.7 NM	2 NM	094° to RW10 3499 X 75 28
CATEGORY	A	B	C	D
LNVA MDA	1400-1	431 (500-1)	NA	
Ⓢ CIRCLING	1480-1 511 (600-1)	1580-1 611 (700-1)	NA	

MRL Rwy 10-28
REIL Rwy 10 and 28

EC-1, 22 FEB 2024 to 21 MAR 2024

EC-1, 22 FEB 2024 to 21 MAR 2024

APP CRS	Rwy Idg	3499
274°	TDZE	969
	Apt Elev	969

RNAV (GPS) RWY 28

LAKEVIEW/GRIFFITH FLD (13C)

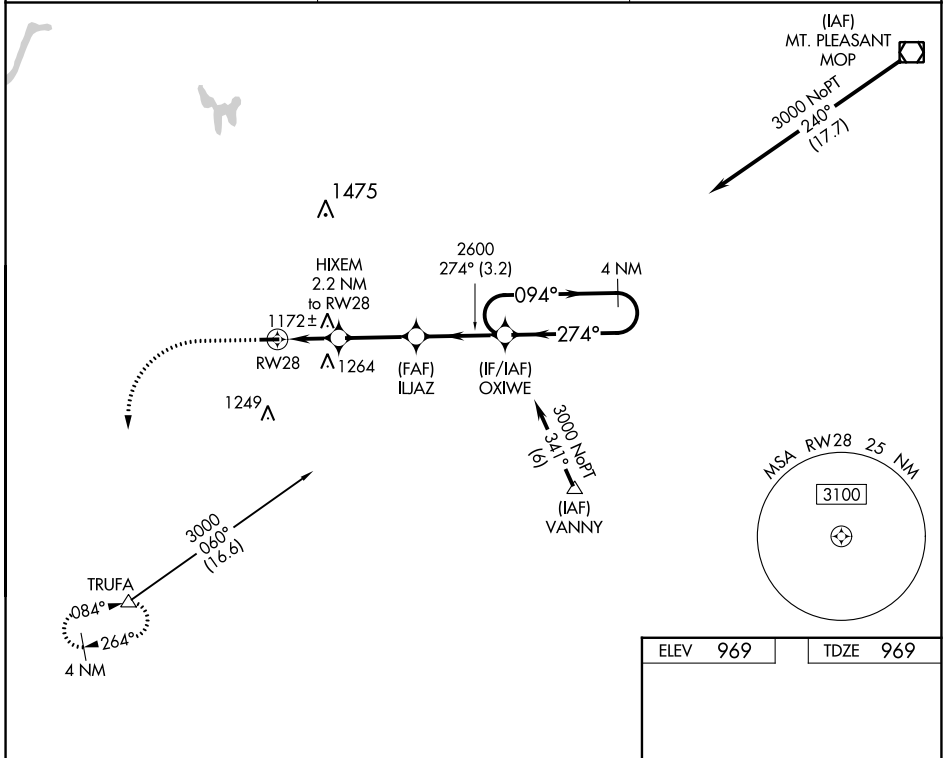
⚠ Use Big Rapids altimeter setting; when not received, use Mount Pleasant altimeter setting and increase all MDA 40 ft. DME/DME RNP-0.3 NA. Procedure NA at night. Helicopter visibility reduction below 1 SM NA.

MISSED APPROACH: Climb to 1800 then climbing left turn to 3000 direct TRUFA and hold.

RQB AWOS-3P
125.875

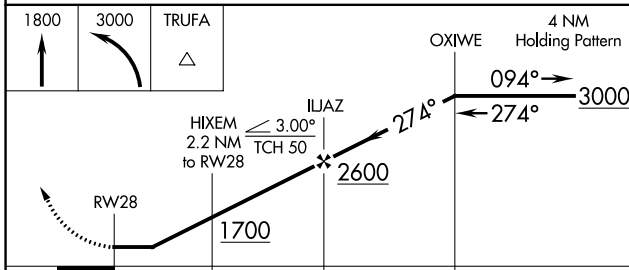
GREAT LAKES APP CON *
124.6 257.6

UNICOM
122.8 (CTAF) 0



EC-1, 22 FEB 2024 to 21 MAR 2024

EC-1, 22 FEB 2024 to 21 MAR 2024



ELEV	969	TDZE	969
------	-----	------	-----

CATEGORY	A	B	C	D
LNAV MDA	1480-1	511 (600-1)	NA	
C CIRCLING	1480-1 511 (600-1)	1580-1 611 (700-1)	NA	

