

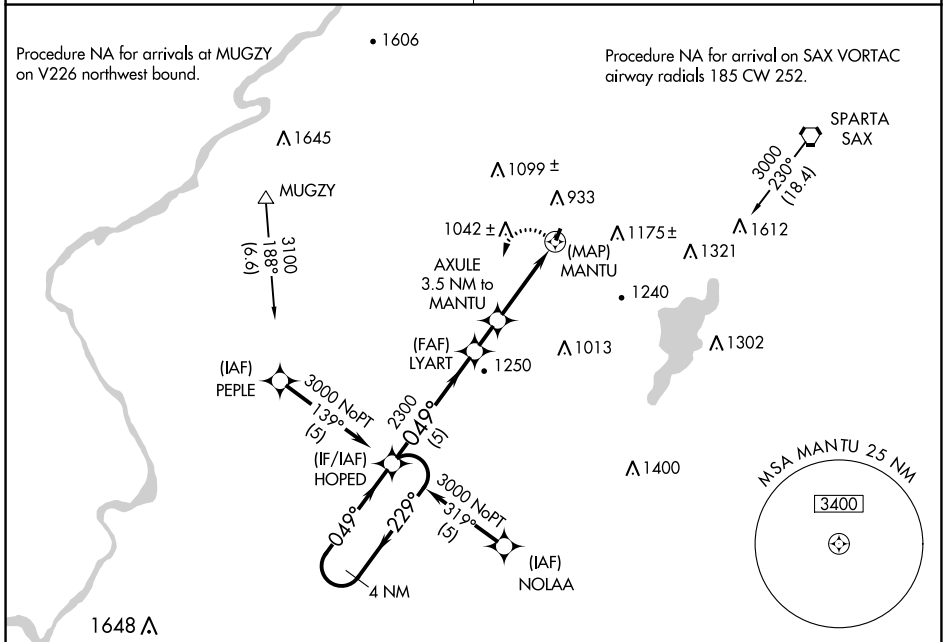
APP CRS	Rwy Idg	<b>1981</b>
<b>049°</b>	TDZE	<b>583</b>
	Apt Elev	<b>583</b>

# RNAV (GPS) RWY 3

AEROFLEX/ANDOVER (12N)

RNP APCH.	MISSED APPROACH:
<p>▼ When local altimeter setting not received, use Caldwell altimeter setting and increase all MDA 120 feet. Procedure NA at night. Rwy 3 helicopter visibility reduction below 1 SM NA.</p>	<p>Climbing left turn to 3000 direct HOPED and hold.</p>

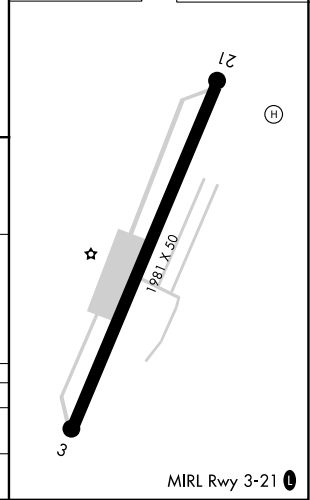
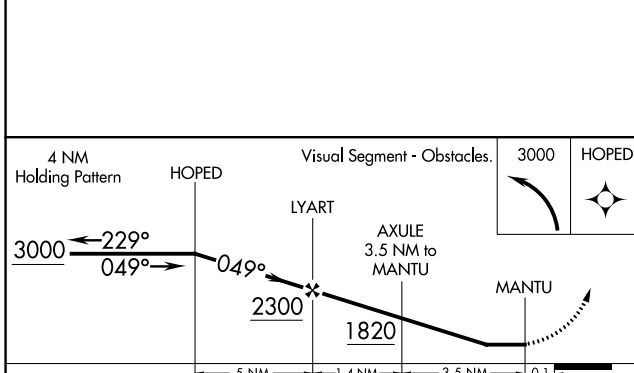
NEW YORK APP CON <b>127.6 379.9</b>	UNICOM <b>122.8 (CTAF) 0</b>
--	---------------------------------



NE-2, 22 FEB 2024 to 21 MAR 2024

NE-2, 22 FEB 2024 to 21 MAR 2024

ELEV 583	TDZE 583
----------	----------



CATEGORY	A	B	C	D
LNVA MDA	1340-1757 (800-1)		NA	
CIRCLING	1560-174977 (1000-1¼)		NA	

VOR/DME STW <b>109.6</b> Chan <b>33</b>	APP CRS <b>094°</b>	Rwy Idg TDZE Apt Elev <b>1981</b> <b>N/A</b> <b>583</b>
---	------------------------	--

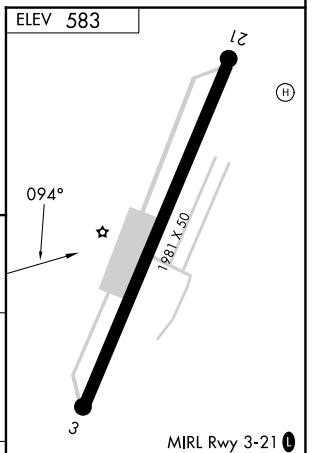
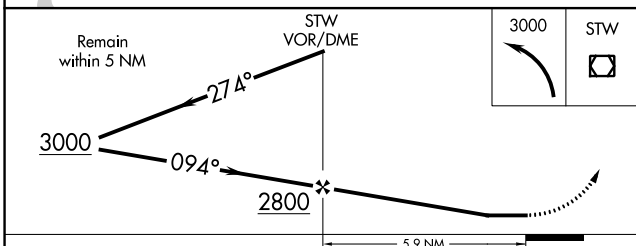
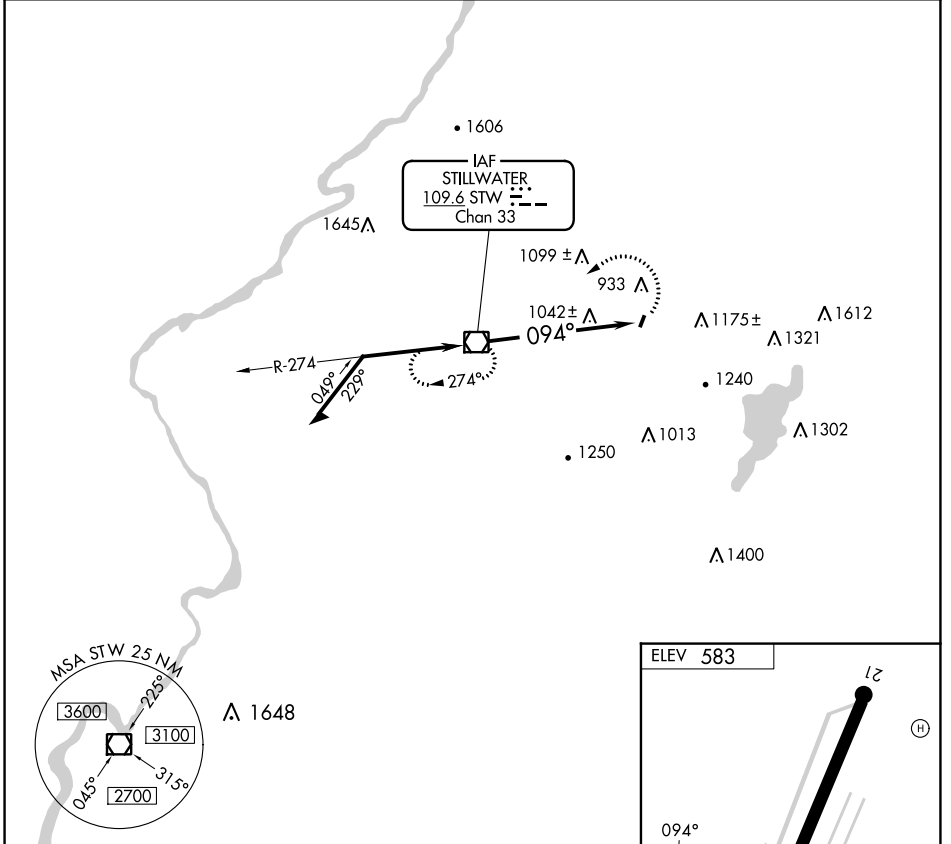
# VOR-A

AEROFLEX/ANDOVER (12N)

▼ When local altimeter setting not received, use Caldwell altimeter setting and increase MDA 120 feet. Procedure NA at night.

▲ MISSED APPROACH: Climbing left turn to 3000 direct STW VOR/DME and hold.

NEW YORK APP CON <b>127.6 379.9</b>	UNICOM <b>122.8 (CTAF)</b>
--	-------------------------------



CATEGORY	A	B	C	D	FAF to MAP 5.9 NM					
CIRCLING	1560-1¼		NA		Knots	60	90	120	150	180
	977 (1000-1¼)				Min:Sec	5:54	3:56	2:57	2:22	1:58

NE-2, 22 FEB 2024 to 21 MAR 2024

NE-2, 22 FEB 2024 to 21 MAR 2024