

CLAYTON, ALABAMA

AL-6507 (FAA)

23166

WAAS CH 82536 W28A	APP CRS 281°	Rwy Idg TDZE Apt Elev	5010 435 435
--	------------------------	-----------------------------	---

RNAV (GPS) RWY 28

CLAYTON MUNI (11A)

RNP APCH - GPS.

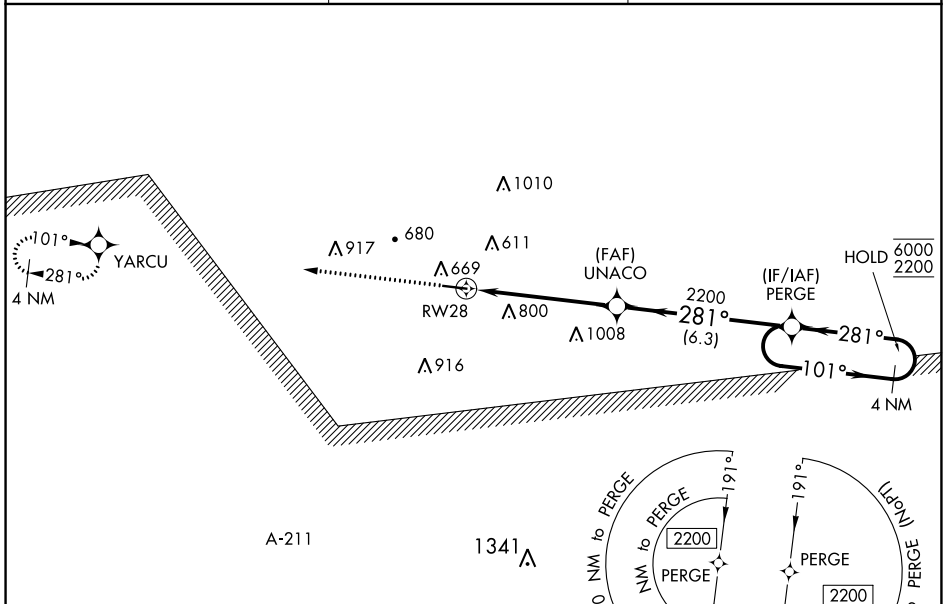
- ▼ Rwy 28 helicopter visibility reduction below 3/4 SM NA. Use Eufaula altimeter setting; when not received, use Troy altimeter setting.
- ▲ NA

MISSED APPROACH:
Climb to 2200 direct
YARCU and hold.

EUF ASOS
128.325

CAIRNS APP CON ★
121.1 319.25

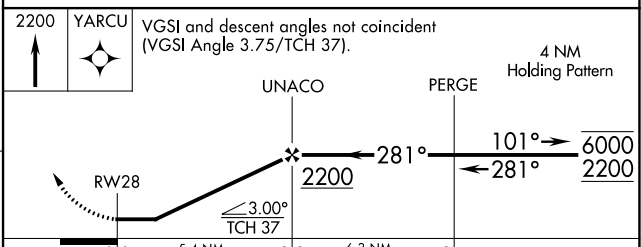
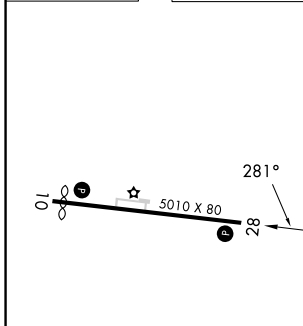
CTAF
122.90



SE-4, 22 FEB 2024 to 21 MAR 2024

SE-4, 22 FEB 2024 to 21 MAR 2024

ELEV 435	TDZE 435
----------	----------



CATEGORY	A	B	C	D
LP MDA	1140-1	705 (800-1)	1140-2	705 (800-2)
LNAV MDA	1140-1	705 (800-1)	1140-2	705 (800-2)
<input checked="" type="checkbox"/> CIRCLING	1180-1	745 (800-1)	1180-2 1/4 745 (800-2 1/4)	1300-2 3/4 865 (900-2 3/4)

CLAYTON, ALABAMA
Amdt 1D 15JUN23

31°53'N-85°29'W

RNAV (GPS) RWY 28

CLAYTON MUNI (11A)