

MILLERSBURG, OHIO

AL-5561 (FAA)

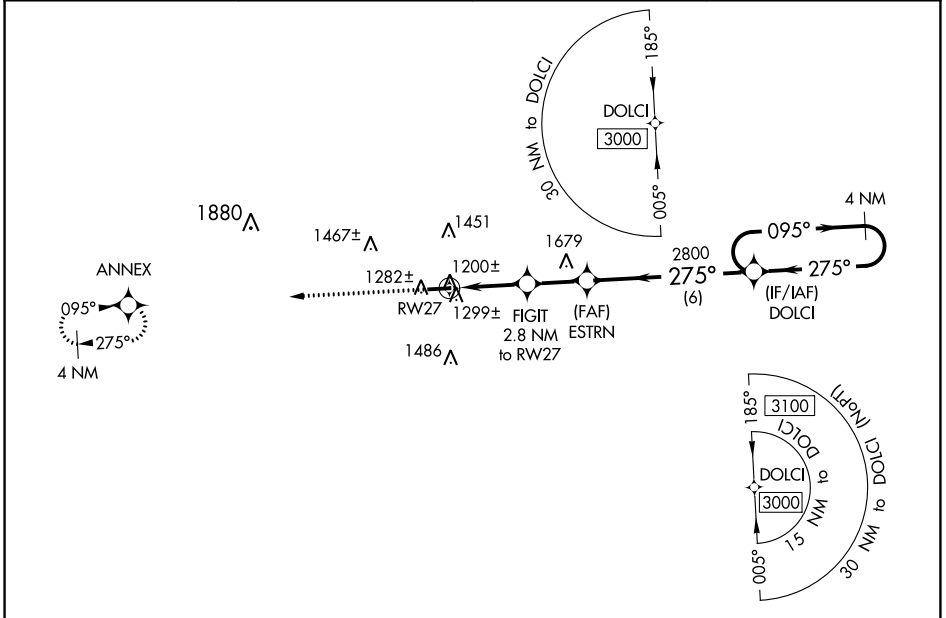
23166

WAAS CH <b>57937</b> <b>W27A</b>	APP CRS <b>275°</b>	Rwy Idg <b>4400</b> TDZE <b>1215</b> Apt Elev <b>1227</b>
--	------------------------	---

# RNAV (GPS) RWY 27

HOLMES COUNTY (10G)

RNP APCH - GPS.			MISSED APPROACH: Climb to 3000 direct ANNEX and hold.
<p>When local altimeter setting not received, use Wayne County altimeter setting: increase all MDA 60 feet and visibility LNAV and Circling Cats C and D ¼ SM.</p>			
AWOS-3 <b>128.325</b>	INDIANAPOLIS CENTER <b>124.45 323.275</b>	UNICOM <b>123.0 (CTAF)</b>	<b>123.4 0</b>



EC-2, 22 FEB 2024 to 21 MAR 2024

EC-2, 22 FEB 2024 to 21 MAR 2024

ELEV 1227	TDZE 1215	<p>3000 ANNEX VGSI and descent angles not coincident (VGSI Angle 3.00/TCH 25). 4 NM Holding Pattern</p>			
		<p>Detailed descent profile diagram showing altitudes (2100, 2800, 3000), distances (0.9, 1.9, 2.2, 6 NM), and angles (3.00°, TCH 40°).</p>			
CATEGORY	A	B	C	D	
LP MDA	1480-1		265 (300-1)		
LNAV MDA	1560-1		345 (400-1)		
CIRCLING	1760-1	533 (600-1)	1840-1¾ 613 (700-1¾)	1860-2 633 (700-2)	

MILLERSBURG, OHIO  
Orig-C 29DEC22

40°32'N-81°57'W

# RNAV (GPS) RWY 27

HOLMES COUNTY (10G)

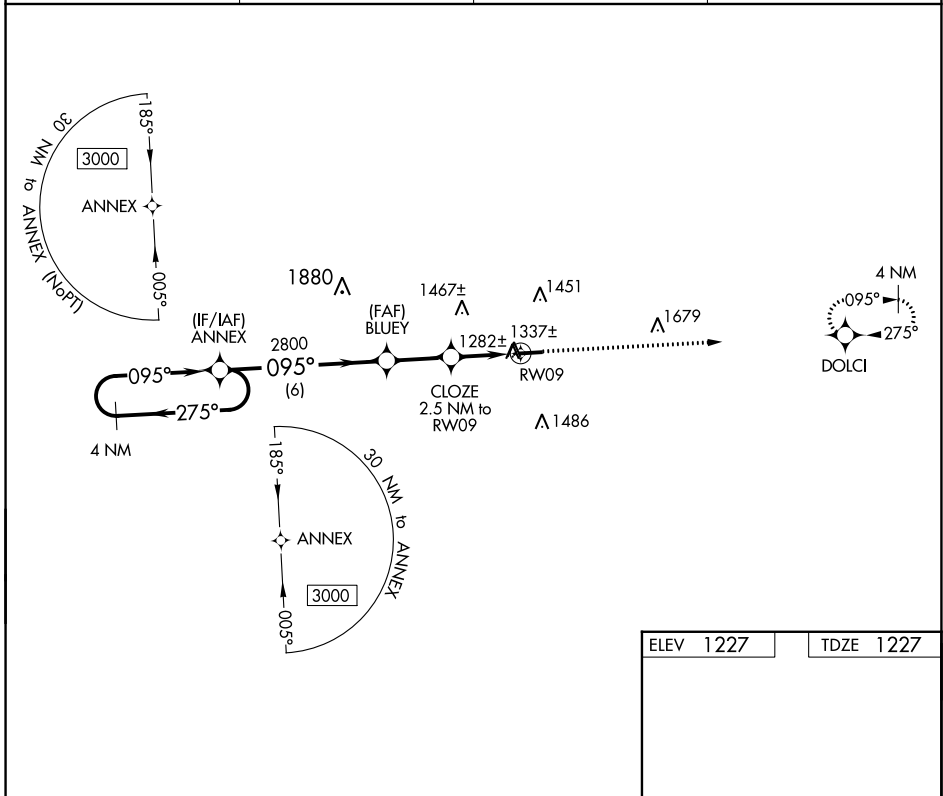
APP CRS	Rwy Idg	<b>4400</b>
<b>095°</b>	TDZE	<b>1227</b>
	Apt Elev	<b>1227</b>

# RNAV (GPS) RWY 9

HOLMES COUNTY (10G)

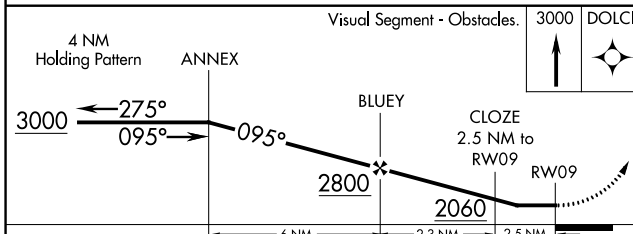
RNP APCH - GPS.	MISSED APPROACH: Climb to 3000 direct DOLCI and hold.
Rwy 9 helicopter visibility reduction below $\frac{3}{4}$ SM NA. When local altimeter setting not received, use Wayne County altimeter setting: increase all MDA 60 feet and visibility LNAV and Circling Cats C and D $\frac{1}{4}$ SM.	

AWOS-3 <b>128.325</b>	INDIANAPOLIS CENTER <b>124.45 323.275</b>	UNICOM <b>123.0</b> (CTAF)	<b>123.4</b>
--------------------------	--	-------------------------------	--------------



EC-2, 22 FEB 2024 to 21 MAR 2024

EC-2, 22 FEB 2024 to 21 MAR 2024



ELEV 1227	TDZE 1227
-----------	-----------

Obstacle: 1251± ft, 4400 x 75 ft, 1.0% UP, 27 ft. Slope: 095°.

MIRL Rwy 9-27 REIL Rwy 9 and 27

CATEGORY	A	B	C	D
LNAV MDA	1620-1	393 (400-1)	1620-1 $\frac{1}{8}$	393 (400-1 $\frac{1}{8}$ )
CIRCLING	1760-1	533 (600-1)	1840-1 $\frac{3}{4}$ 613 (700-1 $\frac{3}{4}$ )	1860-2 633 (700-2)