

WAAS CH 62837 W11A	APP CRS 111°	Rwy Idg TDZE 721 Apt Elev 721	3850
--	------------------------	---	-------------

RNAV (GPS) RWY 11

CYNTHIANA-HARRISON COUNTY (Ø18)

RNP APCH.

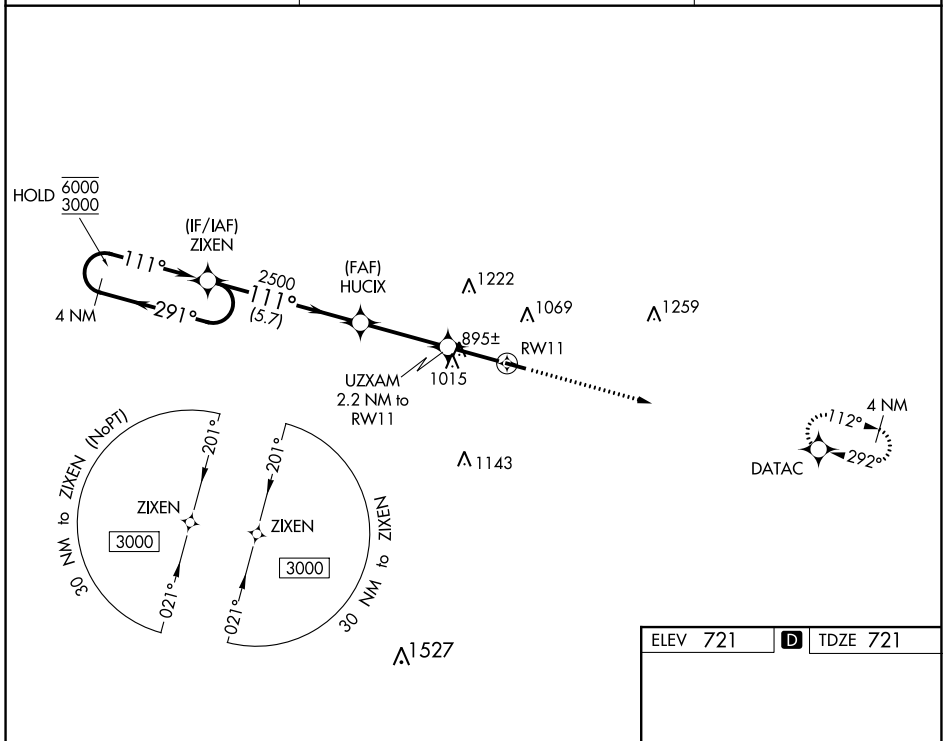
▼ Procedure NA at night. Rwy 11 helicopter visibility reduction below 1 SM NA.
▲ NA Use Georgetown altimeter setting; when not received, use Lexington altimeter setting and increase all MDA 40 feet.

MISSED APPROACH:
Climb to 3000 direct
DATAC and hold.

27K AWOS-3
119.975

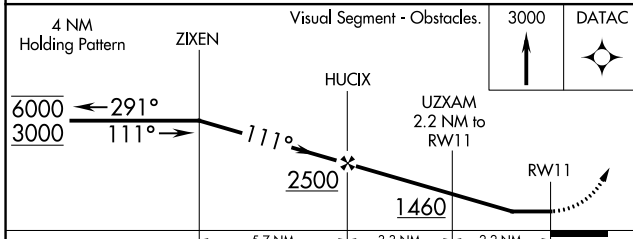
LEXINGTON APP CON
120.15 259.3 (040°-220°)
120.75 298.9 (221°-039°)

UNICOM
122.8 (CTAF) **Ø**

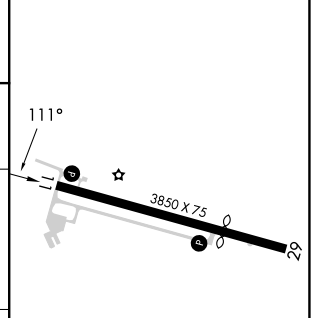


SE-1, 22 FEB 2024 to 21 MAR 2024

SE-1, 22 FEB 2024 to 21 MAR 2024



ELEV 721	D TDZE 721
----------	-------------------



CATEGORY	A	B	C	D
LP MDA	1220-1	499 (500-1)		NA
LNAV MDA	1300-1	579 (600-1)		NA
C CIRCLING	1340-1 619 (700-1)	1560-1¼ 839 (900-1¼)		NA

MIRL Rwy 11-29 **Ø**
REIL Rws 11 and 29 **Ø**

WAAS CH 42537 W29A	APP CRS 292°	Rwy Idg 2756 TDZE 721 Apt Elev 721
--	------------------------	---

RNAV (GPS) RWY 29

CYNTHIANA-HARRISON COUNTY (Ø18)

RNP APCH.

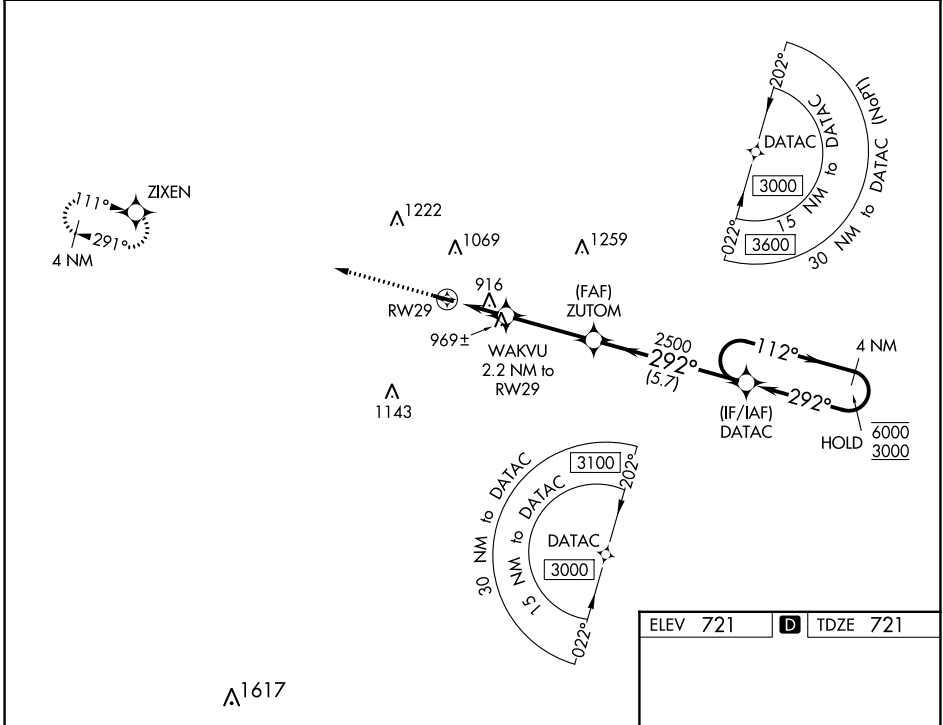
- ▼ Procedure NA at night. Rwy 29 helicopter visibility reduction below 1 SM NA. Use Georgetown altimeter setting; when not received, use Lexington altimeter setting and increase all MDA 40 feet.
- ▲ NA

MISSED APPROACH: Climb to 3000 direct ZIXEN and hold.

27K AWOS-3
119.975

LEXINGTON APP CON
120.15 259.3 (040°-220°)
120.75 298.9 (221°-039°)

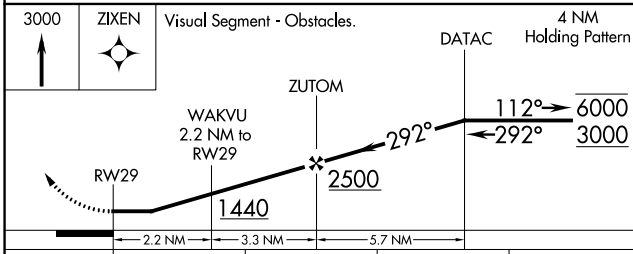
UNICOM
122.8 (CTAF) **Ø**



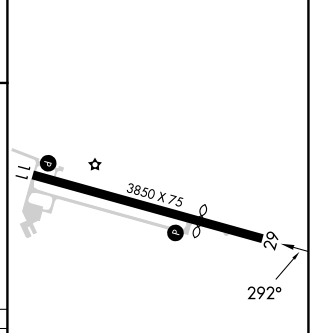
SE-1, 22 FEB 2024 to 21 MAR 2024

SE-1, 22 FEB 2024 to 21 MAR 2024

ELEV 721	D TDZE 721
----------	-------------------



CATEGORY	A	B	C	D
LP MDA	1240-1	519 (600-1)		NA
LNAV MDA	1280-1	559 (600-1)		NA
C CIRCLING	1340-1 619 (700-1)	1560-1¼ 839 (900-1¼)		NA



MIRL Rwy 11-29 **Ø**
 REIL Rvys 11 and 29 **Ø**