

WAAS CH 53722 W13A	APP CRS 135°	Rwy Idg TDZE Apt Elev	3950 1383 1388
--	------------------------	-----------------------------	---

RNAV (GPS) RWY 13

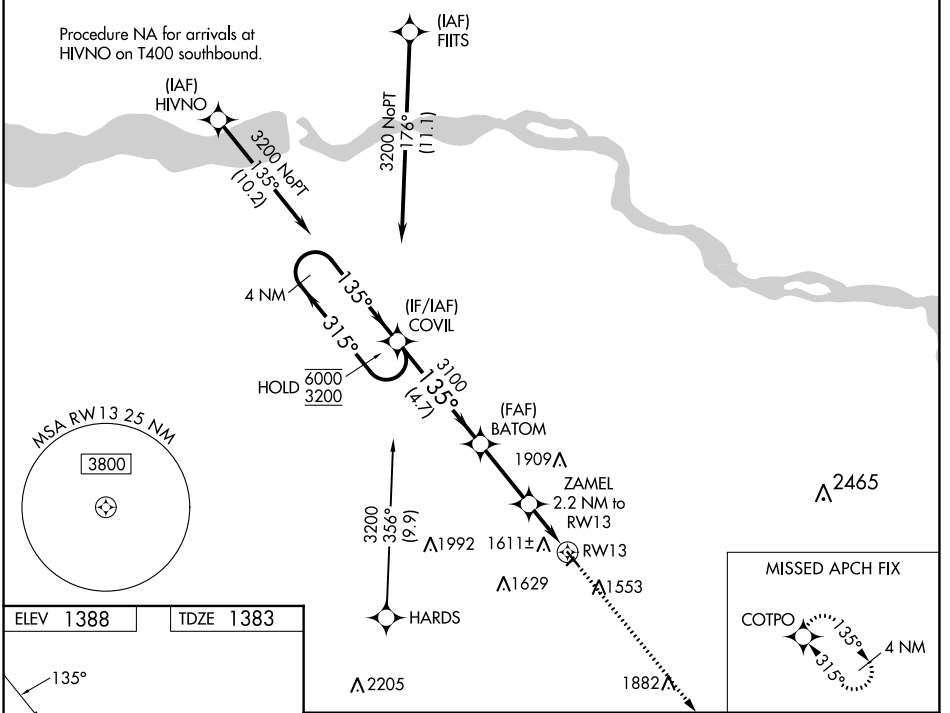
HARTINGTON MUNI/BUD BECKER FLD (ØB4)

RNP APCH - GPS.

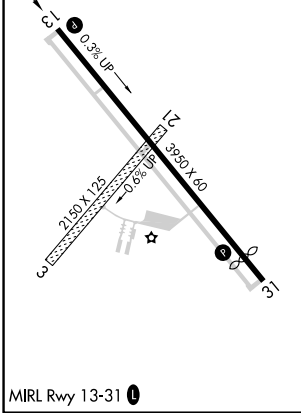
▼ Rwy 13 helicopter visibility reduction below ¼ SM NA. Baro-VNAV NA.
 ▲ NA Use Yankton altimeter setting; when not received, use Brookings Rgnl altimeter setting and increase LPV DA to 1831 feet. Increase LNAV/VNAV DA to 2230 feet. Increase LNAV MDA 20 feet.

MISSED APPROACH: Climb to 3200 direct COTPO and hold.

YKN AWOS-3PT 119.05	MINNEAPOLIS CENTER 125.025 235.625	CTAF 122.90
-------------------------------	--	-----------------------



ELEV 1388	TDZE 1383
-----------	-----------



VGSI and RNAV glidepath not coincident (VGSI Angle 4.00/TCH 52).

	4 NM Holding Pattern	COVIL	BATOM	3200	COTPO
	6000 ← 315°	3100	3100	↑	✧
	3200 → 135°	135°	ZAMEL 2.2 NM to RW13		
	GP 3.20° TCH 45	3100	2140		
		4.7 NM	2.8 NM	2.2 NM	
CATEGORY	A	B	C	D	
LPV DA	1824-1 ⅜	441 (500-1 ⅝)			NA
LNAV/VNAV DA	2223-2 ½	840 (900-2 ½)			NA
LNAV MDA	2000-1	617 (700-1)			NA

NC-2, 22 FEB 2024 to 21 MAR 2024

NC-2, 22 FEB 2024 to 21 MAR 2024

WAAS CH 86523 W31A	APP CRS 315°	Rwy Idg TDZE Apt Elev	3550 1383 1388
--	------------------------	-----------------------------	---

RNAV (GPS) RWY 31

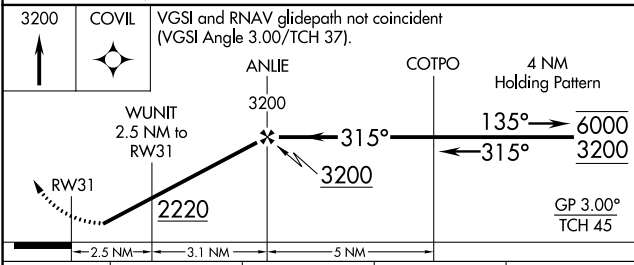
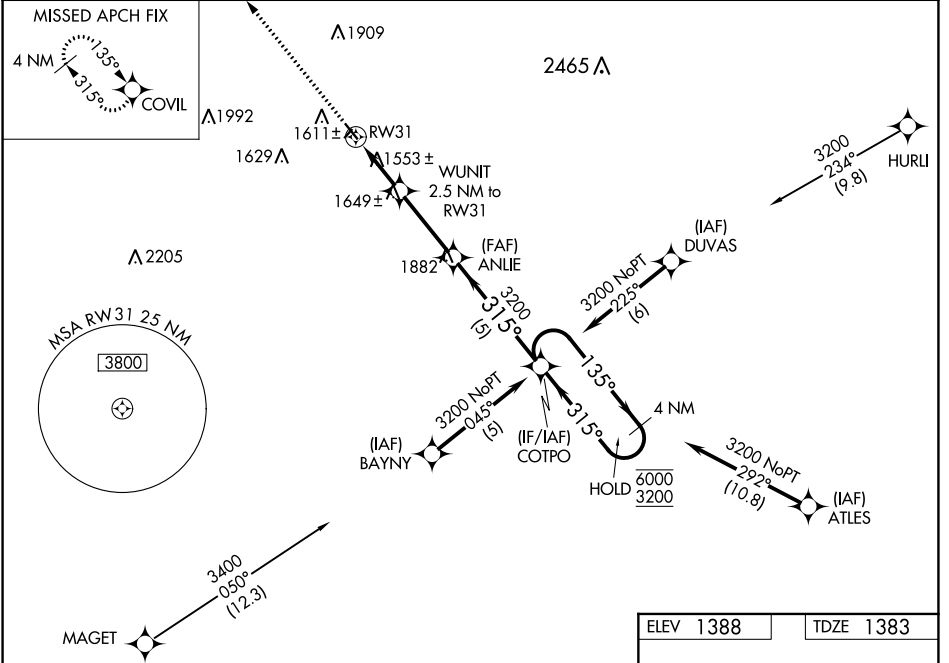
HARTINGTON MUNI/BUD BECKER FLD (ØB4)

RNP APCH - GPS.

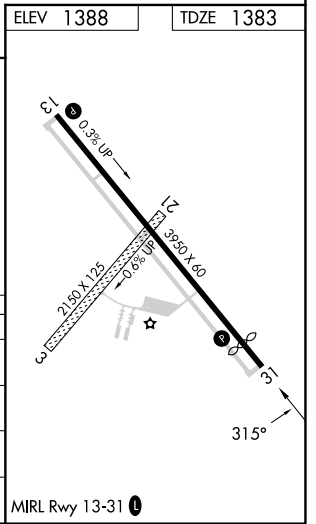
NA Baro-VNAV NA. Circling NA to Rwy 3 and 21. Rwy 31 helicopter visibility reduction below 3/4 SM NA. Use Yankton altimeter setting; when not received, use Wayne altimeter setting and increase LPV DA to 1697 feet; increase LNAV/VNAV DA to 1969 feet and all visibilities 1/2 SM; increase all MDAs 20 feet.

MISSED APPROACH: Climb to 3200 direct COVIL and hold.

YKN AWOS-3PT 119.05	MINNEAPOLIS CENTER 125.025 235.625	CTAF 122.90
-------------------------------	--	-----------------------



CATEGORY	A	B	C	D
LPV DA	1690-7/8	307 (400-7%)		NA
LNAV/VNAV DA	1962-15/8	579 (600-1%)		NA
LNAV MDA	1980-1	597 (600-1)		NA
CIRCLING	2020-1 632 (700-1)	2200-1 1/4 812 (900-1 1/4)		NA



NC-2, 22 FEB 2024 to 21 MAR 2024

NC-2, 22 FEB 2024 to 21 MAR 2024