

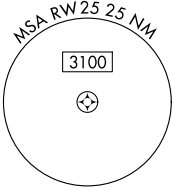
APP CRS 248°	Rwy Idg 1899
	TDZE 547
	Apt Elev 550

RNAV (GPS) RWY 25

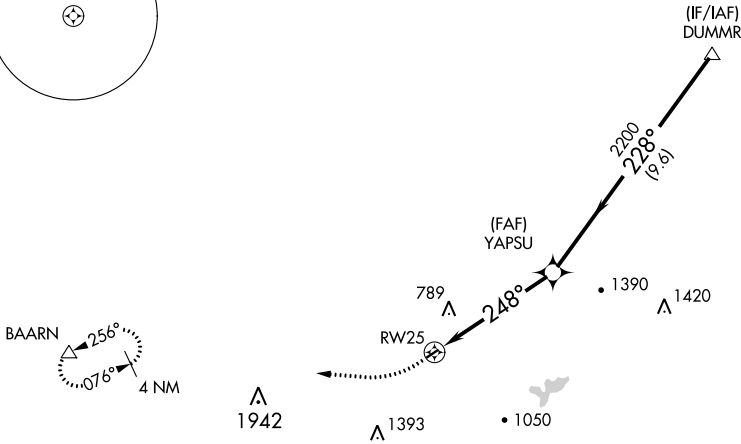
KELLER BROTHERS (Ø8N)

RNP APCH.	<p>Procedure NA at night. Rwy 7 helicopter visibility reduction below 1 SM NA. Use Lancaster altimeter setting; when not received, use Reading altimeter setting and increase all MDA 40 feet.</p>	MISSED APPROACH: Climbing right turn to 3000 direct BAARN and hold.
-----------	--	---

LNS ASOS 125.675	HARRISBURG APP CON 126.45 281.525	CTAF 122.9	121.9
----------------------------	---	----------------------	--------------



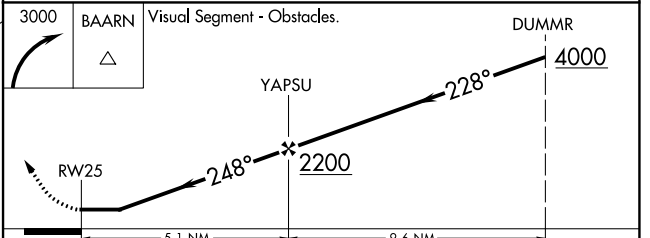
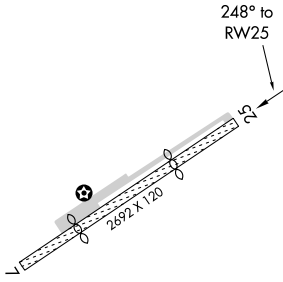
Procedure NA for arrivals at DUMMR on V93 northeast bound, V162 eastbound and V276 southeast bound.



NE-4, 06 OCT 2022 to 03 NOV 2022

NE-4, 06 OCT 2022 to 03 NOV 2022

ELEV 550	TDZE 547
----------	----------



CATEGORY	A	B	C	D
LNAV MDA	1320-1 773 (800-1)	1320-1¼ 773 (800-1¼)	NA	
CIRCLING	1440-1¼ 890 (900-1¼)	1580-1½ 1030 (1100-1½)	NA	

APP CRS	Rwy Idg	1991
068°	TDZE	547
	Apt Elev	550

RNAV (GPS) RWY 7

KELLER BROTHERS (Ø8N)

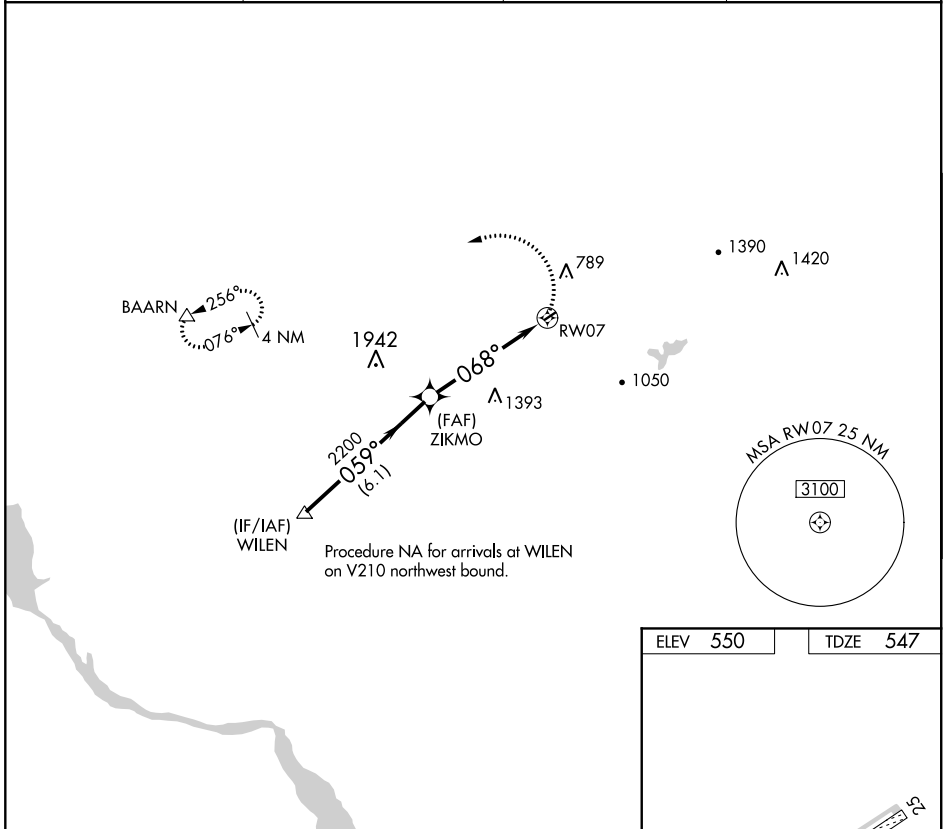
RNP APCH.

▼ Procedure NA at night. Rwy 7 helicopter visibility reduction below 1 SM NA. Use Lancaster altimeter setting; when not received, use Reading altimeter setting and increase all MDA 40 feet.

▲ NA

MISSED APPROACH: Climbing left turn to 3000 direct BAARN and hold.

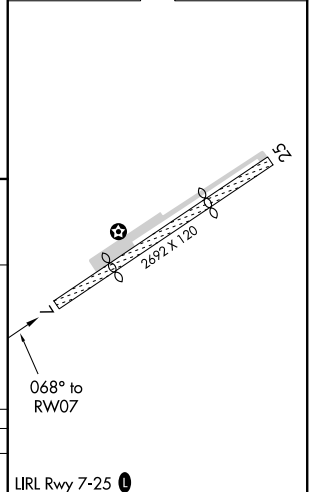
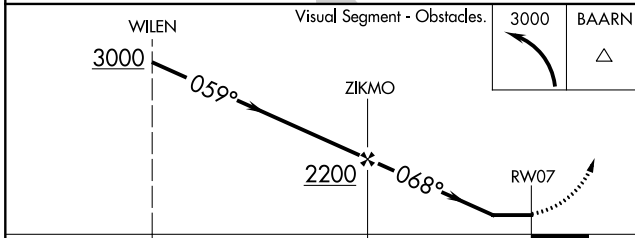
LNS ASOS 125.675	HARRISBURG APP CON 126.45 281.525	CTAF 122.9	121.9 0
----------------------------	---	----------------------	----------------



NE-4, 06 OCT 2022 to 03 NOV 2022

NE-4, 06 OCT 2022 to 03 NOV 2022

ELEV	550	TDZE	547
------	------------	------	------------



CATEGORY	A	B	C	D
LNAV MDA	1640-1¼ 1093 (1100-1¼)	1640-1½ 1093 (1100-1½)	NA	