

APP CRS **278°**  
 Rwy Idg **3900**  
 TDZE **2244**  
 Apt Elev **2245**

**RNAV (GPS) RWY 27**  
 STANLEY MUNI (Ø8D)

RNP APCH.

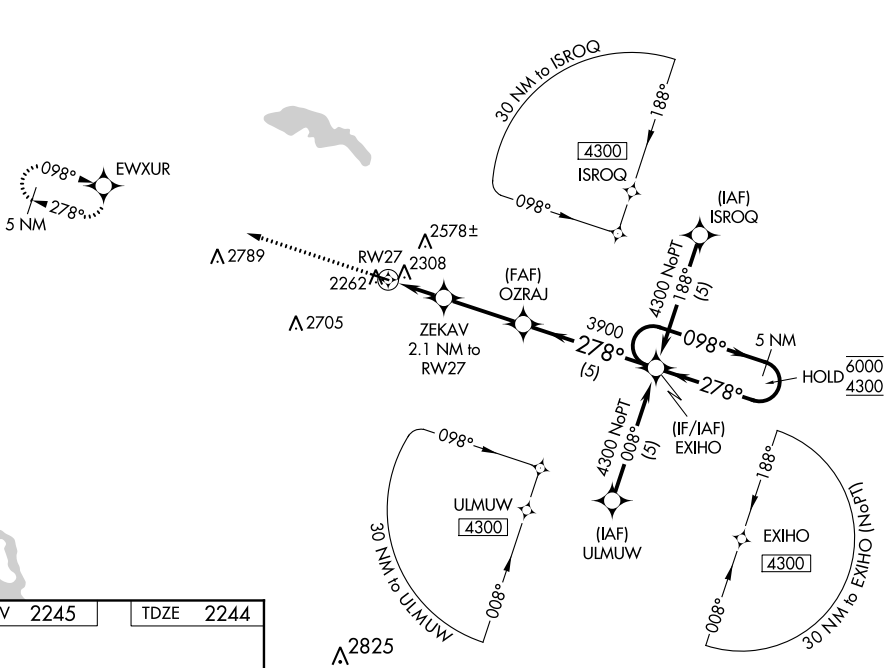
▼ Procedure NA at night.  
 Rwy 27 helicopter visibility reduction below 1 SM NA.

MISSED APPROACH: Climb to 5000 direct EWXR and hold.

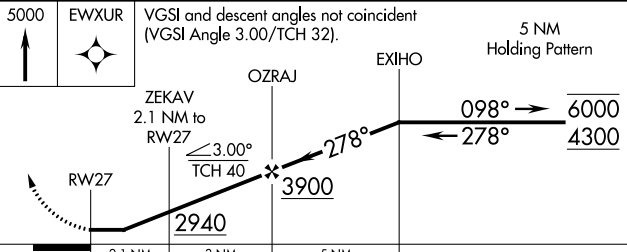
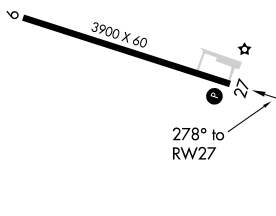
AWOS-3  
**121.1**

MINNEAPOLIS CENTER  
**127.6 279.6**

CTAF  
**122.9**



ELEV **2245** TDZE **2244**



CATEGORY	A	B	C	D
LNAV MDA	2620-1	376 (400-1)	NA	
CIRCLING	2720-1 475 (500-1)	2940-1 695 (700-1)	NA	

NC-1, 07 OCT 2021 to 04 NOV 2021

NC-1, 07 OCT 2021 to 04 NOV 2021