

GOSHEN SEVEN ARRIVAL
(GSH.GSH7) 27 APR 17

GOSHEN SEVEN ARRIVAL
(GSH.GSH7) 21168

CHICAGO APP CON
128.2 353.875
GYV ATIS
134.575
MDW D-ATIS
132.75
IGQ AWOS-3
119.275

CHICAGO
MIDWAY
INTL

GARY/
CHICAGO INTL
GRIFFITH-
MERRILLVILLE
LANSING MUNI

HOBART
SKY RANCH

CHICAGO HEIGHTS
114.2 CGT
Chan 89
N41°30.60'
W87°34.29'

PEOTONE
113.2 EON
Chan 79

AWSUM
N41°31.33'-W86°34.39'
TURBOJET VERTICAL NAVIGATION
PLANNING INFORMATION
Expect 10000.

GIPPER
115.4 GIJ
Chan 101
N41°46.12'
W86°19.11'
L-28, H-5-10

LITCHFIELD
111.2 LFD
Chan 49
N42°03.75'-W84°45.91'
L-28, H-5-10

GOSHEN
113.7 GSH
Chan 84
N41°31.51'
W86°01.68'

HALIE
N41°30.96'
W87°09.53'

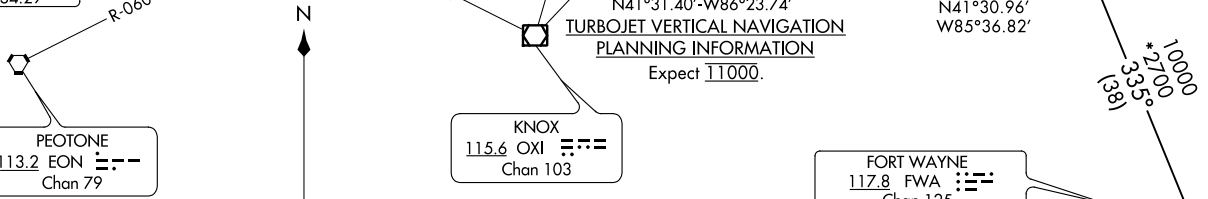
IROCK
N41°31.15'
W86°54.31'

MEGGZ
N41°31.40'-W86°23.74'

KNOX
115.6 OXI
Chan 103

FORT WAYNE
117.8 FWA
Chan 125
N40°58.74'-W85°11.28'
L-27, H-5-10

BAGEL
N41°30.96'
W85°36.82'



NOTE: Radar required.
NOTE: DME required.

NOTE: Chart not to scale.

ARRIVAL ROUTE DESCRIPTION

FORT WAYNE TRANSITION (FWA.GSH7): From over FWA VORTAC on FWA R-335 to BAGEL then on GSH R-092 to GSH VORTAC. Thence....

LITCHFIELD TRANSITION (LFD.GSH7): From over LFD VOR/DME on LFD R-235 to BAGEL then on GSH R-092 to GSH VORTAC. Thence....

....From over GSH VORTAC on GSH R-270 to MEGGZ, then on GSH R-270 to AWSUM, then on GSH R-270 and CGT R-087 to IROCK, then on CGT R-087 to HALIE INT, then on CGT R-087 to CGT VORTAC.
Expect radar vectors to final approach course.

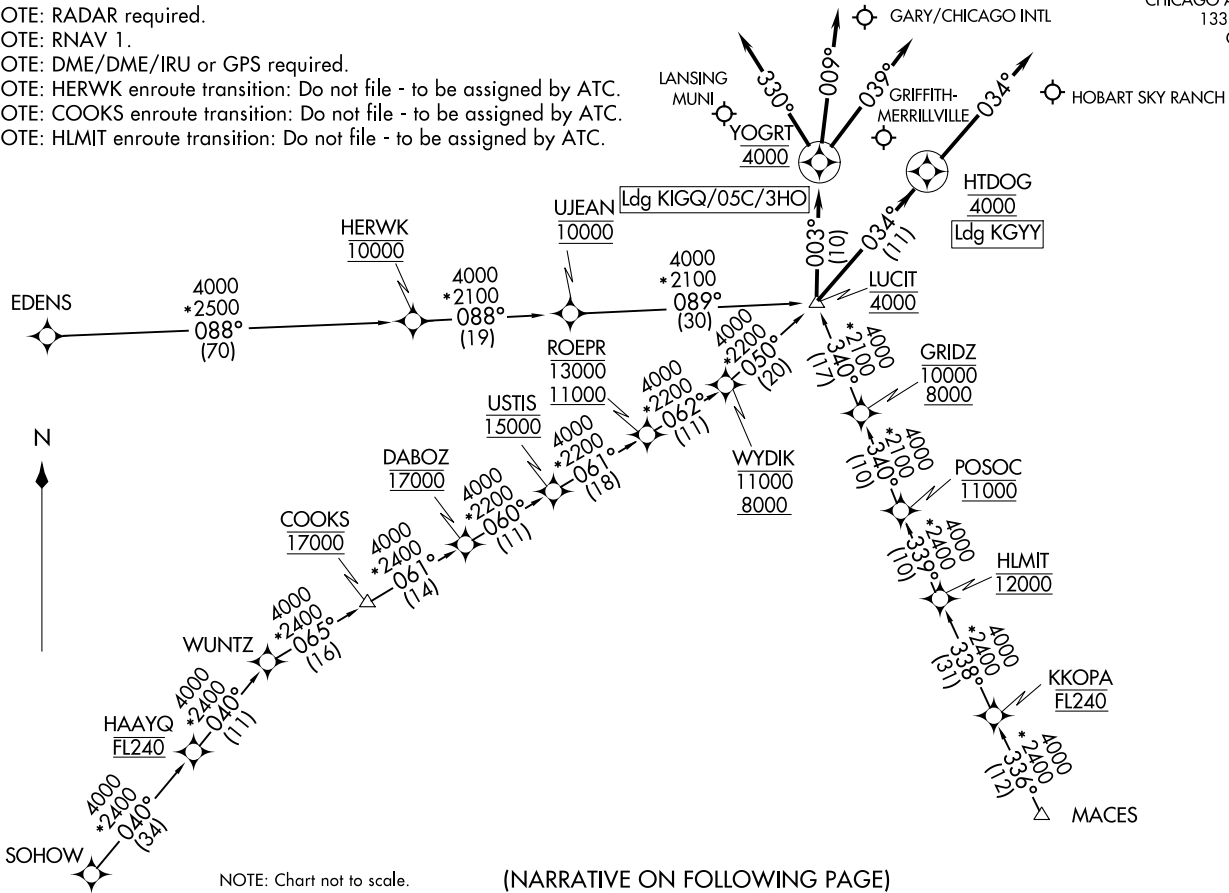
CHICAGO, ILLINOIS

CHICAGO, ILLINOIS

AL-81 (FAA)

CHICAGO APP CON
133.1 285.6
GY ATIS
134.575

NOTE: RADAR required.
NOTE: RNAV 1.
NOTE: DME/DME/IRU or GPS required.
NOTE: HERWK enroute transition: Do not file - to be assigned by ATC.
NOTE: COOKS enroute transition: Do not file - to be assigned by ATC.
NOTE: HLMIT enroute transition: Do not file - to be assigned by ATC.



NOTE: Chart not to scale.

(NARRATIVE ON FOLLOWING PAGE)

LUCIT TWO ARRIVAL (RNAV)
(LUCIT.LUCIT2) 17JUN21

GARY, INDIANA

(LUCIT.LUCIT2) 21336
LUCIT TWO ARRIVAL (RNAV)

AL-748 (FAA)

GARY, INDIANA

ARRIVAL ROUTE DESCRIPTION

COOKS TRANSITION (COOKS.LUCIT2):

EDENS TRANSITION (EDENS.LUCIT2):

HERWK TRANSITION (HERWK.LUCIT2):

HLMIT TRANSITION (HLMIT.LUCIT2):

MACES TRANSITION (MACES.LUCIT2):

SOHOW TRANSITION (SOHOW.LUCIT2):

LANDING 05C: From LUCIT on track 003° to cross YOGRT at 4000, then on track 009°. Expect RADAR vectors to final approach course.

LANDING 3HO: From LUCIT on track 003° to cross YOGRT at 4000, then on track 039°. Expect RADAR vectors to final approach course.

LANDING GYY: From LUCIT on track 034° to cross HTDOG at 4000, then on track 034°. Expect RADAR vectors to final approach course.

LANDING IGQ: From LUCIT on track 003° to cross YOGRT at 4000, then on track 330°. Expect RADAR vectors to final approach course.

EC-2, 02 DEC 2021 to 30 DEC 2021

EC-2, 02 DEC 2021 to 30 DEC 2021