

APP CRS 263°	Rwy Idg 3779
	TDZE 632
	Apt Elev 634

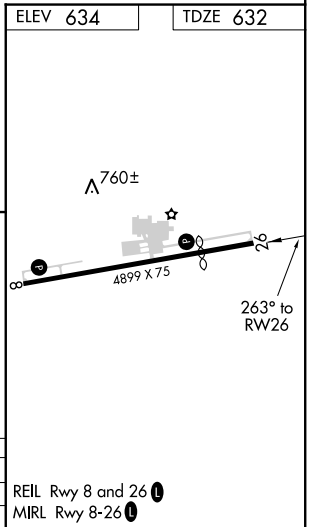
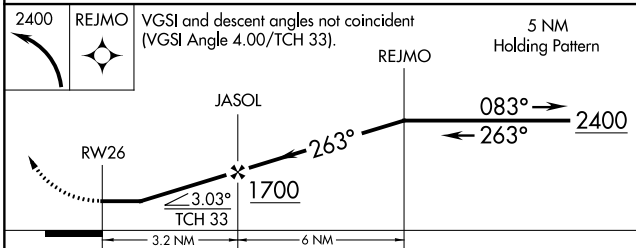
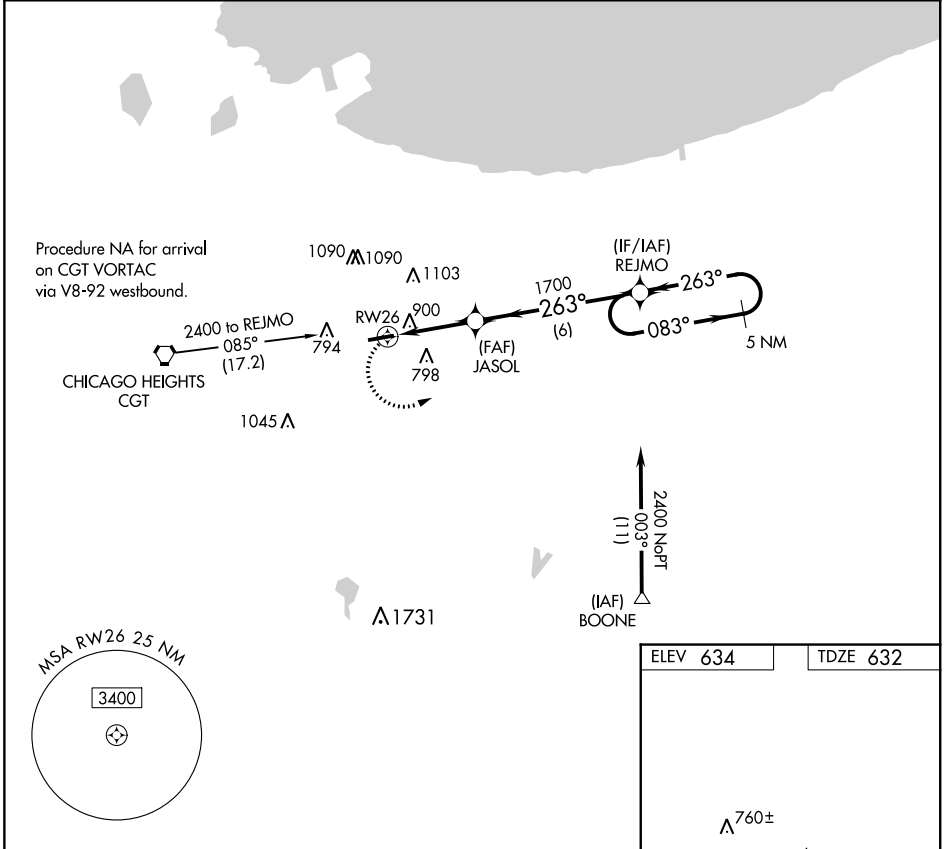
RNAV (GPS) RWY 26

GRIFFITH-MERRILLVILLE (05C)

RNP APCH.
 Obtain local altimeter setting on CTAF; when not received use Chicago Midway
 Init altimeter setting and increase all MDAs 60 feet. Visibility reduction by
 helicopters NA. Procedure NA at night.

MISSED APPROACH: Climbing left turn to 2400 direct REJMO and hold.

CHICAGO APP CON 133.1 285.6	UNICOM 123.0 (CTAF)
---------------------------------------	-------------------------------



CATEGORY	A	B	C	D
LNAV MDA	1160-1	528 (600-1)		NA
CIRCLING	1200-1	566 (600-1)		NA

EC-2, 27 JAN 2022 to 24 FEB 2022

EC-2, 27 JAN 2022 to 24 FEB 2022

APP CRS 083°	Rwy Idg 4899 TDZE 634 Apt Elev 634
------------------------	---

RNAV (GPS) RWY 8

GRIFFITH-MERRILLVILLE (05C)

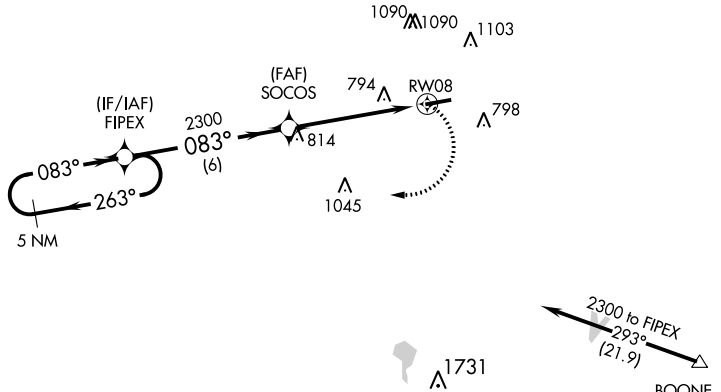
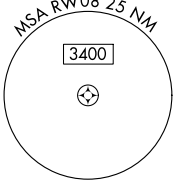
RNP APCH.

Obtain local altimeter setting on CTAF; when not received use Chicago Midway Intl altimeter setting and increase all MDAs 60 feet. Visibility reduction by helicopters NA. Procedure NA at night.

MISSED APPROACH: Climbing right turn to 2300 direct FIPEX and hold.

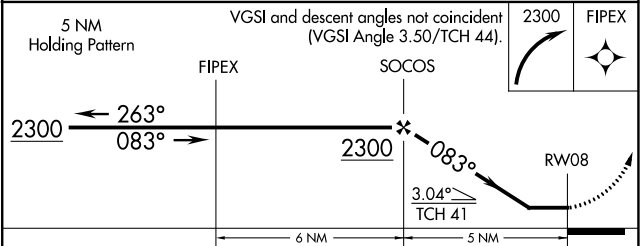
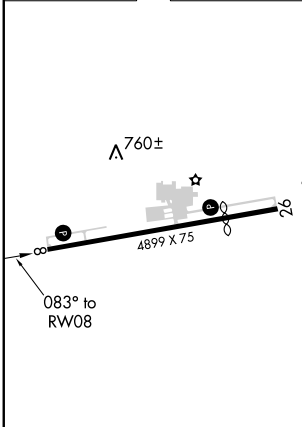
CHICAGO APP CON
133.1 285.6

UNICOM
123.0 (CTAF) 0



Procedure NA for arrivals at BOONE via V422 southeastbound.

ELEV 634 TDZE 634



REIL Rwy 8 and 26 **0**
MIRL Rwy 8-26 **0**

CATEGORY	A	B	C	D
LNNAV MDA	1080-1	446 (500-1)		NA
C CIRCLING	1200-1	566 (600-1)		NA

EC-2, 27 JAN 2022 to 24 FEB 2022

EC-2, 27 JAN 2022 to 24 FEB 2022

GRIFFITH, INDIANA

AL-5431 (FAA)

20086

VORTAC CGT 114.2 Chan 89	APP CRS 084°	Rwy Idg TDZE 634 Apt Elev 634	4899
--	------------------------	---	-------------

VOR RWY 8

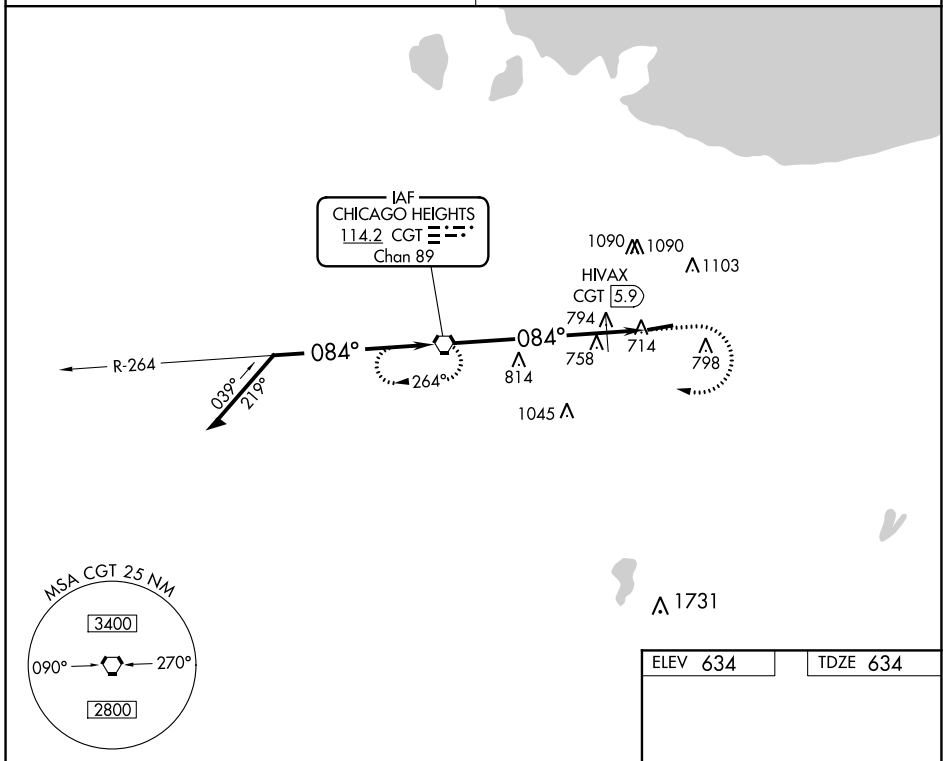
GRIFFITH-MERRILLVILLE (Ø5C)

⚠️ Obtain local altimeter setting on CTAF; when not received, use Chicago Midway Intl altimeter setting and increase all MDAs 60 feet. Visibility reduction by helicopters NA. Procedure NA at night.

MISSED APPROACH: Climb to 1100 then climbing right turn to 2300 direct CGT VORTAC and hold.

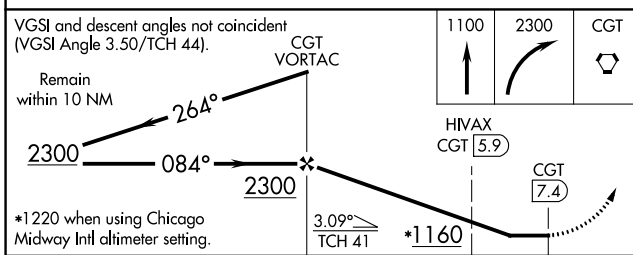
CHICAGO APP CON
133.1 285.6

UNICOM
123.0 (CTAF) 0



EC-2, 27 JAN 2022 to 24 FEB 2022

EC-2, 27 JAN 2022 to 24 FEB 2022



ELEV 634	TDZE 634
REIL Rwy 8 and 26 0	
MIRL Rwy 8-26 0	
FAF to MAP 7.4 NM	
S-8	1060-1 426 (500-1)
CIRCLING	1200-1 566 (600-1)
HIVAX FIX MINIMUMS	
S-8	1060-1 426 (500-1)
CIRCLING	1200-1 566 (600-1)
Knots	60 90 120 150 180
Min:Sec	7:24 4:56 3:42 2:58 2:28

GRIFFITH, INDIANA
Amdt 8B 24MAY18

41°31'N-87°24'W

GRIFFITH-MERRILLVILLE (Ø5C)
VOR RWY 8