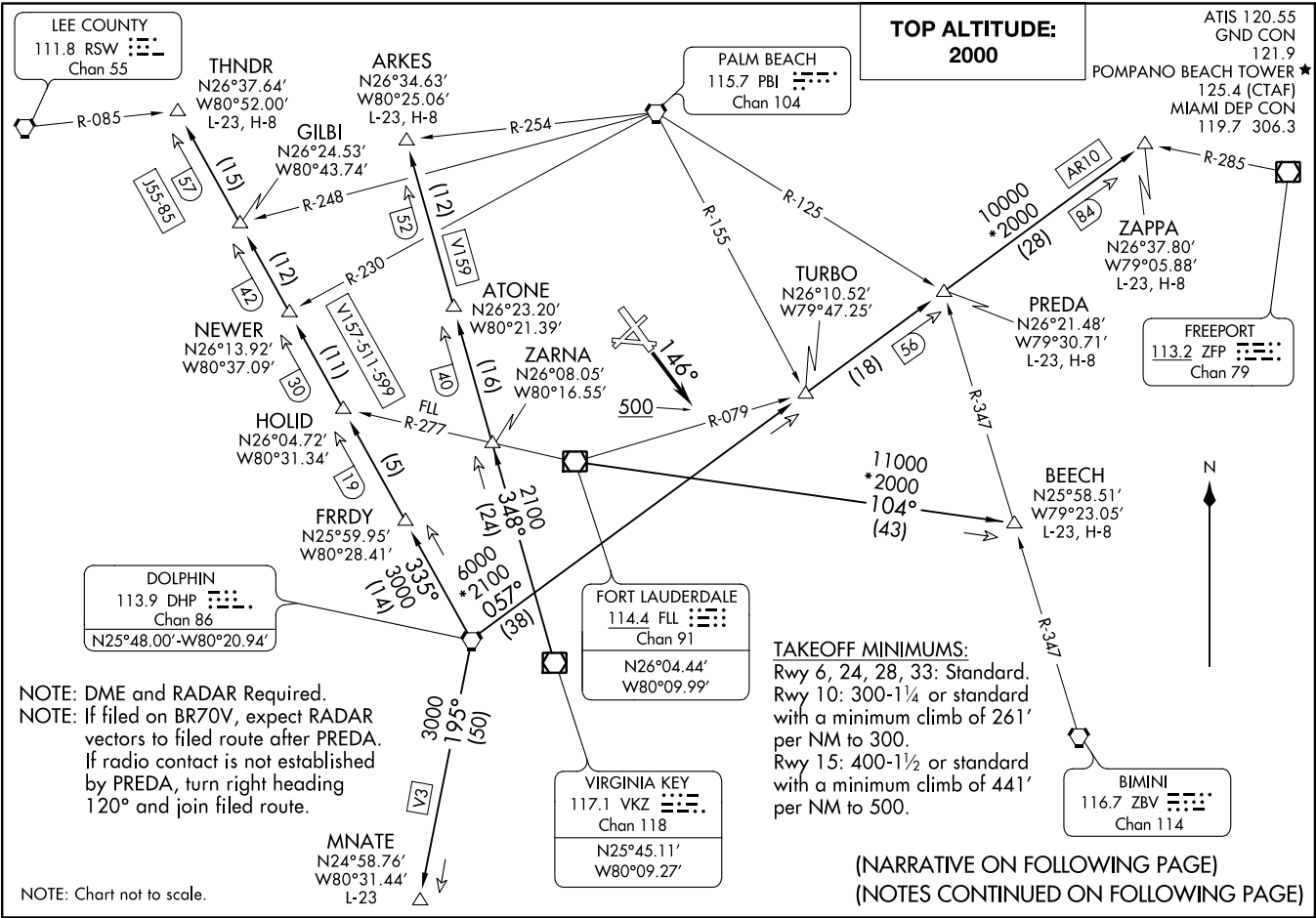


(FL16.FIL) 15176

FORT LAUDERDALE SIX DEPARTURE

POMPANO BEACH, FLORIDA
POMPANO BEACH AIRPARK (PMP)



(NARRATIVE ON FOLLOWING PAGE)
(NOTES CONTINUED ON FOLLOWING PAGE)

(FL16.FIL) 15176

FORT LAUDERDALE SIX DEPARTURE

POMPANO BEACH AIRPARK (PMP)
POMPANO BEACH, FLORIDA

SI-5972 (FAA)

FORT LAUDERDALE SIX DEPARTURE



DEPARTURE ROUTE DESCRIPTION

TAKEOFF RWY 6, 10, 24, 28, 33: Climb on assigned heading. Thence . . .

TAKEOFF RWY 15: Climb heading 146° to 500, then climb on assigned heading. Thence . . .

. . . Maintain 2000 or higher assigned altitude and expect radar vectors to appropriate transition. Expect further clearance to filed altitude ten (10) minutes after departure.

ARKES TRANSITION (FLL6.ARKES): From over VKZ VOR/DME on VKZ R-348 to ARKES INT.

BEECH TRANSITION (FLL6.BEECH): From over FLL VOR/DME on FLL R-104 to BEECH INT.

MNATE TRANSITION (FLL6.MNATE): From over DHP VORTAC on DHP R-195 to MNATE.

PREDA TRANSITION (FLL6.PREDA): From over DHP VORTAC on DHP R-057 to PREDA INT.

THNDR TRANSITION (FLL6.THNDR): From over DHP VORTAC on DHP R-335 to THNDR INT.

ZAPPA TRANSITION (FLL6.ZAPPA): From over DHP VORTAC on DHP R-057 to ZAPPA INT.

TAKEOFF OBSTACLE NOTES:

Rwy 6: Trees beginning 101' from DER, 26' left and 232' right of centerline, up to 70' AGL/84' MSL.

Rwy 10: Pole 154' from DER, 131' left of centerline, 9' AGL/18' MSL. Trees, pole, and building beginning 427' from DER, 12' left and 343' right of centerline, up to 49' AGL/63' MSL. Poles and building beginning 1264' from DER, 166' left and 286' right of centerline, up to 64' AGL/72' MSL. Building 5670' from DER, 604' right of centerline, 186' AGL/190' MSL. Buildings 1 NM from DER, 887' left of centerline, up to 201' AGL/210' MSL.

Rwy 15: Building, trees, and poles beginning 502' from DER, 306' left and 434' right of centerline, 44' AGL/54' MSL. Trees beginning 1229' from DER, 152' left and 190' right of centerline, up to 71' AGL/62' MSL. Building 5994' from DER, 1491' left of centerline, 213' AGL/221' MSL. Building 1.1 NM from DER, 1259' left of centerline, 300' AGL/310' MSL. Building 1.7 NM from DER, 1385' right of centerline, 255' AGL/265' MSL.

Rwy 24: Trees beginning 190' from DER, 304' right of centerline, up to 30' AGL/49' MSL. Trees beginning 423' from DER, 3' left of centerline, up to 47' AGL/66' MSL. Tanks, building, tree, and pole beginning 630' from DER, 23' right of centerline, 60' AGL/80' MSL. Trees beginning 2179' from DER, 253' left of centerline, up to 91' AGL/110' MSL.

Rwy 28: Trees beginning 358' from DER, 255' left of centerline, up to 25' AGL/44' MSL. Poles, building, trees, and tank beginning 722' from DER, 33' left and 238' right of centerline, up to 45' AGL/64' MSL.

Rwy 33: Buildings beginning 29' from DER, 398' left of centerline, 18' AGL/34' MSL. Trees beginning 629' from DER, 518' left of centerline, up to 59' AGL/77' MSL. Trees beginning 202' from DER, 548' right of centerline, up to 38' AGL/56' MSL.

SE-3, 12 OCT 2017 to 09 NOV 2017

SE-3, 12 OCT 2017 to 09 NOV 2017