

DEPARTURE ROUTE DESCRIPTION

TAKEOFF RUNWAYS 9L/R: Climb on heading 093° or as assigned for RADAR vectors to cross AGERS at 5000, thence. . . .

TAKEOFF RUNWAY 12: Climb on heading 128° or as assigned for RADAR vectors to cross AGERS at 5000, thence. . . .

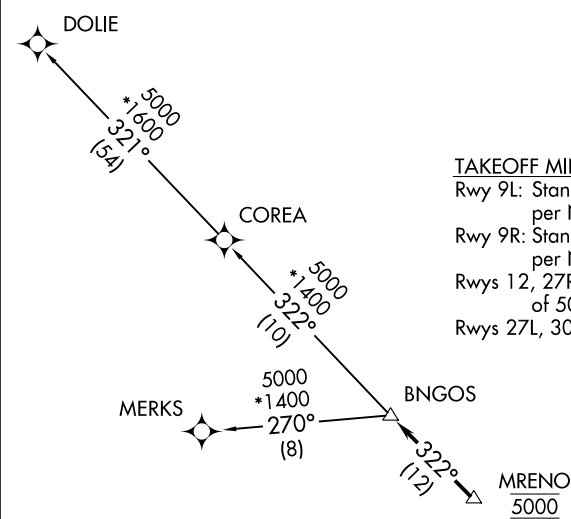
TAKEOFF RUNWAYS 27L/R: Climb on heading 273° or as assigned for RADAR vectors to cross AGERS at 5000, thence. . . .

TAKEOFF RUNWAY 30: Climb on heading 308° or as assigned for RADAR vectors to cross AGERS at 5000, thence. . . .

. . . . on track 360° to PERTS, then on track 357° to ALTNN, then on assigned transition, maintain ATC assigned altitude, expect filed altitude within 10 minutes after departure.

DUCEN TRANSITION (ALTNN1.DUCEN)

RNAV-1 DME/DME/IRU or GPS.	TOP ALTITUDE: ASSIGNED BY ATC	ATIS
RADAR required.		125.9 CLNC DEL 119.2 GND CON 120.025 OPA LOCKA TOWER ★ 134.675 (CTAF) MIAMI DEP CON 119.45 290.325



TAKEOFF MINIMUMS

Rwy 9L: Standard with minimum climb of 500' per NM to 1000.

Rwy 9R: Standard with minimum climb of 500' per NM to 700.

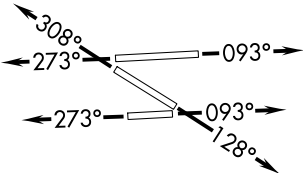
Rwys 12, 27R: Standard with minimum climb of 500' per NM to 600.

Rwys 27L, 30: Standard.

NOTE: Jet aircraft only.

NOTE: Accelerate to 250K, if unable, advise ATC.

NOTE: MERKS Transition ATC assigned only except aircraft landing: MKY, RSW, APF, PGD and FMY.



NOTE: Chart not to scale.

DEPARTURE ROUTE DESCRIPTION

TAKEOFF RUNWAYS 9L/R: Climb on heading 093° or as assigned for RADAR vectors to cross MRENO at 5000, thence. . .

TAKEOFF RUNWAY 12: Climb on heading 128° or as assigned for RADAR vectors to cross MRENO at 5000, thence. . .

TAKEOFF RUNWAYS 27L/R: Climb on heading 273° or as assigned for RADAR vectors to cross MRENO at 5000, thence. . .

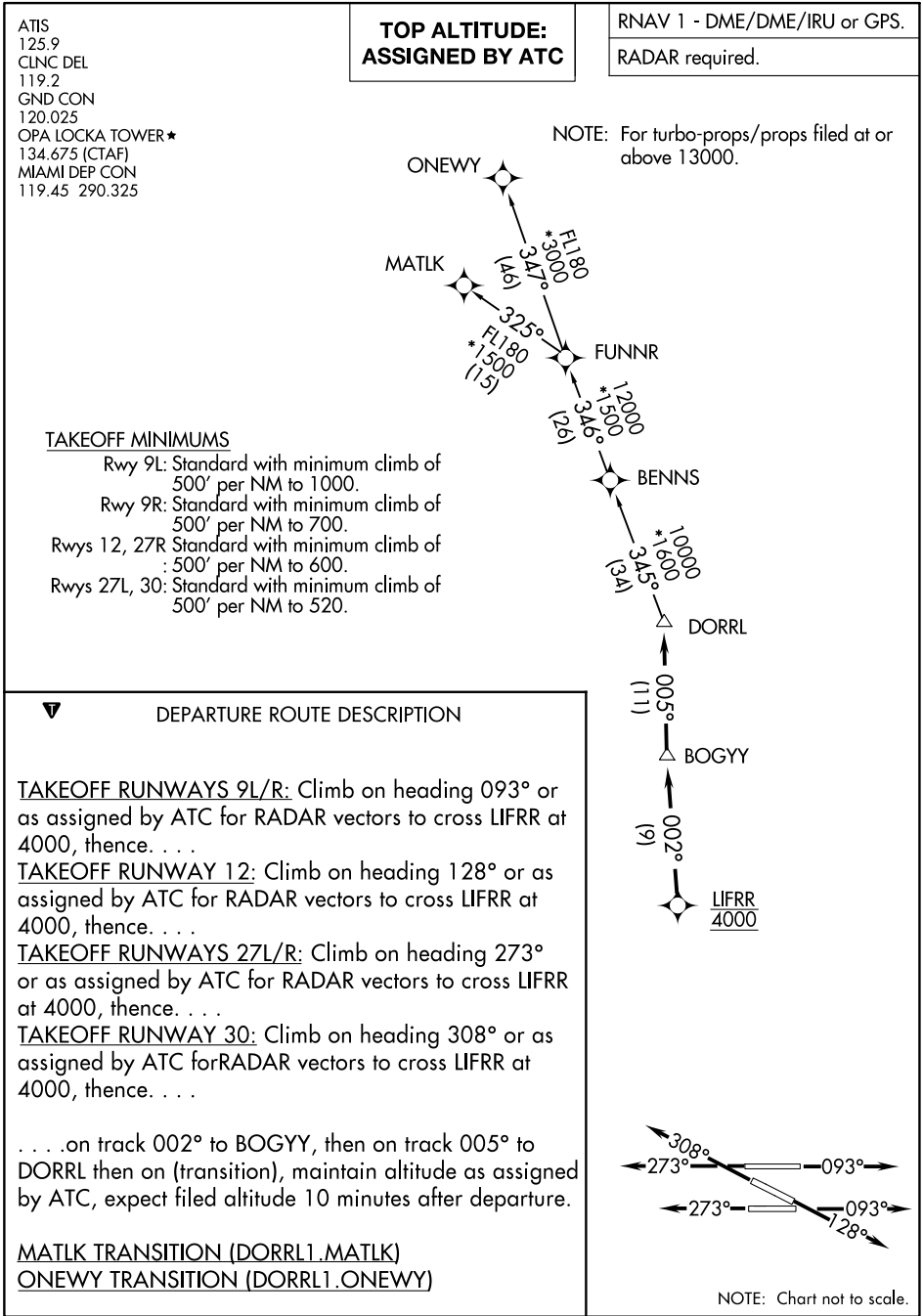
TAKEOFF RUNWAY 30: Climb on heading 308° or as assigned for RADAR vectors to cross MRENO at 5000, thence. . .

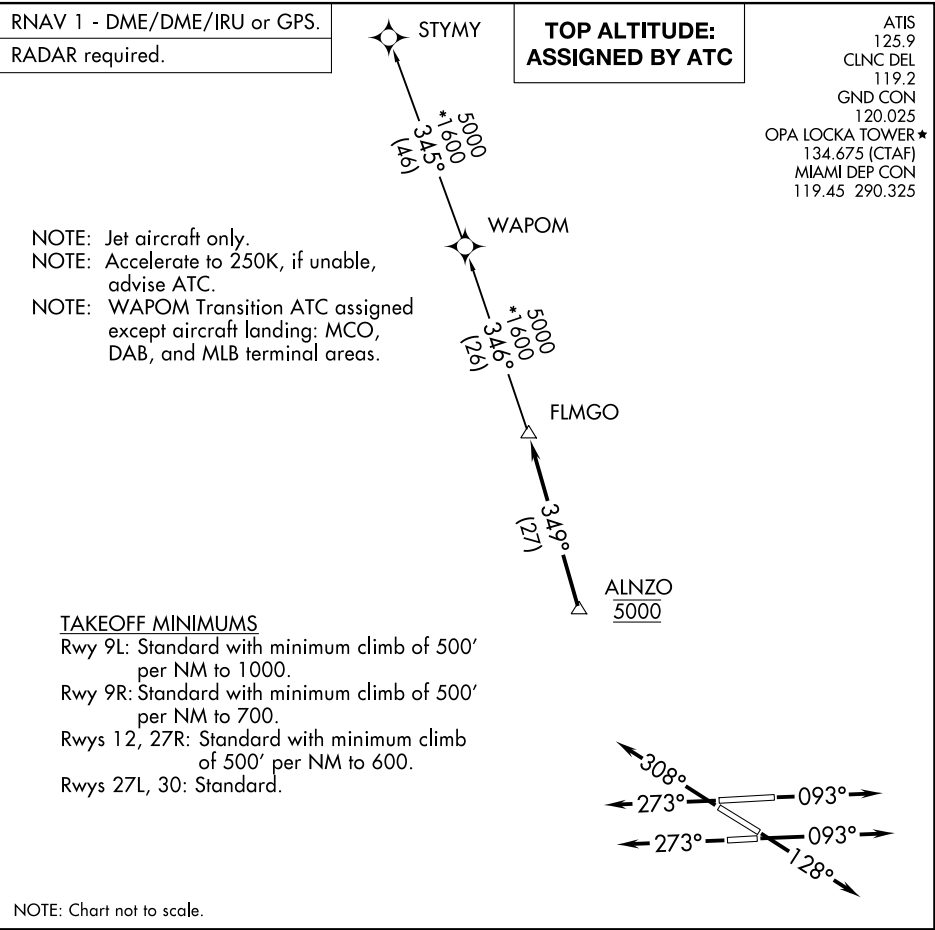
. . .on track 322° to BNGOS, then on transition, maintain ATC assigned altitude, expect clearance to filed altitude within 10 minutes after departure.

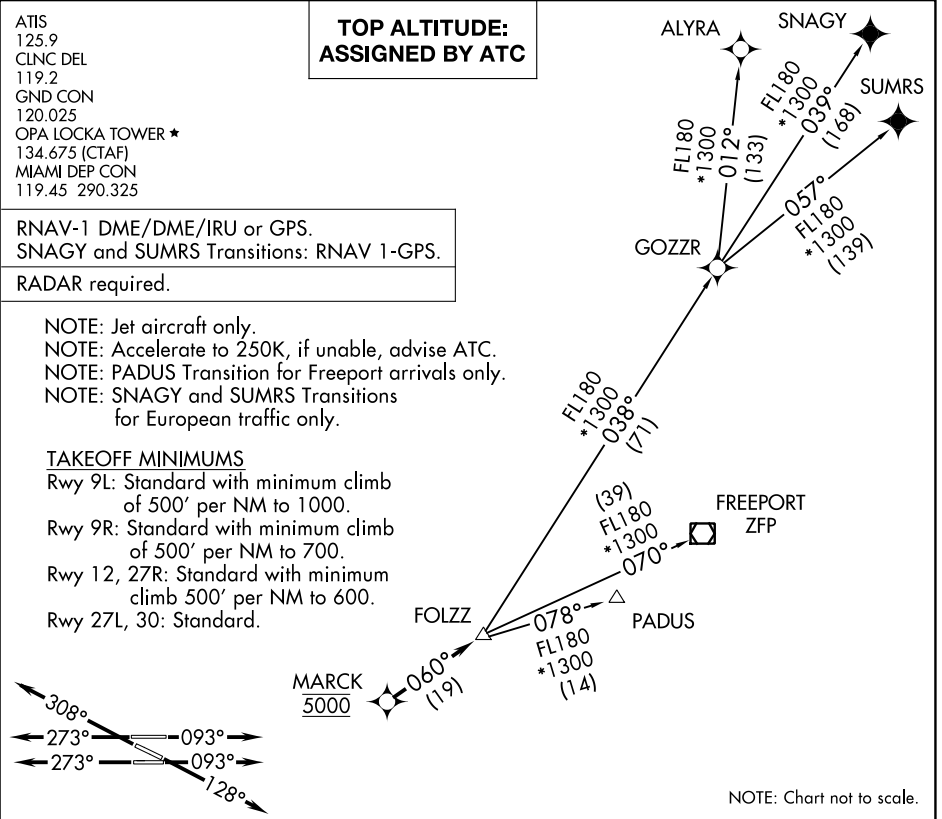
COREA TRANSITION (BNGOS3.COREA)
DOLIE TRANSITION (BNGOS3.DOLIE)
MERKS TRANSITION (BNGOS3.MERKS)

SE-3, 22 FEB 2024 to 21 MAR 2024

SE-3, 22 FEB 2024 to 21 MAR 2024







DEPARTURE ROUTE DESCRIPTION
TAKEOFF RUNWAYS 9L/R: Climb on heading 093° or as assigned for RADAR vectors to cross MARCK at 5000, thence. . .
TAKEOFF RUNWAY 12: Climb on heading 128° or as assigned for RADAR vectors to cross MARCK at 5000, thence. . .
TAKEOFF RUNWAYS 27L/R: Climb on heading 273° or as assigned for RADAR vectors to cross MARCK at 5000, thence. . .
TAKEOFF RUNWAY 30: Climb on heading 308° or as assigned for RADAR vectors to cross MARCK at 5000, thence. . .
. . .on track 060° to FOLZZ, then on transition. Maintain ATC assigned altitude, expect clearance to filed altitude within 10 minutes after departure.
ALYRA TRANSITION (FOLZZ2.ALYRA)
FREEPORT TRANSITION (FOLZZ2.ZFP)
GOZZR TRANSITION (FOLZZ2.GOZZR)
PADUS TRANSITION (FOLZZ2.PADUS)
SNAGY TRANSITION (FOLZZ2.SNAGY)
SUMRS TRANSITION (FOLZZ2.SUMRS)

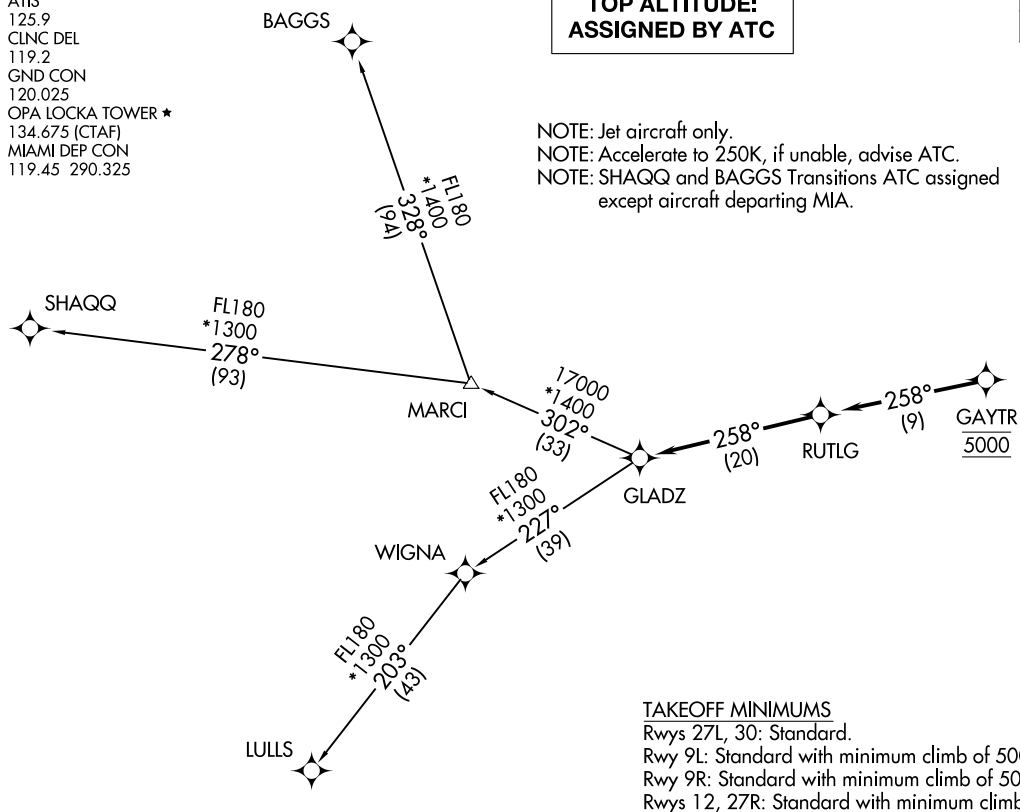
GLADZ TWO DEPARTURE (RNAV)
(GLADZ2.GLADZ) 19MAY22MIAMI, FLORIDA
MIAMI-OPA LOCKA EXEC (OPF)

ATIS
125.9
CLNC DEL
119.2
GND CON
120.025
OPA LOCKA TOWER ★
134.675 (CTAF)
MIAMI DEP CON
119.45 290.325

TOP ALTITUDE: ASSIGNED BY ATC

RNAV-1 DME/DME/IRU or GPS.
RADAR required.

NOTE: Jet aircraft only.
NOTE: Accelerate to 250K, if unable, advise ATC.
NOTE: SHAQQ and BAGGS Transitions ATC assigned
except aircraft departing MIA.



TAKEOFF MINIMUMS

Rwys 27L, 30: Standard.
Rwy 9L: Standard with minimum climb of 500' per NM to 1000.
Rwy 9R: Standard with minimum climb of 500' per NM to 700.
Rwys 12, 27R: Standard with minimum climb of 500' per NM to 600.

NOTE: Chart not to scale.

(NARRATIVE ON FOLLOWING PAGE)

(GLADZ2.GLADZ) 22139
GLADZ TWO DEPARTURE (RNAV)

AL-256 (FAA)

MIAMI-OPA LOCKA EXEC (OPF)
MIAMI, FLORIDA



DEPARTURE ROUTE DESCRIPTION

TAKEOFF RUNWAYS 9L/R: Climb on heading 093° or as assigned by ATC for RADAR vectors to cross GAYTR at 5000, thence. . .

TAKEOFF RUNWAY 12: Climb on heading 128° or as assigned by ATC for RADAR vectors to cross GAYTR at 5000, thence. . .

TAKEOFF RUNWAYS 27L/R: Climb on heading 273° or as assigned by ATC for RADAR vectors to cross GAYTR at 5000, thence. . .

TAKEOFF RUNWAY 30: Climb on heading 308° or as assigned by ATC for RADAR vectors to cross GAYTR at 5000, thence. . .

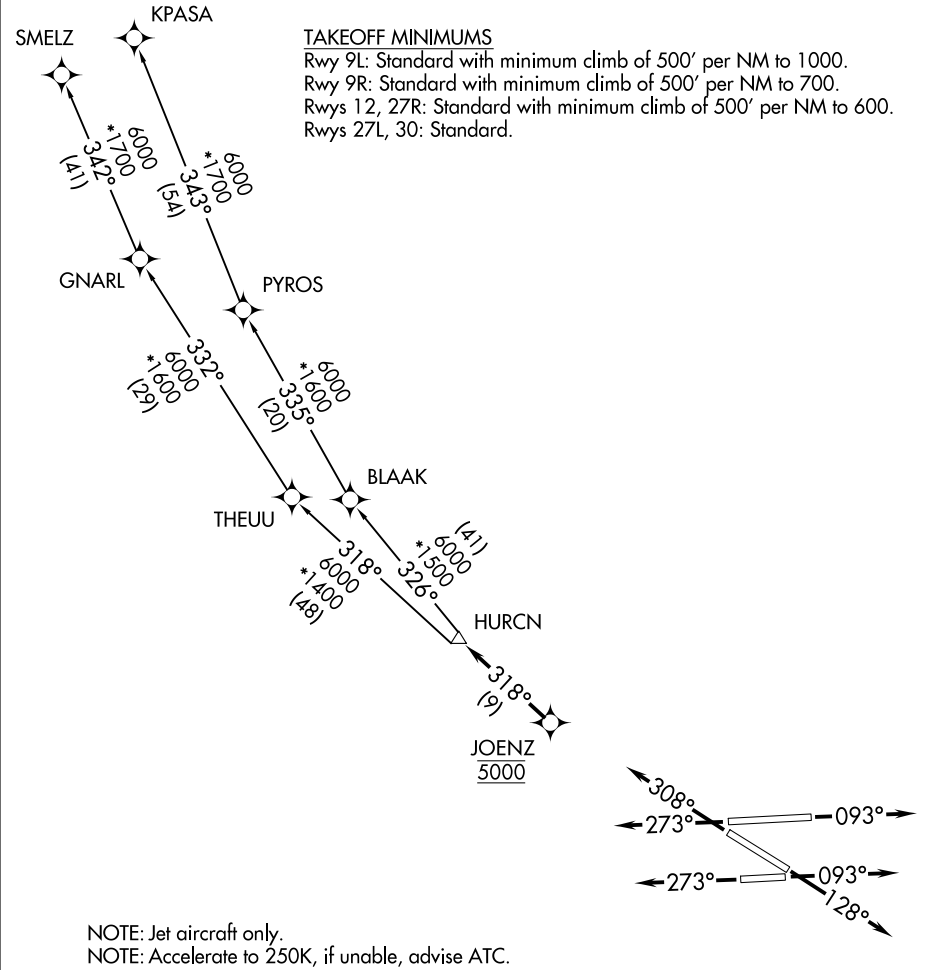
. . .on track 258° to RUTLG, then on track 258° to GLADZ, then on transition. Maintain ATC assigned altitude, expect clearance to filed altitude 10 minutes after departure.

BAGGS TRANSITION (GLADZ2.BAGGS)

LULLS TRANSITION (GLADZ2.LULLS)

SHAQQ TRANSITION (GLADZ2.SHAQQ)

RNAV-1 DME/DME/IRU or GPS.	TOP ALTITUDE: ASSIGNED BY ATC	ATIS 125.9 CLNC DEL 119.2 GND CON 120.025
RADAR required.		OPA LOCKA TOWER ★ 134.675 (CTAF) MIAMI DEP CON 119.45 290.325



NOTE: Chart not to scale.

(NARRATIVE ON FOLLOWING PAGE)

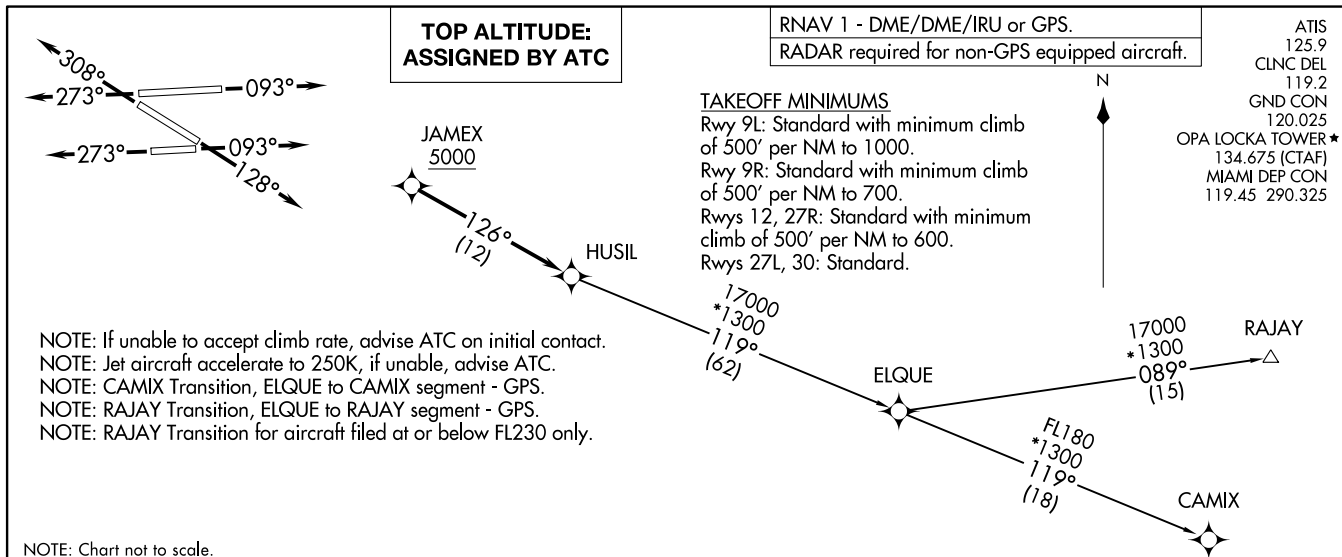
DEPARTURE ROUTE DESCRIPTION		
<div><div>▼</div><div><div><div><div><div>TAKEOFF RUNWAYS 9L/R:</div><div>Climb on heading 093° or as assigned for RADAR vectors to cross JOENZ at 5000, thence. . .</div></div><div><div>TAKEOFF RUNWAY 12:</div><div>Climb on heading 128° or as assigned for RADAR vectors to cross JOENZ at 5000, thence. . .</div></div><div><div>TAKEOFF RUNWAYS 27L/R:</div><div>Climb on heading 273° or as assigned for RADAR vectors to cross JOENZ at 5000, thence. . .</div></div><div><div>TAKEOFF RUNWAY 30:</div><div>Climb on heading 308° or as assigned for RADAR vectors to cross JOENZ at 5000, thence. . .</div></div></div><div><div>. . .on track 318° to HURCN, then on transition. Maintain ATC assigned altitude, expect clearance to filed altitude within 10 minutes after departure.</div></div><div><div>KPASA TRANSITION (HURCN3.KPASA)</div><div>SMELZ TRANSITION (HURCN3.SMELZ)</div></div></div></div></div>		

SE-3, 22 FEB 2024 to 21 MAR 2024

SE-3, 22 FEB 2024 to 21 MAR 2024

HUSIL THREE DEPARTURE (RNAV)
(HUSIL3:HUSIL) 19MAR22

MIAMI-OPA LOCKA EXEC (OPF)
MIAMI, FLORIDA



(HUSIL3:HUSIL) 22139
HUSIL THREE DEPARTURE (RNAV)
AL-256 (FAA)

MIAMI-OPA LOCKA EXEC (OPF)
MIAMI, FLORIDA

DEPARTURE ROUTE DESCRIPTION

TAKEOFF RUNWAYS 9L/R: Climb on heading 093° or as assigned by ATC for RADAR vectors to cross JAMEX at or above 5000, thence. . .

TAKEOFF RUNWAY 12: Climb on heading 128° or as assigned by ATC for RADAR vectors to cross JAMEX at or above 5000, thence. . .

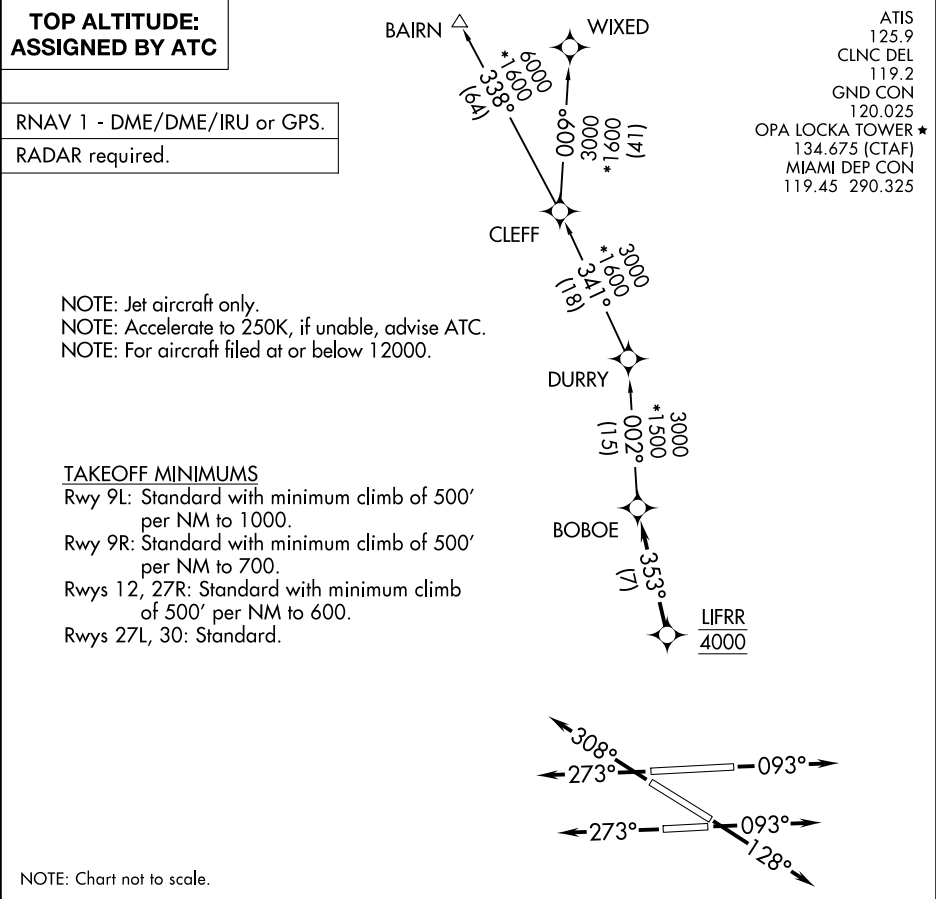
TAKEOFF RUNWAYS 27L/R: Climb on heading 273° or as assigned by ATC for RADAR vectors to cross JAMEX at or above 5000, thence. . .

TAKEOFF RUNWAY 30: Climb on heading 308° or as assigned by ATC for RADAR vectors to cross JAMEX at or above 5000, thence. . .

. . . on track 126° to HUSIL. Then on assigned transition. Maintain ATC assigned altitude, expect clearance to filed altitude within 10 minutes after departure.

CAMIX TRANSITION (HUSIL3.CAMIX)

RAJAY TRANSITION (HUSIL3.RAJAY)



MAYNR ONE DEPARTURE (RNAV)
(MAYNR1, MAYNR) 19MAY22

MIAMI-OPA LOCKA EXEC (OPF)
MIAMI, FLORIDA

ATIS
125.9
CLNC DEL
119.2
GND CON
120.025
OPA LOCKA TOWER ★
134.675 (CTAF)
MIAMI DEP CON
119.45 290.325

RNAV1 - DME/DME/IRU or GPS.
From SLIPT to MAXIM: RNAV 1 - GPS.
From SLIPT to CANOA: RNAV 1 - GPS.
RADAR required.

**TOP ALTITUDE:
ASSIGNED BY ATC**



TAKEOFF MINIMUMS

Rwy 9L: Standard with minimum climb of 500' per NM to 1000.

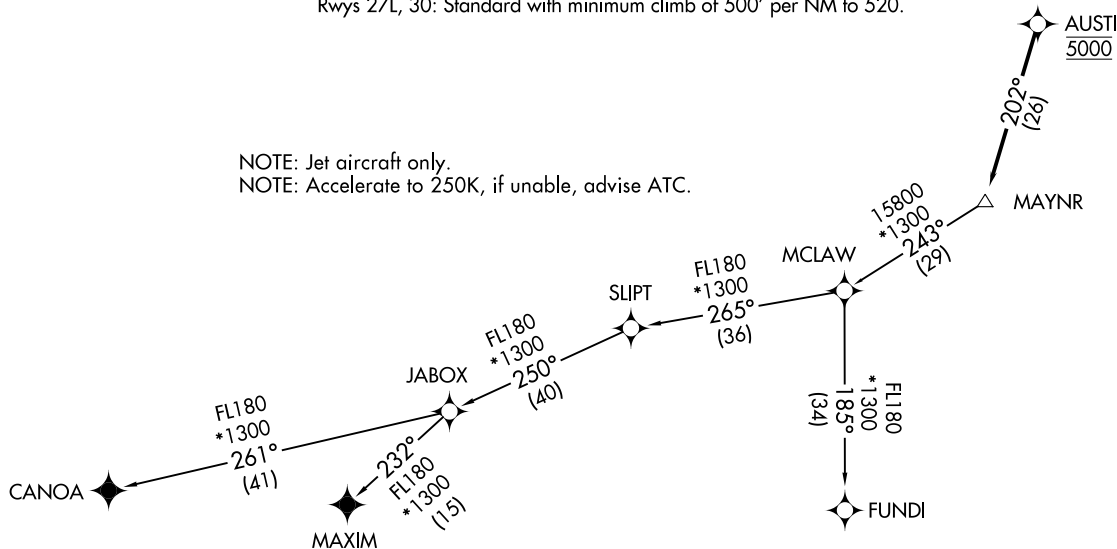
Rwy 9R: Standard with minimum climb of 500' per NM to 700.

Rwys 12, 27R: Standard with minimum climb of 500' per NM to 600.

Rwys 27L, 30: Standard with minimum climb of 500' per NM to 520.

NOTE: Jet aircraft only.

NOTE: Accelerate to 250K, if unable, advise ATC.



NOTE: Chart not to scale.

(NARRATIVE ON FOLLOWING PAGE)

(MAYNR1, MAYNR) 22139
MAYNR ONE DEPARTURE (RNAV)

AL-256 (FAA)

MIAMI-OPA LOCKA EXEC (OPF)
MIAMI, FLORIDA



DEPARTURE ROUTE DESCRIPTION

TAKEOFF RUNWAYS 9L/9R, 12, 27L/R, 30: Climb on heading assigned by ATC for vectors to cross AUSTI at 5000, thence. . . .

. . . .on track 202° to MAYNR, then on assigned transition, maintain altitude as assigned by ATC, expect clearance to filed altitude within 10 minutes after departure.

CANOA TRANSITION (MAYNR1.CANOA)

FUNDI TRANSITION (MAYNR1.FUNDI)

MAXIM TRANSITION (MAYNR1.MAXIM)

SE-3, 22 FEB 2024 to 21 MAR 2024

SE-3, 22 FEB 2024 to 21 MAR 2024

MIAMI NINE DEPARTURE
(MIA9.MIA) 19MAY22

(MIA9.MIA) 23110
MIAMI NINE DEPARTURE

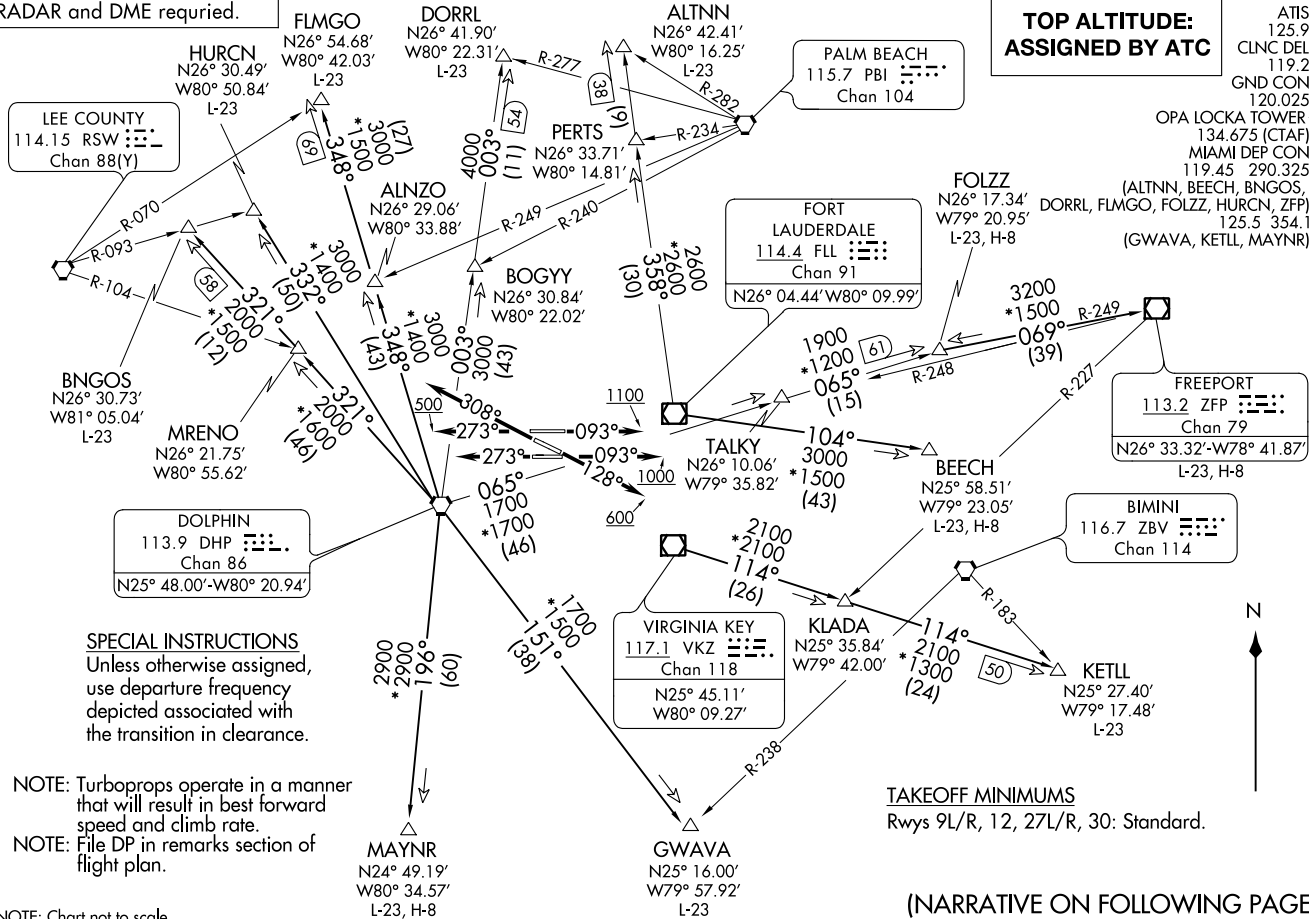
AL-256 (FAA)

MIAMI-OPA LOCKA EXEC (OPT)
MIAMI, FLORIDA

RADAR and DME required.

**TOP ALTITUDE:
ASSIGNED BY ATC**

ATIS 125.9
CLNC DEL 119.2
GND CON 120.025
OPA LOCKA TOWER* 134.675 (CTAF)
MIAMI DEP CON 119.45 290.325
(ALTNN, BEECH, BNGOS, DORRL, FLMGO, FOLZZ, HURCN, ZFP) 125.5 354.1
(GWAVA, KETLL, MAYNR)



NOTE: Chart not to scale.



DEPARTURE ROUTE DESCRIPTION

- TAKEOFF RUNWAY 9L:

Climb on heading 093° to 1100 before turning north, thence...
- TAKEOFF RUNWAY 9R:

Climb on heading 093° to 1000 before turning north, thence...
- TAKEOFF RUNWAY 12:

Climb on heading 128° to 600 before turning north, thence...
- TAKEOFF RUNWAY 27L:

Climb on heading 273° thence...
- TAKEOFF RUNWAY 27R:

Climb on heading 273° to 500 before turning north, thence...
- TAKEOFF RUNWAY 30:

Climb on heading 308° thence...

... maintain 2000 or assigned higher altitude for RADAR vectors to appropriate transition.
Expect further clearance to filed altitude ten (10) minutes after departure.

- ALTNN TRANSITION (MIA9.ALTNN):

From over FLL VOR/DME on FLL R-358 to ALTNN.
- BEECH TRANSITION (MIA9.BEECH):

From over FLL VOR/DME on FLL R-104 to BEECH.
- BNGOS TRANSITION (MIA9.BNGOS):

From over DHP VORTAC on DHP R-321 to BNGOS.
- DORRL TRANSITION (MIA9.DORRL):

From over DHP VORTAC on DHP R-003 to DORRL.
- FLMGO TRANSITION (MIA9.FLMGO):

From over DHP VORTAC on DHP R-348 to FLMGO.
- FOLZZ TRANSITION (MIA9.FOLZZ):

From over DHP VORTAC on DHP R-065 to FOLZZ.
- FREEPORT TRANSITION (MIA9.ZFP):

From over DHP VORTAC on DHP R-065 to FOLZZ then on ZFP R-249 to ZFP VOR/DME.
- GWAVA TRANSITION (MIA9.GWAVA):

From over DHP VORTAC on DHP R-151 to GWAVA.
- HURCN TRANSITION (MIA9.HURCN):

From over DHP VORTAC on DHP R-332 to HURCN.
- KETLL TRANSITION (MIA9.KETLL):

From over VKZ VOR/DME on VKZ R-114 to KETLL.
- MAYNR TRANSITION (MIA9.MAYNR):

From over DHP VORTAC on DHP R-196 to MAYNR.